



EPA - HAB Presentation

From: EPA - Hanford Project
Office

To: Hanford Advisory Board

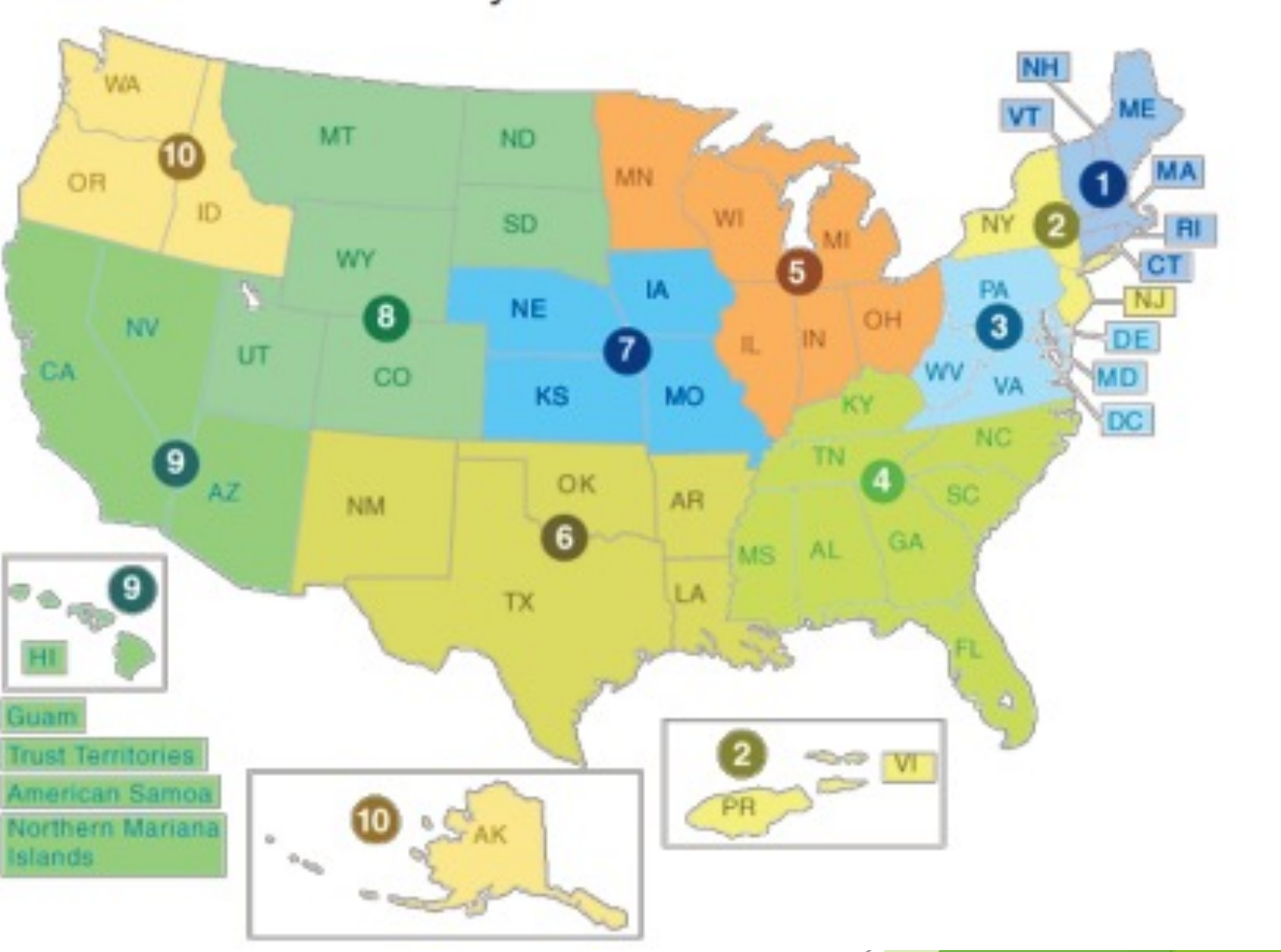
November 2024

General EPA Background

- ▶ EPA's primary mission is to protect human health & the environment.
- ▶ To support this mission, EPA works in the following policies and programs:
 - ▶ Comprehensive Environmental Response, Compensation, & Liability Act (CERCLA, enacted 1980)
 - ▶ Resource Conservation & Recovery Act (RCRA, enacted 1976)
 - ▶ Brownfields Program
 - ▶ Climate Change
 - ▶ Environmental Justice
 - ▶ Air
 - ▶ Water
 - ▶ Lead
 - ▶ Emergency Response & more



EPA Nationwide



- ▶ Headquarters based in Washington, D.C.
- ▶ Divided into 10 regions nationwide
- ▶ We are located within Region 10 (Pacific Northwest)

EPA Region 10 (Pacific Northwest)

Serving Alaska, Idaho, Oregon, Washington, and 271 Tribal Nations



Sawtooth Mountains near Stanley, Idaho.

- ▶ Region 10 is headquartered in Seattle, WA
- ▶ Superfund & Emergency Management Division (SEMD)
 - ▶ Remedial Cleanup Branch (RCB)
 - ▶ 5 Superfund Cleanup Sections (SCS)
 - ▶ SCS4 is Federal Facility only



Laura
Buelow



David Einan



Roberto Armijo



Geoff Schramm



Anne McCartney



Cascade
Galasso-Irish

EPA - Hanford Project Office

- ▶ Superfund Cleanup Section 4 (SCS4)
 - ▶ Supervisor - Laura Buelow, PhD. (overseeing 13 remedial project managers)
 - ▶ Hanford Project Office
 - ▶ Michelle Mullin, Sr. RCRA Policy Advisor
 - ▶ Jim McAuley, Air & Radiation Division
 - ▶ Nick Vidargas, Legal Counsel

EPA & CERCLA

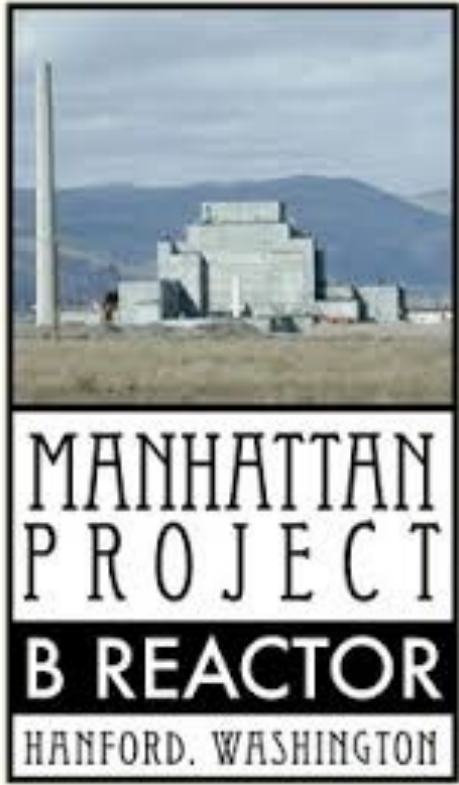
- ▶ Superfund is the common name for CERCLA (enacted 1980)
 - ▶ Implemented via the National Contingency Plan (NCP)
- ▶ Established the Hazardous Substance Trust Fund - Superfund Tax
 - ▶ Reinstated on July 1, 2022 through Dec. 31, 2031
- ▶ Addresses cleanup of sites contaminated with uncontrolled hazardous substances, providing legal authority to respond to a release or threat of release to the environment.
 - ▶ Time-critical / Non-time critical removal action
 - ▶ Remedial action
 - ▶ Enforcement action
- ▶ Polluter pays

EPA & CERCLA, cont.

- ▶ 3 types of superfund sites
 - ▶ Private sites
 - ▶ Potentially-responsible party (PRP) is legally and financially liable for conducting remedial cleanup
 - ▶ Fund-lead
 - ▶ Remedial cleanup is funded by the federal government (by Superfund Tax) when no party is held liable or a party cannot afford it
 - ▶ Federal Facility sites
 - ▶ A federal agency (e.g. DOE, DOD, etc.) is the PRP and is legally and financially liable for conducting remedial cleanup
 - ▶ Hanford is a federal facility Superfund site with DOE as the PRP



EPA Priorities



- ▶ Ensuring protection and completion of cleanup along the River Corridor
- ▶ Continuing groundwater restoration across Hanford
- ▶ Continuing progress with characterization and cleanup of sites in the Central Plateau
- ▶ Implementing current TPA schedules and milestones for cleanup
- ▶ Ensuring appropriate levels of public involvement in Hanford decision-making, information sharing, and overall awareness of site activities
- ▶ Supporting national EPA efforts on climate change and environmental justice

EPA Priorities, cont.

- ▶ 100-K
 - ▶ Grouting completed at 105-KW Fuel Storage Basin
 - ▶ 130-KE-2 waste site remediation, continuing in January 2025
 - ▶ Proposed Plan under review
- ▶ 100-N
 - ▶ Proposed Plan under review



East Bay Water Removal as of July 11, 2024



130-KE-2 Loadout of Contaminated soil to ERDF (February 2024)



117KW Filter Removal



117KW Demolition

EPA Priorities, cont.

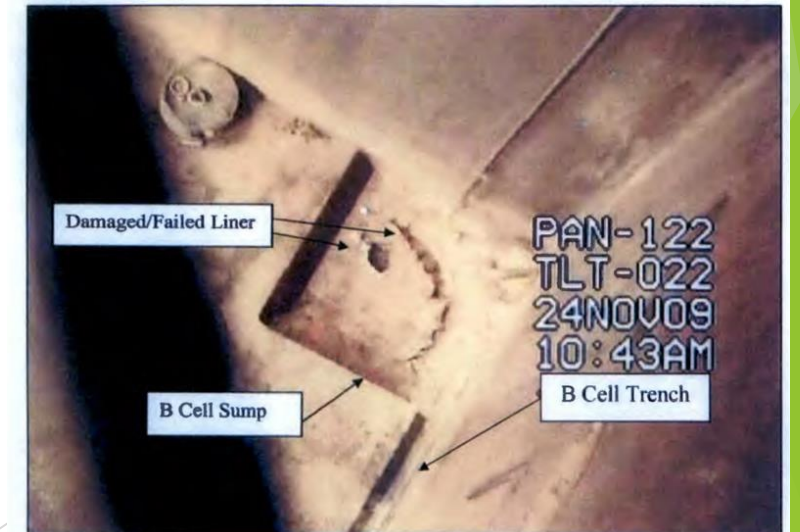
- ▶ 300 Area:
 - ▶ Focus on development of a Focused Feasibility Study (FFS) and working towards a ROD amendment for remediating the spilled principal threat waste beneath 324 Building B-Cell
 - ▶ Builds on previous remedial design efforts and information gathered over the last decade



Introduction

DOE/RL-2011-51
Rev. 0

Figure 1-1. Photograph of Failed Liner (Taken from Within B-Cell).



EPA Priorities, cont.

- ▶ 300 Area

- ▶ 618-11: Design for remediation is expected over the next 5 years

618-10 Burial Ground, Hanford Site

Non-Intrusive Characterization



618-10 Burial Ground, Hanford Site

Augering – Operations



Vertical Pipe Unit Remediation

CHPRC-03343, REV. 0

CHPRC-03343, REV. 0

EPA Priorities, cont.

▶ Central Plateau

- ▶ ERDF: Design on Supercell 11
- ▶ 200 Area: Pump & Treat operation has reached goal of pumping 3,500 gallons per minute
- ▶ Continued characterization and cleanup of soil waste sites (e.g. 200-WA-1, 200-BC-1 and 200-IA-1)



EPA Priorities, cont.

▶ Public Involvement

- ▶ Hanford Advisory Board: EPA Agency liaison and collaboration on HAB policy-level matters
- ▶ Public Outreach: Agency liaison and collaboration on developing outreach materials
- ▶ Stakeholder Engagement: Meet with various stakeholders, Tribal Nations, and interested parties on Hanford engagement and technical discussions



Questions?

Please reach out and visit! Thank you!



Hanford Project Office

- ▶ 825 Jadwin Avenue, Ste 210
Richland, WA 99352