



THE HANFORD SITE

Richland Operations Office Update

Doug Shoop, Manager
Hanford Advisory Board

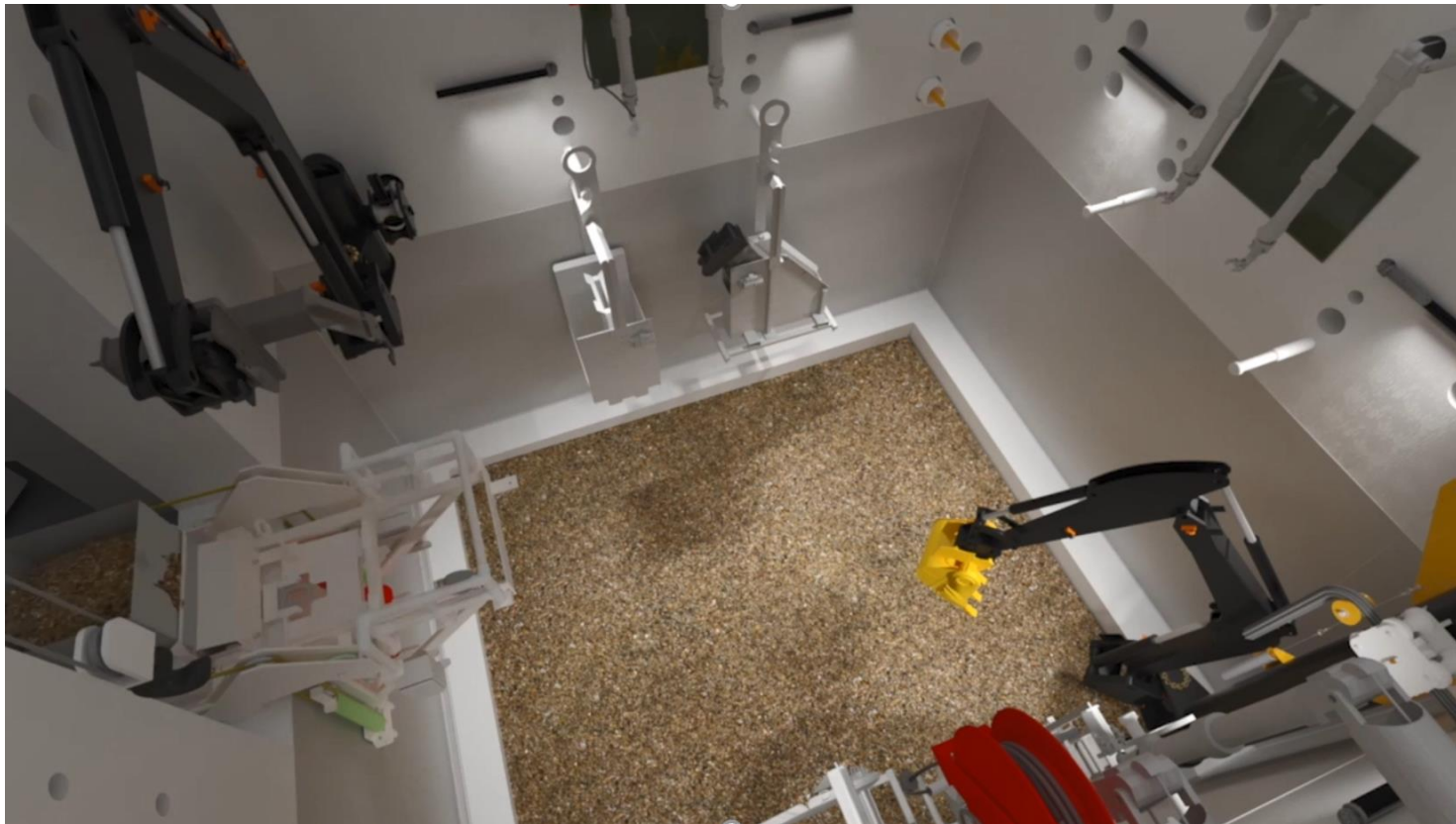
September 19, 2018



U.S. DEPARTMENT OF ENERGY

324 Building Video

<https://www.youtube.com/watch?v=pkMMr5pp41o>

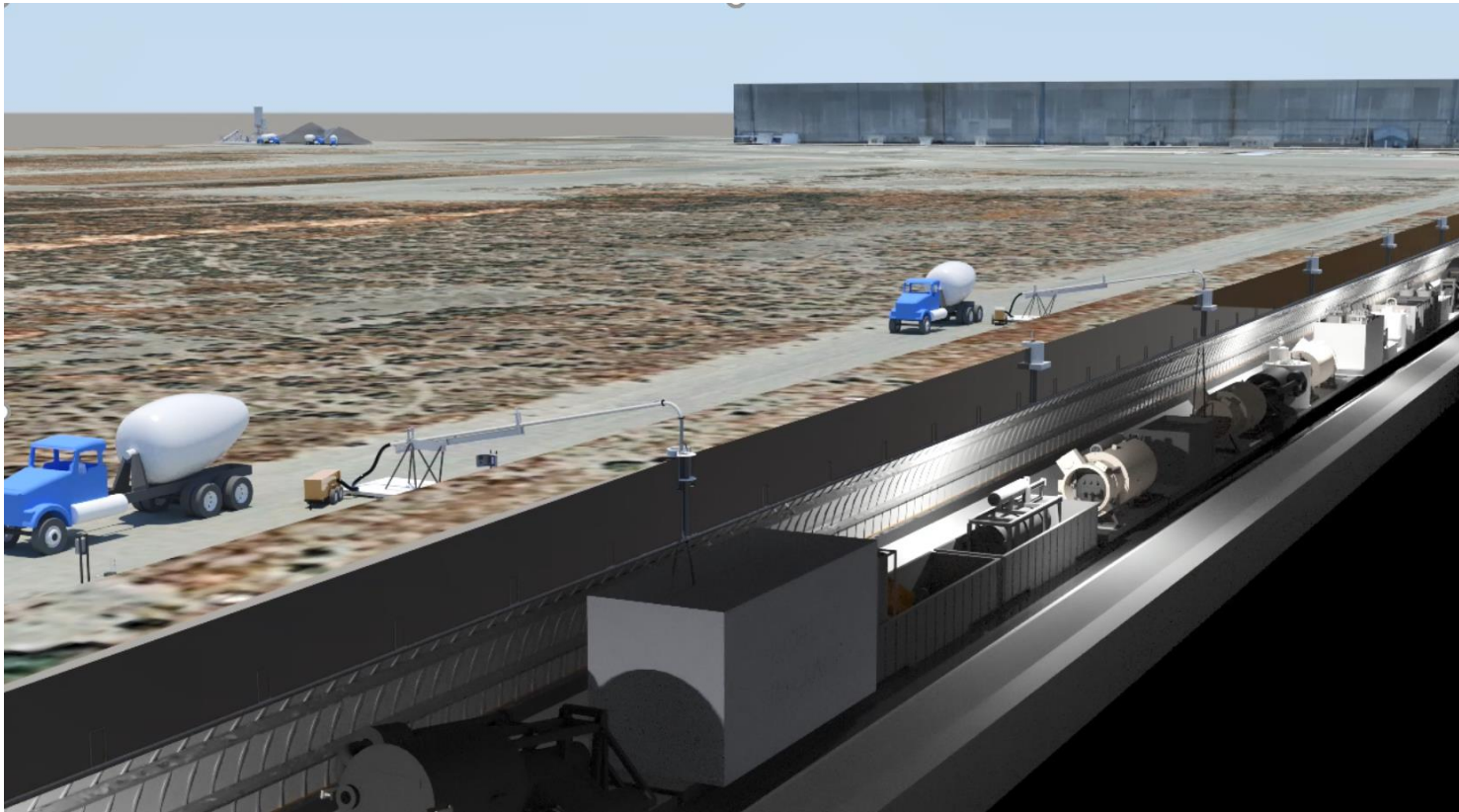


U.S. DEPARTMENT OF ENERGY

THE HANFORD SITE

PUREX Tunnel 2 Video

<https://www.youtube.com/watch?v=6gDApNmQJ2A>

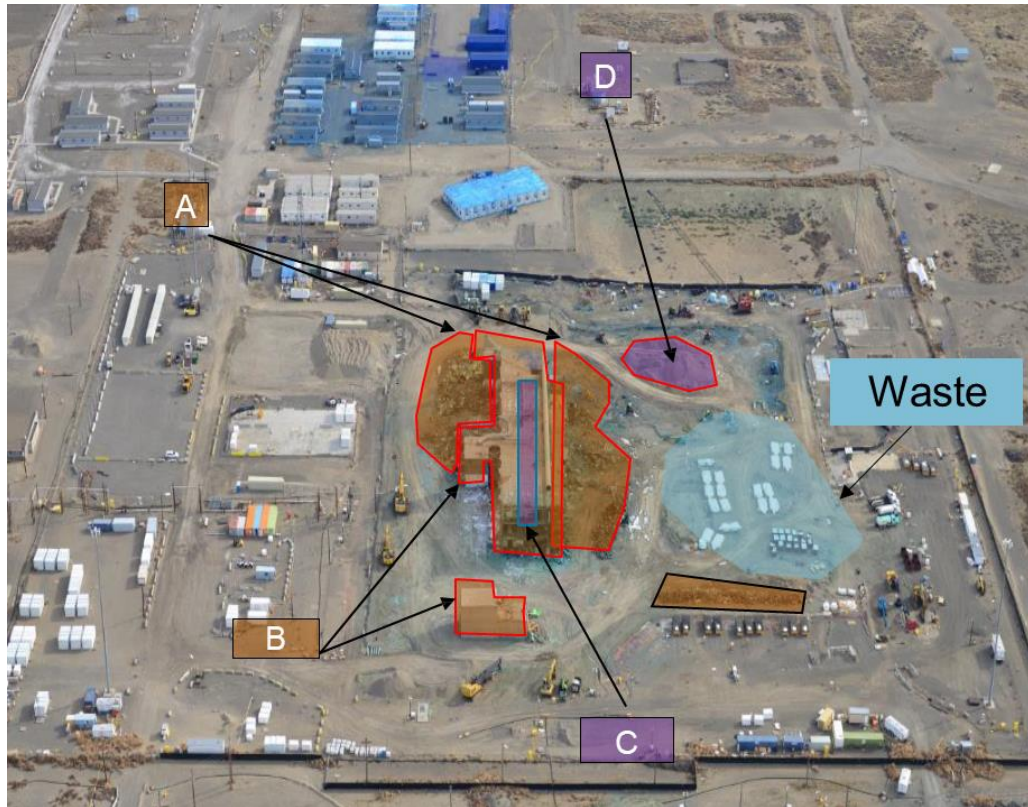


U.S. DEPARTMENT OF ENERGY

THE HANFORD SITE

Plutonium Finishing Plant

Lower- and Higher-Risk Approaches



Risk based on material-at-risk (MAR) and surface contamination configuration

Containerized Waste		
Super Sacks	60%	1835g
Other	30%	912g
Subtotal	90%	2747g

Lower-Risk Demolition		
A: 234-5Z Debris	<1%	5g
B: 234-5Z and Vault	<1%	5g

Higher-Risk Demolition		
C: 234-5Z A/C Lines and Tunnel	2%	64g
D: PRF Rubble Pile	8%	238g
Subtotal	10%	312g

Remaining MAR 3059g

234-5Z=Main PFP Processing Facility
PRF=Plutonium Reclamation Facility

