



OFFICE OF
RIVER PROTECTION
United States Department of Energy

Proposed Permit Modification for Effluent Management Facility Ancillary Equipment Installation

Joe Sondag, Environmental Compliance Division

Presented by: U.S. Department of Energy – Office of River Protection

December 7, 2017



Hanford Historical Overview



1940s-1980s: Construction & Plutonium Production



1940s-1980s: Creation of Tank Waste

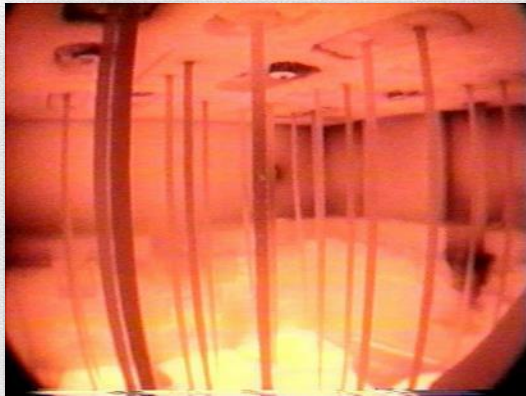


Present: Waste Treatment Plant Construction



Present: Stabilization & Safe Storage





Molten glass and waste in a melter



Simulated vitrified waste



High-level waste (tall) canister and
low-activity waste container



Simulated vitrified waste
in a canister







EMF provides four key services to support Direct Feed Low-Activity Waste (DFLAW) initiative

- Provides low-point drain for waste transfer line flushing
- Concentrates low-activity radioactive effluents from the Low-Activity Waste (LAW) off-gas treatment system using an evaporator
- Transfers evaporator condensate to the Effluent Treatment Facility (outside of the WTP project) via underground waste transfer lines
- Recycles evaporator concentrate back into the LAW vitrification process





- A permit issued under the Resource Conservation and Recovery Act (RCRA) provides the regulatory framework for management of hazardous waste at Hanford.
- Washington Department of Ecology is the regulatory authority for the hazardous waste permit, which includes WTP.

- ❖ **State regulations require the WTP permit to be modified to install new ancillary equipment to support planned operations of the WTP. This is a Class 2 Permit Modification. (WAC-173-303-830, Appendix I).**





- This proposed modification request seeks approval to install new ancillary equipment (non-critical piping and in line components) to support WTP operations.
- Conditions for installation of similar lines already exist in the WTP permit.
- The permit modification includes documents that provide an engineering design basis for installation of the new ancillary equipment including:
 - Piping and Instrumentation Diagrams
 - General Arrangement Drawings
 - Independent, Qualified, Registered Professional Engineer (IQRPE) reports.





How to provide comments

- Submit written comments at tonight's meeting (forms available)
- Submit comments to Ecology electronically by **Jan. 5, 2018**:
<http://wt.ecology.commentinput.com/?id=mhYkP>
- Mail comments to:
Dan McDonald
Washington Department of Ecology
3100 Port of Benton Boulevard
Richland, WA 99354
- Following the close of the 60-day comment period, Ecology will address public comments, issue its decision on the modification, and provide a 30-day appeal period (schedule TBD).

For more information, visit:

www.hanford.gov/pageaction.cfm/calendar?IndEventId=8533





Questions?

The Hanford Reach
White Bluffs Overlooking the Columbia River

