

ITEM 1



Department of Energy
Richland Operations Office
P.O. Box 550
Richland, Washington 99352

15-PRO-0175

APR 30 2015

Mr. J. A. Ciucci, President
and Chief Executive Officer
CH2M HILL Plateau Remediation Company
Richland, Washington 99352

Dear Mr. Ciucci:

**CONTRACT NO. DE-AC06-08RL14788 – FISCAL YEAR (FY) 2014 FINAL FEE
DETERMINATION FOR PLATEAU REMEDIATION CONTRACT**

The purpose of this letter is to provide the final fee determination for the FY 2014 evaluation period. Pursuant to the requirements of the contract, Section B, Clause B.8(d), the U.S. Department of Energy Richland Operations Office (RL) hereby awards a final fee of \$9,659,555 for FY 2014. The fee determination is based on CH2M HILL Plateau Remediation Company (CHPRC) performance measured against the Contract, Section J, Attachment J.4 "Performance Evaluation Measurement Plan." CHPRC drew down provisional fee of \$6,653,336 during the evaluation period. In accordance with the final fee determination above, CHPRC is hereby authorized to draw down an additional \$3,006,219 from the Special Financial Institution Account in order to close out the FY 2014 final fee earnings.

If you have any questions, please contact us, or your staff may contact Ray Corey, Assistant Manager for the River and Plateau, on (509) 373-9971.

A handwritten signature in black ink, reading "Stacy Charboneau".

Stacy Charboneau
Manager

A handwritten signature in black ink, reading "Jewel J. Short".

Jewel J. Short
Contracting Officer

PRO:JJS

Attachment

cc w/attach:
V. M. Bogenberger, CHPRC
K. K. Dickerson, CHPRC
W. E. Kirby, CHPRC
D. S. Merry, CHPRC
R. M. Millikin, CHPRC

Richland Operations Office's Fiscal Year 2014 Fee Evaluation Summary

Contractor: CH2M HILL Plateau Remediation Company (CHPRC)

Contract: Plateau Remediation Contract **Contract Number:** DE-AC06-08RL14788

Award Period: October 2013 through September 2014 (fiscal year 2014)

Basis of Evaluation: Performance Evaluation and Measurement Plan (PEMP)

Award Fee Available: \$9,815,000

Award Fee Earned: \$9,659,555

Award Fee Area Adjectival Ratings: Excellent (Earnings represent 98 percent of available fee)

Significant Achievements:

CHPRC has performed excellently in the area of small business subcontracting. CHPRC has awarded more than \$2 billion in contracts to small businesses since 2008. No enforceable Tri-Party Agreement milestones were missed during the period. Injury rates for CHPRC employees were much lower than goals for Department of Energy Environmental Management sites. CHPRC accomplished a number of the Department of Energy's Key Performance Goals for Hanford Site cleanup. The contractor was very responsive to customer needs, especially during the potential Government shutdown scenarios.

Significant Deficiencies:

DOE did not award any additional provisional payment of fee to CHPRC for the Plutonium Finishing Plant project. The final evaluation of fee for the Plutonium Finishing Plant project will be conducted upon completion of demolition of the plant, consistent with the Performance Evaluation and Measurement Plan.



Department of Energy
Richland Operations Office
P.O. Box 550
Richland, Washington 99352

15-PRO-0002

NOV 20 2014

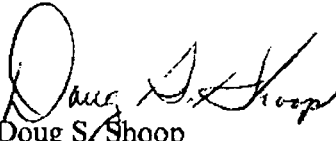
Mr. J. A. Ciucci, President
and Chief Executive Officer
CH2M HILL Plateau Remediation Company
Richland, Washington 99352


Dear Mr. Ciucci:

CONTRACT NO. DE-AC06-08RL14788 – FISCAL YEAR (FY) 2013 FINAL FEE
DETERMINATION

The purpose of this letter is to provide the final fee determination for the FY 2013 evaluation period. Pursuant to the requirements of the contract, Section B, Clause B.8 (d), the U.S. Department of Energy Richland Operations Office (RL) hereby awards a final fee of \$4,910,099.00 for FY 2013. The fee determination is based on CH2M HILL Plateau Remediation Company (CHPRC) performance and measured against the Contract, Section J, Attachment J.4, "Performance Evaluation and Measurement Plan." CHPRC drew down provisional fee of \$2,268,167.00 during the evaluation period. In accordance with the final fee determination above, CHPRC is hereby authorized to draw down an additional \$2,641,932.00 from the Special Financial Institution Account.

If you have any questions, please contact us, or your staff may contact Ray Corey, Assistant Manager for the River and Plateau, on (509) 373-9971.


Doug S. Shoop
Acting Manager


Jewel J. Short
Contracting Officer

PRO:JJS

cc: V. M. Bogenberger, CHPRC
S. W. Bork, CHPRC
R. K. Corman, CHPRC
W. E. Kirby, CHPRC
D. S. Merry, CHPRC
R. M. Millikin, CHPRC



Department of Energy
Richland Operations Office
P.O. Box 550
Richland, Washington 99352

11-PRO-0300

JUN 21 2011

Mr. J. G. Lehew III, President
and Chief Executive Officer
CH2M HILL Plateau Remediation Company
Richland, Washington 99352

Dear Mr. Lehew:

**CONTRACT NO. DE-AC06-08RL14788 – FISCAL YEAR (FY) 2009 FEE
DETERMINATION AND PAYMENT**

In response to CHPRC letter CHPRC-0900657, "Contract Number DE-AC06-08RL14788 – Request for Final Fee Determination," dated October 26, 2009, and pursuant to the requirements of Paragraph (d) of Clause B.8, "Fee Determination and Payment," the U.S. Department of Energy Richland Operations Office (RL) provides the following determination for FY 2009 against the Performance Measures (PM) contained in the Performance Evaluation and Measurement Plan, Section J, Attachment J.4.

FY 2009	Base Funded Fee	Recovery Funded Fee
Available Fee	\$24,155,098.66	\$5,372,225.01
Available Fee allocated to Performance Measures	\$19,355,909.86	3,771,414.00
Incremental Fee	\$12,465,767.46	3,771,414.00
Provisional Fee	\$6,890,142.40	\$0
Available Fee not allocated to Performance Measures and Objectives	\$4,799,188.80	\$1,600,811.01

Per the table above, and as detailed in the enclosed fee reconciliation table, FY 2009 Available Fee allocated to PMs has been earned, as defined in Paragraph (2) of Clause B.7, "Fee Structure," in the amount of \$12,465,767.46 for Base Funded PMs and \$3,771,414.00 for Recovery Funded PMs. Allocated Base Funded Fee of \$6,890,142.40 for PM RL-11-02, Plutonium Finishing Plant Disposition remains as Provisional Fee, as defined in Paragraph (3) of Clause B.7, until the final fee determination for that PM.


J. G. Lechow, III
11-PRO-0300

-2-

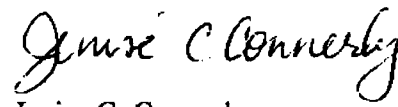
JUN 21 2011

Available Fee amounts of \$4,799,188.80 of Base Funded Fee and \$1,600,811.01 in Recovery Funded Fee were allocated to FY 2009, but were not assigned to PMs. Accordingly, these amounts are not forfeited by the contractor. Any amounts allocated to FY 2009 which the contractor has not had an opportunity to earn will either be offset by Fixed Fee payments negotiated for Change Orders or will be re-allocated to a future year of the Contract.

If you have any questions, please contact us, or you may contact Jonathan Dowell, Assistant Manager for Central Plateau, on (509) 373-9971, or Joe Franco, Assistant Manager for River Corridor, on (509) 376-4343.



Matt McCormick
Manager and Fee Determining Official



Jenise C. Connerly
Contracting Officer

PRO:JCC

Enclosure: Fee Reconciliation Table

cc w/encl.:

M. V. Bang, CHPRC

V. M. Bogenberger, CHPRC

S. M. Bork, CHPRC

J. A. Ciucci, CHPRC

R. M. Millikin, CHPRC

FY 2009 Fee Reconciliation Table

11-PRO-0300

Performance Measure Identifier	Date	Objective	FY09 Allocated Fee BASE	FY09 Allocated Fee RECOVERY	FY09 Allocated Fee Forfeited	FY09 Incremental (Earned) Allocated Fee BASE	FY09 Incremental (Earned) Allocated Fee RECOVERY	FY09 Provisional Allocated Fee
PM-11-01.1		De-inventory Special Nuclear Material and Complete Protected Area Closure Activities at the Plutonium Finishing Plant (PFP) Complex						
PM-11-01.1a		Complete de-inventory of Special Nuclear Material (SNM) Inventory stored at the PFP Complex. Complete protected area closure activities on or before January 31, 2010.						
PM-11-01.1a.2	9/30/2009	Complete de-inventory of un-irradiated fuel.	\$6,333,748.00	\$0.00	\$0.00	\$6,333,748.00	\$0.00	\$0.00
PM-11-02.1		Demolish Plutonium Finishing Plant (PFP) Complex Facilities to Slab-On-Grade and Stabilize the Site for Surveillance and Maintenance						
PM-11-02.1a	9/30/2013	Complete demolition of PFP facilities to slab-on-grade and stabilize the site for surveillance and maintenance.	\$6,890,142.40	\$3,000,000.00	\$0.00	\$0.00	\$3,000,000.00	\$6,890,142.40
RL-11 Sub Total			\$13,223,890.40	\$3,000,000.00	\$0.00	\$6,333,748.00	\$3,000,000.00	\$6,890,142.40
PM-12-01.1	9/30/2009	Disposition of the KE Reactor Basin and associated structures and waste sites.	\$400,000.00	\$0.00	\$0.00	\$400,000.00	\$0.00	\$0.00
PM-12-01.1a	9/30/2009	Completion of removal of the KE Basin substructure and stabilize the soil beneath the basin to allow the start of soil remediation.	\$75,000.00	\$0.00	\$0.00	\$75,000.00	\$0.00	\$0.00
PM-12-01.1b	9/15/2009	Complete removal and disposal of Ion Exchange Column (IXC) and Sand Filter monoliths in Environmental Restoration Disposal Facility (ERDF) or an appropriate waste disposal facility.	\$50,000.00	\$0.00	\$0.00	\$50,000.00	\$0.00	\$0.00
PM-12-01.1c	9/30/2009	Complete disposal of all KE Basin substructure rubble and soil removed during KE basin excavation.	\$27,956.24	\$0.00	\$0.00	\$27,956.24	\$0.00	\$0.00
PM-12-01.1d	9/25/2009	Complete Disposal of all 100 K Area Hose-In-Hose lines and pump stations, outside of the 100 K West Reactor Basin, at ERDF or an appropriate waste disposal site.	\$952,956.24	\$0.00	\$0.00	\$952,956.24	\$0.00	\$0.00
RL-12 Sub Total			\$774,956.24	\$0.00	\$0.00	\$774,956.24	\$0.00	\$0.00
PM-13-01.1		Waste Treatment and Disposal						
PM-13-01.1a (1st increment)	9/30/2009	Treat and package 1200 m3 of CH-LLW/MLLW as required to comply with applicable waste acceptance criteria for disposal. Dispose of 1200 m3 of CH LLW/MLLW.	\$74,769.85	\$0.00	\$0.00	\$74,769.85	\$0.00	\$0.00
PM-13-01.1a (2nd increment)	9/30/2009	Treat and package 1200 m3 of CH-LLW/MLLW as required to comply with applicable waste acceptance criteria for disposal. Dispose of 1200 m3 of CH LLW/MLLW.	\$74,769.85	\$0.00	\$0.00	\$74,769.85	\$0.00	\$0.00
PM-13-01.1a (3rd increment)	9/30/2009	Treat and package 1200 m3 of CH-LLW/MLLW as required to comply with applicable waste acceptance criteria for disposal. Dispose of 1200 m3 of CH LLW/MLLW.	\$74,769.85	\$0.00	\$0.00	\$74,769.85	\$0.00	\$0.00
PM-13-01.1a (4th increment)	9/30/2009	Treat and package 1200 m3 of CH-LLW/MLLW as required to comply with applicable waste acceptance criteria for disposal. Dispose of 1200 m3 of CH LLW/MLLW.	\$74,769.85	\$0.00	\$0.00	\$74,769.85	\$0.00	\$0.00
PM-13-01.1a (5th increment)	9/30/2009	Treat and package 1200 m3 of CH-LLW/MLLW as required to comply with applicable waste acceptance criteria for disposal. Dispose of 1200 m3 of CH LLW/MLLW.	\$74,769.85	\$0.00	\$0.00	\$74,769.85	\$0.00	\$0.00
PM-13-01.1a (6th increment)	9/30/2009	Treat and package 1200 m3 of CH-LLW/MLLW as required to comply with applicable waste acceptance criteria for disposal. Dispose of 1200 m3 of CH LLW/MLLW.	\$74,769.85	\$0.00	\$0.00	\$74,769.85	\$0.00	\$0.00

FY 2009 Fee Reconciliation Table

11-PRO-0300

Performance Measure Identifier	Date	Objective	FY09 Allocated Fee BASE	FY09 Allocated Fee RECOVERY	FY09 Allocated Fee Forfeited	FY09 Incremental (Earned) Allocated Fee BASE	FY09 Incremental (Earned) Allocated Fee RECOVERY	FY09 Provisional Allocated Fee
PM-13-01.1b (1st increment)	9/30/2009	Complete the following on 470 m3 CH-TRU/M waste: (1) Certify and/or repackaging to meet certification requirements CH-TRU/M waste for disposal at WIPP prior to closeout of the RL certification program; (2) Repackage and/or package CH-TRU/M waste such that meets the requirements of HNF-EP-0063, Hanford Site Solid Waste Acceptance Criteria; (3) Characterize CH-TRU/M waste ready to ship to Idaho.	\$250,000.00	\$0.00	\$0.00	\$250,000.00	\$0.00	\$0.00
PM-13-01.1b (2nd increment)	9/30/2009	Complete the following on 470 m3 CH-TRU/M waste: (1) Certify and/or repackaging to meet certification requirements CH-TRU/M waste for disposal at WIPP prior to closeout of the RL certification program; (2) Repackage and/or package CH-TRU/M waste such that meets the requirements of HNF-EP-0063, Hanford Site Solid Waste Acceptance Criteria; (3) Characterize CH-TRU/M waste ready to ship to Idaho.	\$250,000.00	\$0.00	\$0.00	\$250,000.00	\$0.00	\$0.00
PM-13-01.1b (3rd increment)	9/30/2009	Complete the following on 470 m3 CH-TRU/M waste: (1) Certify and/or repackaging to meet certification requirements CH-TRU/M waste for disposal at WIPP prior to closeout of the RL certification program; (2) Repackage and/or package CH-TRU/M waste such that meets the requirements of HNF-EP-0063, Hanford Site Solid Waste Acceptance Criteria; (3) Characterize CH-TRU/M waste ready to ship to Idaho.	\$250,000.00	\$0.00	\$0.00	\$250,000.00	\$0.00	\$0.00
PM-13-01.1b (4th increment)	9/30/2009	Complete the following on 470 m3 CH-TRU/M waste: (1) Certify and/or repackaging to meet certification requirements CH-TRU/M waste for disposal at WIPP prior to closeout of the RL certification program; (2) Repackage and/or package CH-TRU/M waste such that meets the requirements of HNF-EP-0063, Hanford Site Solid Waste Acceptance Criteria; (3) Characterize CH-TRU/M waste ready to ship to Idaho.	\$250,000.00	\$0.00	\$0.00	\$250,000.00	\$0.00	\$0.00
PM-13-01.1b (prohibited item)	9/30/2009	Complete the following on 470 m3 CH-TRU/M waste: (1) Certify and/or repackaging to meet certification requirements CH-TRU/M waste for disposal at WIPP prior to closeout of the RL certification program; (2) Repackage and/or package CH-TRU/M waste such that meets the requirements of HNF-EP-0063, Hanford Site Solid Waste Acceptance Criteria; (3) Characterize CH-TRU/M waste ready to ship to Idaho.	\$500,000.00	\$0.00	\$0.00	\$500,000.00	\$0.00	\$0.00
PM-13-02.1		Remote-handled and Large Container LLW/MLLW Disposition (M-91-43)						
PM-13-02.1a (1st increment)	9/30/2009	Treat and package 270 m3 of M-91-43 waste as necessary to comply with applicable waste acceptance criteria for disposal. Dispose 270 m3 of M-91-43 waste.	\$162,500.00	\$0.00	\$0.00	\$162,500.00	\$0.00	\$0.00
PM-13-02.1b (2nd increment)	9/30/2009	Treat and package 270 m3 of M-91-43 waste as necessary to comply with applicable waste acceptance criteria for disposal.	\$162,500.00	\$0.00	\$0.00	\$162,500.00	\$0.00	\$0.00
PM-13-03.1		Reduce the threat of release to the environment of suspect TRU waste per TPA Milestone M-91-40						

FY 2009 Fee Reconciliation Table

11-PRO-0300

Performance Measure Identifier	Date	Objective	FY09 Allocated Fee BASE	FY09 Allocated Fee RECOVERY	FY09 Allocated Fee Forfeited	FY09 Incremental (Earned) Allocated Fee BASE	FY09 Incremental (Earned) Allocated Fee RECOVERY	FY09 Provisional Allocated Fee
PM-13-03.1a	9/30/2009	Retrieve 250 m3 toward completion of TPA milestone M-91-40 for retrieval of suspect TRU waste on or before September 30, 2009.	\$1,000,000.00	\$0.00	\$0.00	\$1,000,000.00	\$0.00	\$0.00
RL-13 Sub Total			\$3,273,619.10	\$0.00	\$0.00	\$3,273,619.10	\$0.00	\$0.00
PM-30-01.1		Groundwater restoration in the 100-HR-3 Operable Unit (OU) (100-H, 100-D, and Horn Area)						
PM-30-01.1a		Implement improved interim and final actions at the 100-HR-3 Operable Unit.						
PM-30-01.1a.4		Complete pump-and-treat system resin testing.						
PM-30-01.1a.4(a)	8/31/2009	Complete the resin testing at 100-DR-5 pump-and-treat system located in the 100-HR-3 Operable Unit.	\$30,316.12	\$0.00	\$0.00	\$30,316.12	\$0.00	\$0.00
PM-30-05.1		200-ZP-1 Operable Unit Implement Final Remedy						
PM-30-05.1a		Construct and operate the 200 West Groundwater Remediation System to meet the 200-ZP-1 final Record of Decision and Remedial Design/Remedial Action Work Plan Requirements.						
PM-30-05.1a.1	9/30/2009	Complete field work to support design development of 200 West Groundwater Remediation System in accordance with the 200-ZP-1 final Record of Decision and Remedial Design/Remedial Action Work Plan Requirements.	\$75,000.00	\$0.00	\$0.00	\$75,000.00	\$0.00	\$0.00
PM-30-05.1a.2	9/30/2009	Install PW-1 soil vapor extraction (SVE) units and initiate operations.	\$75,000.00	\$0.00	\$0.00	\$75,000.00	\$0.00	\$0.00
RL-30 Sub Total			\$180,316.12	\$0.00	\$0.00	\$180,316.12	\$0.00	\$0.00
PM-40-01.1		In support of the 2015 Hanford Site Cleanup Vision Initiative to significantly reduce the active site footprint of cleanup—reduce the Central Plateau footprint to the industrial exclusive area defined under the Comprehensive Land Use Plan.						
PM-40-01.1a	9/30/2009	Demolish and dispose of 200N facilities 212-N, 212-P, and 212-R in accordance with the issued EE/CA Action Memorandum (AM) and the approved Removal Action Work Plan (RAWP).	\$0.00	\$166,738.67	\$0.00	\$0.00	\$166,738.67	\$0.00
PM-40-01.1a.1	9/30/2009	(212-N) Demolish and dispose of 200N facilities 212-N, 212-P, and 212-R in accordance with the issued EE/CA Action Memorandum (AM) and the approved Removal Action Work Plan (RAWP).	\$0.00	\$166,738.67	\$0.00	\$0.00	\$166,738.67	\$0.00
PM-40-01.1a.1	9/30/2009	(212-P) Demolish and dispose of 200N facilities 212-N, 212-P, and 212-R in accordance with the issued EE/CA Action Memorandum (AM) and the approved Removal Action Work Plan (RAWP).	\$0.00	\$166,738.67	\$0.00	\$0.00	\$166,738.67	\$0.00
PM-40-01.1a.1	9/30/2009	(212-R) Demolish and dispose of 200N facilities 212-N, 212-P, and 212-R in accordance with the issued EE/CA Action Memorandum (AM) and the approved Removal Action Work Plan (RAWP).	\$0.00	\$166,738.67	\$0.00	\$0.00	\$166,738.67	\$0.00
PM-40-01.1b	9/30/2009	(1st) Complete sampling of all CW-3 Operable Unit waste sites (216-N-1, 216-N-4, 200-N-3, 216-N-6, UPR-200-N-1, UPR-200-N-2, 600-285-PL, 600-286-PL, and 600-287-PL) in accordance with CERCLA work plans approved as of October 1, 2008.	\$0.00	\$27,119.80	\$0.00	\$0.00	\$27,119.80	\$0.00
PM-40-01.1b	9/30/2009	(2nd) Complete sampling of all CW-3 Operable Unit waste sites (216-N-1, 216-N-4, 200-N-3, 216-N-6, UPR-200-N-1, UPR-200-N-2, 600-285-PL, 600-286-PL, and 600-287-PL) in accordance with CERCLA work plans approved as of October 1, 2008.	\$0.00	\$27,119.80	\$0.00	\$0.00	\$27,119.80	\$0.00
PM-40-01.1b	9/30/2009	(3rd) Complete sampling of all CW-3 Operable Unit waste sites (216-N-1, 216-N-4, 200-N-3, 216-N-6, UPR-200-N-1, UPR-200-N-2, 600-285-PL, 600-286-PL, and 600-287-PL) in accordance with CERCLA work plans approved as of October 1, 2008.	\$0.00	\$27,119.80	\$0.00	\$0.00	\$27,119.80	\$0.00

FY 2009 Fee Reconciliation Table

11-PRO-0300

Performance Measure Identifier	Date	Objective	FY09 Allocated Fee BASE	FY09 Allocated Fee RECOVERY	FY09 Allocated Fee Forfeited	FY09 Incremental (Earned) Allocated Fee BASE	FY09 Incremental (Earned) Allocated Fee RECOVERY	FY09 Provisional Allocated Fee
PM-40-01.1b	9/30/2009	(4th) Complete sampling of all CW-3 Operable Unit waste sites (216-N-1, 216-N-4, 200-N-3, 216-N-6, UPR-200-N-1, UPR-200-N-2, 600-285-PL, 600-286-PL, and 600-287-PL) in accordance with CERCLA work plans approved as of October 1, 2008.	\$0.00	\$27,119.80	\$0.00	\$0.00	\$27,119.80	\$0.00
PM-40-01.1b	9/30/2009	(5th) Complete sampling of all CW-3 Operable Unit waste sites (216-N-1, 216-N-4, 200-N-3, 216-N-6, UPR-200-N-1, UPR-200-N-2, 600-285-PL, 600-286-PL, and 600-287-PL) in accordance with CERCLA work plans approved as of October 1, 2008.	\$0.00	\$27,119.80	\$0.00	\$0.00	\$27,119.80	\$0.00
PM-40-01.1b	9/30/2009	(6th) Complete sampling of all CW-3 Operable Unit waste sites (216-N-1, 216-N-4, 200-N-3, 216-N-6, UPR-200-N-1, UPR-200-N-2, 600-285-PL, 600-286-PL, and 600-287-PL) in accordance with CERCLA work plans approved as of October 1, 2008.	\$0.00	\$27,119.80	\$0.00	\$0.00	\$27,119.80	\$0.00
PM-40-01.1b	9/30/2009	(7th) Complete sampling of all CW-3 Operable Unit waste sites (216-N-1, 216-N-4, 200-N-3, 216-N-6, UPR-200-N-1, UPR-200-N-2, 600-285-PL, 600-286-PL, and 600-287-PL) in accordance with CERCLA work plans approved as of October 1, 2008.	\$0.00	\$27,119.80	\$0.00	\$0.00	\$27,119.80	\$0.00
PM-40-01.1b	9/30/2009	(8th) Complete sampling of all CW-3 Operable Unit waste sites (216-N-1, 216-N-4, 200-N-3, 216-N-6, UPR-200-N-1, UPR-200-N-2, 600-285-PL, 600-286-PL, and 600-287-PL) in accordance with CERCLA work plans approved as of October 1, 2008.	\$0.00	\$27,119.80	\$0.00	\$0.00	\$27,119.80	\$0.00
PM-40-01.1b	9/30/2009	(9th) Complete sampling of all CW-3 Operable Unit waste sites (216-N-1, 216-N-4, 200-N-3, 216-N-6, UPR-200-N-1, UPR-200-N-2, 600-285-PL, 600-286-PL, and 600-287-PL) in accordance with CERCLA work plans approved as of October 1, 2008.	\$0.00	\$54,239.60	\$0.00	\$0.00	\$54,239.60	\$0.00
PM-40.03.1		In support of the 2015 Hanford Site Cleanup Vision Initiative to conduct additional cleanup as funds become available—demolish and dispose facilities and buildings in the 200 West Area.						
PM-40-03.1a (10%)	9/30/2009	(2723-W) Complete the demolition of structures 272-W, 277-W, of 2723-W, 2728-W, 2707-W, MO-215, and 2704-W. Dispose all rubble, waste and other material produced through the demolition activity. Complete the demolition and disposal activities.	\$15,000.00	\$0.00	\$0.00	\$15,000.00	\$0.00	\$0.00
PM-40-03.1a (10%)	9/30/2009	(2728-W) Complete the demolition of structures 272-W, 277-W, of 2723-W, 2728-W, 2707-W, MO-215, and 2704-W. Dispose all rubble, waste and other material produced through the demolition activity. Complete the demolition and disposal activities.	\$15,000.00	\$0.00	\$0.00	\$15,000.00	\$0.00	\$0.00
PM-40-03.1a (10%)	9/30/2009	(2707-W) Complete the demolition of structures 272-W, 277-W, of 2723-W, 2728-W, 2707-W, MO-215, and 2704-W. Dispose all rubble, waste and other material produced through the demolition activity. Complete the demolition and disposal activities.	\$15,000.00	\$0.00	\$0.00	\$15,000.00	\$0.00	\$0.00
PM-40-03.1a (10%)	9/30/2009	(MO-215) Complete the demolition of structures 272-W, 277-W, of 2723-W, 2728-W, 2707-W, MO-215, and 2704-W. Dispose all rubble, waste and other material produced through the demolition activity. Complete the demolition and disposal activities.	\$15,000.00	\$0.00	\$0.00	\$15,000.00	\$0.00	\$0.00

FY 2009 Fee Reconciliation Table

11-PRO-0300

Performance Measure Identifier	Date	Objective	FY09 Allocated Fee BASE	FY09 Allocated Fee RECOVERY	FY09 Allocated Fee Forfeited	FY09 Incremental (Earned) Allocated Fee BASE	FY09 Incremental (Earned) Allocated Fee RECOVERY	FY09 Provisional Allocated Fee
PM-40-03.1a (10%)	9/30/2009	(2704-W) Complete the demolition of structures 272-W, 277-W, of 2723-W, 2728-W, 2707-W, MO-215, and 2704-W. Dispose all rubble, waste and other material produced through the demolition activity. Complete the demolition and disposal activities.	\$15,000.00	\$0.00	\$0.00	\$15,000.00	\$0.00	\$0.00
PM-40-03.1a (25%)	9/30/2009	(272-W) Complete the demolition of structures 272-W, 277-W, of 2723-W, 2728-W, 2707-W, MO-215, and 2704-W. Dispose all rubble, waste and other material produced through the demolition activity. Complete the demolition and disposal activities.	\$37,500.00	\$0.00	\$0.00	\$37,500.00	\$0.00	\$0.00
PM-40-03.1a (25%)	9/30/2009	(277-W) Complete the demolition of structures 272-W, 277-W, of 2723-W, 2728-W, 2707-W, MO-215, and 2704-W. Dispose all rubble, waste and other material produced through the demolition activity.	\$37,500.00	\$0.00	\$0.00	\$37,500.00	\$0.00	\$0.00
PM-40.04.1		In support of the 2015 Hanford Site Cleanup Vision Initiative to conduct additional cleanup as funds become available—complete closure of the U-Plant Canyon.						
PM-40.04.1a		Demolish and dispose U-Plant Ancillary Facilities (203-UX, 211-U, 211-UA, 224-U, and 224-UA).						
PM-40-04.1a.1		Demolish and dispose U-Plant Ancillary Facilities 211-U and 211-UA.						
PM-40-04.1a.1(a)	9/30/2009	(211-U) Demolish and dispose U-Plant Ancillary Facilities 211-U and 211-UA in accordance with the U-Plant Ancillary Facilities Removal Action Work Plan.	\$150,405.50	\$0.00	\$0.00	\$150,405.50	\$0.00	\$0.00
PM-40-04.1a.1(a)	9/30/2009	(211-UA) Demolish and dispose U-Plant Ancillary Facilities 211-U and 211-UA in accordance with the U-Plant Ancillary Facilities Removal Action Work Plan.	\$150,405.50	\$0.00	\$0.00	\$150,405.50	\$0.00	\$0.00
PM-40.04.1b		Complete demolition of the U-Plant Canyon (U-221)						
PM-40-04.1b.1	9/30/2009	Complete characterization of U-Plant Cell 30 tank contents as needed to facilitate final design and authorization basis upgrades.	\$406,317.00	\$0.00	\$0.00	\$406,317.00	\$0.00	\$0.00
RL-40 Sub Total			\$857,128.00	\$771,414.00	\$0.00	\$857,128.00	\$771,414.00	\$0.00
PM-41-01.1		Complete D-4 of facilities and remediation of waste sites in the 100-K Area.						
PM-41-01.1a	9/30/2009	Completion of D-4 of all 100-K Area ancillary facilities listed in TPA Change Notice 245 and remediation of waste sites listed in TPA Change Notice 242 for FY09, as identified for FY09 in the applicable remedial action work plan.	\$9,000.00	\$0.00	\$0.00	\$9,000.00	\$0.00	\$0.00
PM-41-01.1b		Complete demolition of the 1706-KE, 1706-KER, and 1706-KEL to grade.						
PM-41-01.1b.1	7/31/2009	Remove and dispose the 1706-KE waste treatment system (RCRA TSD, TPA Milestone M-16-052) in ERDF or an appropriate waste disposal site.	\$40,000.00	\$0.00	\$0.00	\$40,000.00	\$0.00	\$0.00
PM-41-01.1b.2	9/30/2009	Complete D4 of the 1706-KE, 1706-KER, and 1706-KEL facilities to grade of the surrounding landscape.	\$60,000.00	\$0.00	\$0.00	\$60,000.00	\$0.00	\$0.00
PM-41-01.1h	9/30/2009	Complete removal and disposal of all CERCLA legacy waste (~723 cubic meters).	\$10,000.00	\$0.00	\$0.00	\$10,000.00	\$0.00	\$0.00
PM-41-01.1k		Complete soil waste site remediation under the 105 KE Basin.						
PM-41-01.1k.1	9/30/2009	Initiate and sustain soil waste site remediation under the 105 KE Basin.	\$130,000.00	\$0.00	\$0.00	\$130,000.00	\$0.00	\$0.00

FY 2009 Fee Reconciliation Table

11-PRO-0300

Performance Measure Identifier	Date	Objective	FY09 Allocated Fee BASE	FY09 Allocated Fee RECOVERY	FY09 Incremental (Earned) Allocated Fee BASE	FY09 Incremental (Earned) Allocated Fee RECOVERY	FY09 Provisional Allocated Fee
RI-41 Sub Total			\$249,000.00	\$0.00	\$249,000.00	\$0.00	\$0.00
PM-42-01.1		Fast Flux Test Facility (FFTF) Complex Hazard Reduction					
PM-42-01.1a.1	9/30/2009	Remove and dispose the poly-chlorinated biphenyl (PCB) filled transformers from the FFTF plant.	\$68,000.00	\$0.00	\$68,000.00	\$0.00	\$0.00
PM-42-01.1a.2	9/30/2009	Complete disposition of the three loaded Disposable Solid Waste Casks (DSWCs) currently located at FFTF.	\$28,000.00	\$0.00	\$28,000.00	\$0.00	\$0.00
PM-42-01.1a.3	8/1/2009	Complete the deactivation of the FFTF plant and support structures, place FFTF in a low cost surveillance and maintenance mode, and turnover deactivated structures to the S&M organization by September 30, 2009.	\$523,000.00	\$0.00	\$523,000.00	\$0.00	\$0.00
RI-42 Sub Total			\$619,000.00	\$0.00	\$619,000.00	\$0.00	\$0.00
Project Total			\$19,355,909.86	\$3,771,414.00	\$12,465,767.46	\$3,771,414.00	\$6,890,142.40
Additional Fee Allocated to Year not assigned to Performance Measures			\$4,799,188.80	\$1,600,811.01	\$0.00	\$0.00	\$6,399,999.81
TOTAL			\$24,155,098.66	\$5,372,225.01	\$12,465,767.46	\$3,771,414.00	\$13,290,142.21



Department of Energy
Richland Operations Office
P.O. Box 550
Richland, Washington 99352

11-PRO-0311

JUL 20 2011

Mr. J. G. Lehew III, President
and Chief Executive Officer
CH2M HILL Plateau Remediation Company
Richland, Washington 99352

Dear Mr. Lehew:

**CONTRACT NO. DE-AC06-08RL14788 – FISCAL YEAR (FY) 2010 FEE
DETERMINATION AND PAYMENT**

Pursuant to the requirements of paragraph (d) of Clause B.8, "Fee Determination and Payment," the U.S. Department of Energy Richland Operations Office (RL) provides the following determination for FY 2010 against the Performance Measures (PM) contained in the Performance Evaluation and Measurement Plan, Section J, Attachment J.4.

FY 2010	Base Funded Fee	Recovery Funded Fee
Available Fee	\$15,000,000.00	\$33,235,725.79
Available Fee allocated to FY 2010 Performance Measures	\$3,555,832.00	\$3,000,000.00
Incremental Fee	\$3,555,832.00	\$3,000,000.00
Provisional Fee	\$6,856,286.40	\$13,852,276.28
Available Fee not allocated to Performance Measures and Objectives	\$4,587,881.60	\$16,383,449.51

Per the table above, and as detailed in the enclosed fee reconciliation table, FY 2010 Available Fee allocated to PMs has been earned, as defined in paragraph (2) of Clause B.7, "Fee Structure," in the amount of \$3,555,832.00 for Base Funded PMs and \$3,000,000.00 for Recovery Funded PMs. Allocated Base Funded Fee of \$6,856,286.40 for PM RL-11-02, Plutonium Finishing Plant Disposition remains as Provisional Fee, as defined in paragraph (3) of Clause B.7, until the final fee determination for that PM. Recovery Fee of \$13,852,276.28 was allocated to PMs with completion dates in FY 2011. Accordingly, this fee will remain as Provisional Fee until the final fee determination made after completion of the associated PMs.


Mr. J. G. Lehew III
11-PRO-0311

-2-

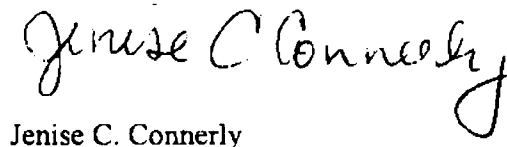
JUL 20 2011

Available Fee amounts of \$4,587,881.60 of Base Funded Fee and \$16,383,449.51 in Recovery Funded Fee were allocated to FY 2010, but were not assigned to PMs. Accordingly, these amounts are not forfeited by the contractor. Any amounts allocated to FY 2010 which the contractor has not had an opportunity to earn will either be offset by Fixed Fee payments negotiated for Change Orders or will be re-allocated to a future year of the contract.

If you have any questions, please contact us, or you may contact Jonathan A. Dowell, Assistant Manager for the Central Plateau, on (509) 373-9971, or Joe Franco, Assistant Manager for the River Corridor, on (509) 376-4343.



Matt McCormick
Manager



Jenise C. Connerly
Contracting Officer

PRO:JCC

Enclosure: Fee Reconciliation Table

cc w/encl:

M. V. Bang, CHPRC
V. M. Bogenberger, CHPRC
S. M. Bork, CHPRC
J. A. Ciucci, CHPRC
R. M. Millikin, CHPRC

FY 2010 Fee Reconciliation Table

11-PRO-XXXX

Performance Measure Identifier	Date	Objective	FY10 Allocated Fee BASE	FY10 Allocated Fee RECOVERY	FY10 Allocated Fee Forfeited	FY10 incremental (Earned) Allocated Fee BASE	FY10 incremental (Earned) Allocated Fee RECOVERY	FY10 Provisional Allocated Fee
PM-11-01.1		De-Inventories Special Nuclear Material and Complete Protected Area Closure Activities at the Plutonium Finishing Plant (PFP) Complex						
PM-11-01.1a		Complete de-inventory of Special Nuclear Material (SNM) Inventory stored at the PFP Complex. Complete protected area closure activities on or before January 31, 2010.						
PM-11-01.1a.3	12/31/2009	Complete de-inventory of the Slightly Irradiated Fuel (SIF) and miscellaneous fuels/materials (sources and standards).	\$1,777,916.00	\$0.00	\$0.00	\$1,777,916.00	\$0.00	\$0.00
PM-11-01.1a.4	1/31/2010	Complete deactivation of the protected area at PFP.	\$1,777,916.00	\$0.00	\$0.00	\$1,777,916.00	\$0.00	\$0.00
PM-11-02.1		Demolish Plutonium Finishing Plant (PFP) Complex Facilities to Slab-On-Grade and Stabilize the Site for Surveillance and Maintenance						
PM-11-02.1a	9/30/2013	Complete demolition of PFP facilities to slab-on-grade and stabilize the site for surveillance and maintenance.	\$6,856,286.40	\$3,000,000.00	\$0.00	\$0.00	\$3,000,000.00	\$6,856,286.40
RL-11 Sub Total			\$10,412,118.40	\$3,000,000.00	\$0.00	\$3,555,832.00	\$3,000,000.00	\$6,856,286.40
RL-12 Sub Total			\$0.00	\$0.00	\$0.00	\$0.00	\$0.00	\$0.00
PM-13-04.1		Waste Treatment and Disposal						
PM-13-04.1a (1st inc)	9/30/2011	Treat and dispose of 1,530 m3 of small container contact-handled low-level waste and mixed low-level waste.	\$0.00	\$310,000.00	\$0.00	\$0.00	\$0.00	\$310,000.00
PM-13-04.1a (2nd inc)	9/30/2011	Treat and dispose of 1,530 m3 of small container contact-handled low-level waste and mixed low-level waste.	\$0.00	\$310,000.00	\$0.00	\$0.00	\$0.00	\$310,000.00
PM-13-04.1a (3rd inc)	9/30/2011	Treat and dispose of 1,530 m3 of small container contact-handled low-level waste and mixed low-level waste.	\$0.00	\$310,000.00	\$0.00	\$0.00	\$0.00	\$310,000.00
PM-13-04.1b (1st inc)	9/30/2011	Treat and dispose of 370 m3 of remote-handled low-level/mixed low-level waste, and/or large-container low-level/mixed low-level waste. (100 m3 inc)	\$0.00	\$100,000.00	\$0.00	\$0.00	\$0.00	\$100,000.00
PM-13-05.1		Reduce the threat of release to the environment of suspect TRU waste						
PM-13-05.1a (1st inc)	9/30/2011	Retrieve 2500 m3 of contact-handled retrievably-stored suspect TRU waste toward completion of Tri-Party Agreement Milestone M-91-40	\$0.00	\$535,000.00	\$0.00	\$0.00	\$0.00	\$535,000.00
PM-13-05.1a (2nd inc)	9/30/2011	Retrieve 2500 m3 of contact-handled retrievably-stored suspect TRU waste toward completion of Tri-Party Agreement Milestone M-91-41	\$0.00	\$535,000.00	\$0.00	\$0.00	\$0.00	\$535,000.00
PM-13-05.1a (3rd inc)	9/30/2011	Retrieve 2500 m3 of contact-handled retrievably-stored suspect TRU waste toward completion of Tri-Party Agreement Milestone M-91-42	\$0.00	\$535,000.00	\$0.00	\$0.00	\$0.00	\$535,000.00
PM-13-05.1a (4th inc)	9/30/2011	Retrieve 2500 m3 of contact-handled retrievably-stored suspect TRU waste toward completion of Tri-Party Agreement Milestone M-91-43	\$0.00	\$535,000.00	\$0.00	\$0.00	\$0.00	\$535,000.00
PM-13-05.1a (5th inc)	9/30/2011	Retrieve 2500 m3 of contact-handled retrievably-stored suspect TRU waste toward completion of Tri-Party Agreement Milestone M-91-44	\$0.00	\$535,000.00	\$0.00	\$0.00	\$0.00	\$535,000.00
PM-13-06.1		Complete repackaging of Transuranic Waste.						
PM-13-06.1a (1st 110m3 inc)	9/30/2011	Complete the repackaging of 860 m3 of contact-handled transuranic waste drums, currently located in above ground storage, in a condition acceptable for Central Characterization Project certification	\$0.00	\$540,000.00	\$0.00	\$0.00	\$0.00	\$540,000.00

FY 2010 Fee Reconciliation Table

11-PRO-XXXX

Performance Measure Identifier	Date	Objective	FY10 Allocated Fee BASE	FY10 Allocated Fee RECOVERY	FY10 Allocated Fee Forfeited	FY10 Incremental (Earned) Allocated Fee BASE	FY10 Incremental (Earned) Allocated Fee RECOVERY	FY10 Provisional Allocated Fee
PM-13-06.1a (2nd 110m3 Inc)	9/30/2011	Complete the repackaging of 860 m3 of contact-handled transuranic waste drums, currently located in above ground storage, in a condition acceptable for Central Characterization Project certification.	\$0.00	\$540,000.00	\$0.00	\$0.00	\$0.00	\$540,000.00
PM-13-06.1a (3rd 110m3 Inc)	9/30/2011	Complete the repackaging of 860 m3 of contact-handled transuranic waste drums, currently located in above ground storage, in a condition acceptable for Central Characterization Project certification.	\$0.00	\$540,000.00	\$0.00	\$0.00	\$0.00	\$540,000.00
PM-13-06.1a (4th 110m3 Inc)	9/30/2011	Complete the repackaging of 860 m3 of contact-handled transuranic waste drums, currently located in above ground storage, in a condition acceptable for Central Characterization Project certification.	\$0.00	\$540,000.00	\$0.00	\$0.00	\$0.00	\$540,000.00
RL-13 Sub Total			\$0.00	\$6,865,000.00	\$0.00	\$0.00	\$0.00	\$6,865,000.00
PM-30-09.1a	9/30/2011	Well Decommissioning Decommission 280 priority wells required prior to implementation of the final Record of Decision (ROD) for each Operable Unit. (\$538 per well, payable quarterly)	\$0.00	\$75,000.00	\$0.00	\$0.00	\$0.00	\$75,000.00
PM-30-10.1a	9/30/2011	Well Drilling Complete 171 100-NR-2 Apatite Barrier Injection and monitoring wells supporting expansion of aptite barrier. (\$1,463.95 per well, payable quarterly)	\$0.00	\$250,335.45	\$0.00	\$0.00	\$0.00	\$250,335.45
PM-30-10.1b	9/30/2011	Complete drilling of 95 other wells associated with the following Tri-Party Agreement and operable unit work scope: M-24, 100-KR-4 RI/FS and RPO, 100-HR-3 RI/FS and RPO, 100-BC-5 RI/FS, 100-FR-3 RI/FS, 100-NR-2 RI/FS, 300-FE-5 RI/FS, 200-ZP-1 and 200-BP-5. (\$4,850 per well, payable quarterly)	\$0.00	\$291,000.00	\$0.00	\$0.00	\$0.00	\$291,000.00
RL-30 Sub Total			\$0.00	\$616,335.45	\$0.00	\$0.00	\$0.00	\$616,335.45
PM-40-04.1		In support of the 2015 Hanford Site Cleanup Vision Initiative to conduct additional cleanup as funds become available—complete closure of the U-Plant Canyon.						
PM-40-04.1a		Demolish and dispose U-Plant Ancillary Facilities (203-UX, 211-U, 211-UA, 224-U, and 224-UA).						
PM-40-04.1a.1		Demolish and dispose U-Plant Ancillary Facilities 211-U and 211-UA.						
PM-40-04.1a.1(b)	9/30/2011	Complete administrative closure for U-Plant Ancillary Facilities 211-U and 211-UA.	\$0.00	\$100,000.00	\$0.00	\$0.00	\$0.00	\$100,000.00
PM-40-04.1a.2		Remove U-Plant Ancillary Facilities 203-UX, 224-U, and 224-UA.						
PM-40-04.1a.2(a)	9/30/2011	Demolish and dispose U-Plant Ancillary Facilities 203-UX, 224 U, and 224-UA in accordance with the U-Plant Ancillary Facilities Removal Action Work Plan.	\$0.00	\$1,105,534.13	\$0.00	\$0.00	\$0.00	\$1,105,534.13
PM-40-04.1b		Complete demolition of the U-Plant Canyon (U-221)						
PM-40-04.1b.2	9/30/2011	Complete Cell 30 tank content removal or stabilization.	\$0.00	\$916,997.00	\$0.00	\$0.00	\$0.00	\$916,997.00
PM-40-06.1		In support of the 2015 Hanford Site Cleanup Vision Initiative to conduct additional cleanup as funds become available – Complete closure of the (NRDWL/BC Control Zone.						

FY 2010 Fee Reconciliation Table

11-PRO-XXXX

Performance Measure Identifier	Date	Objective	FY10 Allocated Fee BASE	FY10 Allocated Fee RECOVERY	FY10 Allocated Fee Forfeited	FY10 Incremental (Earned) Allocated Fee BASE	FY10 Incremental (Earned) Allocated Fee RECOVERY	FY10 Provisional Allocated Fee
PM-40-06.1a	9/30/2011	Complete Comprehensive Environmental Response, Compensation, and Liability Act of 1980 (CERCLA) removal actions for contaminated soil cleanup of the northern part of the BC Controlled Area (BCCA) in the Central Plateau Outer Area, as defined in the Hanford Site Cleanup Completion Framework and the Central Plateau Cleanup Completion Strategy. • 50% of the fee allocated against Performance Objective 1a may be earned for completion of CERCLA removal action of contaminated soil cleanup Zone A in the northern BCCA on or before September 30, 2011	\$0.00	\$275,099.00	\$0.00	\$0.00	\$0.00	\$275,099.00
PM-40-06.1a	9/30/2011	Complete Comprehensive Environmental Response, Compensation, and Liability Act of 1980 (CERCLA) removal actions for contaminated soil cleanup of the northern part of the BC Controlled Area (BCCA) in the Central Plateau Outer Area, as defined in the Hanford Site Cleanup Completion Framework and the Central Plateau Cleanup Completion Strategy. • 25% of the fee allocated against Performance Objective 1a may be earned for submitting and receiving DOE and Regulator approval of the Response Action Completion Report (RACR) for Zone A on or before September 30, 2011.	\$0.00	\$137,549.50	\$0.00	\$0.00	\$0.00	\$137,549.50
PM-40-07.1		In support of the 2015 Hanford Site Cleanup Vision Initiative to conduct additional cleanup as funds become available — Complete closure of the Semi Works Zone.						
PM-40-07.1a	9/30/2011	Complete 209-E nuclear facility hazard reduction and downgrade to less than Hazard Category 3.	\$0.00	\$149,012.00	\$0.00	\$0.00	\$0.00	\$149,012.00
PM-40-08.1		In support of the 2015 Hanford Site Cleanup Vision Initiative to conduct additional cleanup as funds become available — disposition structures in the 200 Areas.						
PM-40-08.1a	9/30/2011	Complete disposition of structures MO-104, MO-840, 284-E 272-E, 275-E, 2734-EA, 2701-M, MO-405, 284-W, 284-WB (MO 104, MO-840, MO-405)	\$0.00	\$729,249.20	\$0.00	\$0.00	\$0.00	\$729,249.20
PM-40 Sub Total		• 20% of the fee allocated against the Performance Objectives may be earned for demolition of MO-104, MO-840, MO-405 and disposal of oil rubble waste and other material produced through the demolition activities on or before September 30, 2011.	\$0.00	\$2,913,440.33	\$0.00	\$0.00	\$0.00	\$2,913,440.33
PM-41-02.1	9/30/2011	Complete demolition of structures in the 100-K Area	\$0.00	\$150,000.00	\$0.00	\$0.00	\$0.00	\$150,000.00
PM-41-02.1a (115KE)	9/30/2011	Complete demolition of 115KE, 116KE, 117KE, 118KE, 183.1KW, 183.2KW, 183.3KW, 183.4KW and 183.7KW.	\$0.00	\$25,000.00	\$0.00	\$0.00	\$0.00	\$25,000.00
PM-41-02.1a (116KE)	9/30/2011	Complete demolition of 115KE, 116KE, 117KE, 118KE, 183.1KW, 183.2KW, 183.3KW, 183.4KW and 183.7KW.	\$0.00	\$100,000.00	\$0.00	\$0.00	\$0.00	\$100,000.00
PM-41-02.1a (117KE)	9/30/2011	Complete demolition of 115KE, 116KE, 117KE, 118KE, 183.1KW, 183.2KW, 183.3KW, 183.4KW and 183.7KW.	\$0.00	\$5,000.00	\$0.00	\$0.00	\$0.00	\$5,000.00
PM-41-02.1a (118KE)	9/30/2011	Complete demolition of 115KE, 116KE, 117KE, 118KE, 183.1KW, 183.2KW, 183.3KW, 183.4KW and 183.7KW.	\$0.00	\$5,000.00	\$0.00	\$0.00	\$0.00	\$5,000.00

FY 2010 Fee Reconciliation Table

11-PRO-XXXX

Performance Measure Identifier	Date	Objective	FY10 Allocated Fee BASE	FY10 Allocated Fee RECOVERY	FY10 Allocated Fee Forfeited	FY10 Incremental (Earned) BASE	FY10 Incremental (Earned) RECOVERY	FY10 Provisional Allocated Fee
PM-41-02.1a (183.1KW)	9/30/2011	Complete demolition of 115KE, 116KE, 117KE, 118KE, 183.1KW, 183.2KW, 183.3KW, 183.4KW and 183.7KW.	\$0.00	\$100,000.00	\$0.00	\$0.00	\$0.00	\$100,000.00
PM-41-02.1a (183.2KW)	9/30/2011	Complete demolition of 115KE, 116KE, 117KE, 118KE, 183.1KW, 183.2KW, 183.3KW, 183.4KW and 183.7KW.	\$0.00	\$200,000.00	\$0.00	\$0.00	\$0.00	\$200,000.00
PM-41-02.1a (183.3KW)	9/30/2011	Complete demolition of 115KE, 116KE, 117KE, 118KE, 183.1KW, 183.2KW, 183.3KW, 183.4KW and 183.7KW.	\$0.00	\$100,000.00	\$0.00	\$0.00	\$0.00	\$100,000.00
PM-41-02.1a (183.4KW)	9/30/2011	Complete demolition of 115KE, 116KE, 117KE, 118KE, 183.1KW, 183.2KW, 183.3KW, 183.4KW and 183.7KW.	\$0.00	\$100,000.00	\$0.00	\$0.00	\$0.00	\$100,000.00
PM-41-02.1a (183.7KW)	9/30/2011	Complete demolition of 115KE, 116KE, 117KE, 118KE, 183.1KW, 183.2KW, 183.3KW, 183.4KW and 183.7KW.	\$0.00	\$75,000.00	\$0.00	\$0.00	\$0.00	\$75,000.00
PM-41-02.2 (100-K-3)	9/30/2011	COMPLETE REMEDIATION OF WASTE SITES IN THE 100-K AREA. Complete remediation of 100-K-3, 100-K-42, 100-K-47, 100-K-71, 116-KE-1, and 116-KE-3 waste sites inside the perimeter fence at 100 K Area.	\$0.00	\$25,000.00	\$0.00	\$0.00	\$0.00	\$25,000.00
PM-41-02.2a (100-K-42)	9/30/2011	Complete remediation of 100-K-3, 100-K-42, 100-K-47, 100-K-71, 116-KE-1, and 116-KE-3 waste sites inside the perimeter fence at 100 K Area.	\$0.00	\$150,000.00	\$0.00	\$0.00	\$0.00	\$150,000.00
PM-41-02.2a (100-K-47)	9/30/2011	Complete remediation of 100-K-3, 100-K-42, 100-K-47, 100-K-71, 116-KE-1, and 116-KE-3 waste sites inside the perimeter fence at 100 K Area.	\$0.00	\$50,000.00	\$0.00	\$0.00	\$0.00	\$50,000.00
PM-41-02.2a (100-K-71)	9/30/2011	Complete remediation of 100-K-3, 100-K-42, 100-K-47, 100-K-71, 116-KE-1, and 116-KE-3 waste sites inside the perimeter fence at 100 K Area.	\$0.00	\$25,000.00	\$0.00	\$0.00	\$0.00	\$25,000.00
PM-41-02.2a (116-KE-1)	9/30/2011	Complete remediation of 100-K-3, 100-K-42, 100-K-47, 100-K-71, 116-KE-1, and 116-KE-3 waste sites inside the perimeter fence at 100 K Area.	\$0.00	\$25,000.00	\$0.00	\$0.00	\$0.00	\$25,000.00
PM-41-02.2a (116-KE-3)	9/30/2011	Complete remediation of 100-K-3, 100-K-42, 100-K-47, 100-K-71, 116-KE-1, and 116-KE-3 waste sites inside the perimeter fence at 100 K Area.	\$0.00	\$50,000.00	\$0.00	\$0.00	\$0.00	\$50,000.00
PM-41-02.3	9/30/2011	Complete K West Basin debris removal and spent nuclear fuel/scrap free inspection and determination.	\$0.00	\$102,500.00	\$0.00	\$0.00	\$0.00	\$102,500.00
PM-41-02.3a	9/30/2011	Complete removal of debris in the K West Basin.	\$0.00	\$75,000.00	\$0.00	\$0.00	\$0.00	\$75,000.00
PM-41-02.3b	9/30/2011	Complete vacuuming of floor sludge in the K West Basin into Engineered Container 210.	\$0.00	\$250,000.00	\$0.00	\$0.00	\$0.00	\$250,000.00
PM-41-02.3c	9/30/2011	Determine K West Basin is spent nuclear fuel/fuel scrap free (i.e. "fuel free").	\$0.00	\$1,000,000.00	\$0.00	\$0.00	\$0.00	\$1,000,000.00
PM-41-02.4	9/30/2011	COMPLETE KE REACTOR DISPOSITION. Complete Deactivation of the 105KE Reactor Building necessary to place the KE Reactor facility in an ISS/Reactor Disposition-ready condition.	\$0.00	\$50,000.00	\$0.00	\$0.00	\$0.00	\$50,000.00
PM-41-02.4b	9/30/2011	Complete Characterization of the KE Reactor core.	\$0.00	\$500,000.00	\$0.00	\$0.00	\$0.00	\$500,000.00
PM-41-02.5	9/30/2011	COMPLETE 100K AREA UTILITY REROUTES Complete installation of an alternate 100K Area service water system.	\$0.00	\$200,000.00	\$0.00	\$0.00	\$0.00	\$200,000.00
PM-41-02.5b	9/30/2011	Complete preparations activities for electrical power isolation	\$0.00	\$100,000.00	\$0.00	\$0.00	\$0.00	\$100,000.00
PM-41-02.5c	9/30/2011	Complete installation of K West Basin HVAC system.	\$0.00	\$3,457,500.00	\$0.00	\$0.00	\$0.00	\$3,457,500.00
RL-41 Sub Total			\$0.00	\$0.00	\$0.00	\$0.00	\$0.00	\$0.00
RL-42 Sub Total			\$0.00	\$0.00	\$0.00	\$0.00	\$0.00	\$0.00

FY 2010 Fee Reconciliation Table

11-PRO-XXXX

Performance Measure Identifier	Date	Objective	FY10 Allocated		FY10 Allocated		FY10 Allocated		FY10 Incremental		FY10 Incremental		FY10 Incremental		FY10 Provisional	
			Fee	BASE	Fee	RECOVERY	Fee	Forfeited	Allocated Fee	BASE	Allocated Fee	RECOVERY	Allocated Fee	RECOVERY	Allocated Fee	RECOVERY
Project Total			\$10,412,118.40		\$16,852,276.28		\$0.00		\$3,555,832.00		\$3,000,000.00		\$20,708,562.68			
Additional Fee Allocated to Year not assigned to Performance Measures			\$4,587,881.60		\$16,383,449.51		\$0.00		\$0.00		\$0.00		\$20,971,391.11			
TOTAL			\$15,000,000.00		\$33,235,725.79		\$0.00		\$3,555,832.00		\$3,000,000.00		\$41,679,893.79			



Department of Energy
Richland Operations Office
P.O. Box 550
Richland, Washington 99352

12-PRO-0288

JUL 10 2012

Mr. J. G. Lechew III, President
and Chief Executive Officer
CH2M HILL Plateau Remediation Company
Richland, Washington 99352

Dear Mr. Lechew:

**CONTRACT NO. DE-AC06-08RL14788 – FISCAL YEAR (FY) 2011 BASE AND
AMERICAN RECOVERY AND REINVESTMENT ACT (RECOVERY) FEE
DETERMINATION**

Pursuant to the requirements of paragraph (d) of Clause B.8, "Fee Determination and Payment," the U.S. Department of Energy Richland Operations Office (RL) provides the following determination for FY 2011 against the Performance Measures (PM) contained in the Performance Evaluation and Measurement Plan, Section J, Attachment J.4.

FY 2011	Base Funded Fee	Recovery Funded Fee
Available Fee allocated to FY 2011*	\$8,582,848.60	\$59,245,602.40
Performance Measures		
Incremental Fee	\$1,697,315.00	\$58,133,941.90
Provisional Fee	\$6,835,533.60	\$0.00
Fee Forfeited	\$50,000.00	\$1,111,660.50

Per the table above, and as detailed in the enclosed fee reconciliation tables, FY 2011* Available Fee allocated to PMs has been earned, as defined in paragraph (2) of Clause B.7, "Fee Structure," in the amount of \$1,697,315.00 for Base Funded PMs and \$58,133,941.90 for Recovery Funded PMs. Allocated Base Funded Fee of \$6,835,533.60 for PM RL-11-02, Plutonium Finishing Plant Disposition, remains as Provisional Fee, as defined in paragraph (3) of Clause B.7, until the final fee determination for that PM.

CHPRC is to be commended for successfully meeting the completion criteria to merit full payment for 14 of the 15 Base funded and 183 of the 187 Recovery funded performance measures in FY 2011. This is a significant achievement considering the complexities of the additional work completed with Recovery Act funds during this period. The partial payment for one (1) Base funded and three (3) Recovery funded performance measures recognizes the value to the government despite limited instances of not completing work on time at the 209-East Facility, or quality issues with documentation for and work in the 100-K Area. In addition, CHPRC did not request fee for the Recovery Act funded water system installation in the 100-K Area.

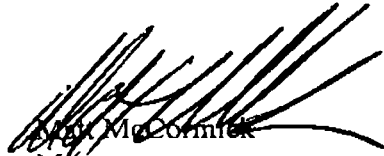
*In FY 2011, the contractor completed 14 performance measures scheduled for FY 2013. Accordingly, the fee allocation was moved forward and is included in this FY 2011 Fee Determination.

J. G. Lehew, III
12-PRO-0288

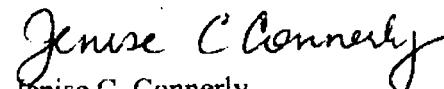
-2-

JUL 10 2012

If you have any questions, please contact us, or you may contact Jonathan A. Dowell, Assistant Manager for River and Plateau, on (509) 373-9971.



Mark McCormick
Manager



Jenise C. Connerly
Contracting Officer

PRO:JCC

Enclosures

Fiscal Year 2011 Base Fee Reconciliation Table

Fiscal Year 2011 ARRA Fee Reconciliation Table

cc w/encls:

M. V. Bang, CHPRC

V. M. Bogenberger, CHPRC

S. M. Bork, CHPRC

J. A. Ciucci, CHPRC

R. M. Millikin, CHPRC

FY 2011 Base Fee Reconciliation Table

Performance Measure Identifier	Maximum Fee Date	Objective	FY11 Allocated Fee BASE	FY11 Allocated Fee Forfeited	FY11 Incremental (Earned) Allocated Fee BASE	FY11 Provisional Allocated Fee	Completion Comments
PM-11-02.1		Demolish Plutonium Finishing Plant (PFP) Complex Facilities to Slab-On-Grade and Stabilize the Site for Surveillance and Maintenance					
PM-11-02.1a	9/30/2013	Complete demolition of PFP facilities to slab-on-grade and stabilize the site for surveillance and maintenance. Fee is reduced in a linear declining method to \$30,000,000 for each day to 9/30/2016, provided the option period is exercised.	\$6,835,533.60	\$0.00	\$0.00	\$6,835,533.60	Allocated fee remains as Provisional Fee, as defined in paragraph (3) of Clause 8.7, until the final fee determination for this measure.
RL-11 Sub Total			\$6,835,533.60	\$0.00	\$0.00	\$6,835,533.60	
PM-30-01.1a.4		Complete pump-and-treat system resin testing.					
PM-30-01.1a.4(b)	9/30/2013	Complete the resin testing at any pump-and-treat system within any River Corridor Operable Unit with the exception 100-DR-5 pump-and-treat system located in the 100-NR-3 Operable Unit. Complete the physical testing of the disposable resins and the waste determination of the spent resins. Submit a report that supports DOE in the goal of eliminating offsite ion exchange resin regeneration and includes a recommendation regarding site wide resin usage.	\$40,000.00	\$0.00	\$40,000.00	\$0.00	The Contractor completed this performance measure according to the established criteria.
PM-30-02.1		Groundwater Restoration in the 100-KR-4 Operable Unit					
PM-30-02.1a		Implement improved interim and final actions at the 100-KR-4 Operable Unit.					
PM-30-02.1a.1	9/30/2013	Expand current pump-and-treat system at 100-KR-4 and maintain a minimum 900 gpm groundwater flow through the KR-4 pump and treat facilities for a ten month period.	\$500,000.00	\$0.00	\$500,000.00	\$0.00	The Contractor completed this performance measure according to the established criteria.
PM-30-02.1c (Draft A R/FS)	9/30/2013	Implement Final 100-KR-4 OU Remedy. Issue the R/FS Report Draft A for submittal to regulators.	\$200,000.00	\$50,000.00	\$150,000.00	\$0.00	25% of the allocated fee is not earned for document quality issues.
PM-30-03.1		Groundwater Restoration in the 100-NR-2 Operable Unit					
PM-30-03.1a		Implement improved interim and final actions at the 100-NR-2 Operable Unit					

FY 2011 Base Fee Reconciliation Table

Performance Measure Identifier	Maximum Fee Date	Objective	FY11 Allocated Fee BASE	FY11 Allocated Fee Forfeited	FY11 Incremental (Earned) Allocated Fee BASE	FY11 Provisional Allocated Fee	Completion Comments
PM-30-03.1a.2 (initiate injection)	9/30/2013	Complete expansion of the 100-NR-2 aptitite permeable sequestration barrier in the vadose zone and in the aquifer by an additional 600 feet. Fabricate injection skids and initiate injection into the wells.	\$50,000.00	\$0.00	\$50,000.00	\$0.00	The Contractor completed this performance measure according to the established criteria.
PM-30-03.1a.2 (injection completion)	9/30/2013	Complete expansion of the 100-NR-2 aptitite permeable sequestration barrier in the vadose zone and in the aquifer by an additional 600 feet. Complete well injections.	\$50,000.00	\$0.00	\$50,000.00	\$0.00	The Contractor completed this performance measure according to the established criteria.
PM-30-05.1 PM-30-05.1a		200-ZP-1 Operable Unit Implement Final Remedy Construct and operate the 200 West Groundwater Remediation System to meet the 200-ZP-1 final Record of Decision and Remedial Design/Remedial Action Work Plan Requirements.					
PM-30-05.1a.5	9/30/2013	Optimize the operation of the 200-PW-1 Soil Vapor Extraction (SVE) units. During the first months of recent operations, minor adjustments have been made to improve the two new SVE units. However, these units have not been operating at full capacity. This performance incentive is designed to maximize the performance of these systems. Document 20% increase over FY09.	\$75,000.00	\$0.00	\$75,000.00	\$0.00	The Contractor completed this performance measure according to the established criteria.
PM-30-05.1a.5	9/30/2013	Optimize the operation of the 200-PW-1 Soil Vapor Extraction (SVE) units. During the first months of recent operations, minor adjustments have been made to improve the two new SVE units. However, these units have not been operating at full capacity. This performance incentive is designed to maximize the performance of these systems. Document volumetric treatment equal or greater than that of FY10 completion criteria.	\$75,000.00	\$0.00	\$75,000.00	\$0.00	The Contractor completed this performance measure according to the established criteria.
PM-30-06.1 PM-30-06.1a		200-UP-1 Operable Unit Implement Final Remedy Construct a groundwater extraction system to operate as a treatment system to address the 200-UP-1 OU final Record of Decision and Remedial Action/Remedial Design Work Plan Requirements.					
PM-30-06.1a.2 (Draft A RI/FS)	9/30/2013	Implement final 200-UP-1 OU remedy. Issue the RI/FS Report Draft A for submittal to regulators.	\$200,000.00	\$0.00	\$200,000.00	\$0.00	The Contractor completed this performance measure according to the established criteria.
PM-30-07.1 PM-30-07.1 (Modutank #2 construction completion and T/O to operations)	9/30/2013	Modutank Replacement Develop and implement a Modutank replacement strategy and demonstrate its effectiveness including disposal of the existing Modutank #1 structure and accumulated sludge/sediments in the existing tank. Submit a construction completion document and verify turnover to operations (defined as completion of ATP) for Modutank #2.	\$75,000.00	\$0.00	\$75,000.00	\$0.00	The Contractor completed this performance measure according to the established criteria.

FY 2011 Base Fee Reconciliation Table

Performance Measure Identifier	Maximum Fee Date	Objective	FY11 Allocated Fee BASE	FY11 Allocated Fee Forfeited	FY11 Incremental (Earned) Allocated Fee BASE	FY11 Provisional Allocated Fee	Completion Comments
PM-30-07.1 (Modutank #1 final closure)	9/30/2013	Develop and implement a Modutank replacement strategy and demonstrate its effectiveness including disposal of the existing Modutank #1 structure and accumulated sludge/sediments in the existing tank. Submit final closure documentation for Modutank #1 including evidence of complete dismantlement/disposal of Modutank #1 and disposal of accumulated sludge/sediment.	\$50,000.00	\$0.00	\$50,000.00	\$0.00	The Contractor completed this performance measure according to the established criteria.
PM-30-07.1 (Modutank #3 construction completion and T/O to operations)	9/30/2013	Develop and implement a Modutank replacement strategy and demonstrate its effectiveness including disposal of the existing Modutank #1 structure and accumulated sludge/sediments in the existing tank. Submit a construction completion document and verify turnover to operations (defined as completion of ATP) for Modutank #3.	\$75,000.00	\$0.00	\$75,000.00	\$0.00	The Contractor completed this performance measure according to the established criteria.
PM-30-08.1 (treatability test report)	9/30/2013	Deep Vadose Zone Treatability Perform characterization activities required in the Deep Vadose Zone Treatability Test Plan for the Hanford Central Plateau (DOE/RL-2007-56), including completion of borehole drilling, soil sampling, installation/operation of air-handling equipment to obtain in-situ soil pressure response readings and soil gas transmissivity measurements to demonstrate the viability of desiccation and in-situ gaseous reduction for the remediation of Technetium and Uranium in the Central Plateau. Submit the treatability test report for characterization of the Soil Desiccation Pilot Test site.	\$50,000.00	\$0.00	\$50,000.00	\$0.00	The Contractor completed this performance measure according to the established criteria.
PM-30-08.1 (desiccation pilot test start up)	9/30/2013	Perform characterization activities required in the Deep Vadose Zone Treatability Test Plan for the Hanford Central Plateau (DOE/RL-2007-56), including completion of borehole drilling, soil sampling, installation/operation of air-handling equipment to obtain in-situ soil pressure response readings and soil gas transmissivity measurements to demonstrate the viability of desiccation and in-situ gaseous reduction for the remediation of Technetium and Uranium in the Central Plateau. Initiate start-up of the Desiccation Pilot Test	\$250,000.00	\$0.00	\$250,000.00	\$0.00	The Contractor completed this performance measure according to the established criteria.
RL-30 Sub Total			\$1,690,000.00	\$50,000.00	\$1,640,000.00	\$0.00	
PM-40-08.1		In support of the 2015 Hanford Site Cleanup Vision initiative to conduct additional cleanup as funds become available — disposition structures in the 200 Areas.					
PM-40-08.1b	9/30/2011	Complete the disposition of Water Tower tanks 2902-B and 2901-S.	\$57,315.00	\$0.00	\$57,315.00	\$0.00	The Contractor completed this performance measure according to the established criteria.

FY 2011 Base Fee Reconciliation Table

Performance Measure Identifier	Maximum Fee Date	Objective	FY11 Allocated Fee BASE	FY11 Allocated Fee Forfeited	FY11 Incremental (Earned) Allocated Fee BASE	FY11 Provisional Allocated Fee	Completion Comments
RL-40 Sub Total			\$57,315.00	\$0.00	\$57,315.00	\$0.00	
TOTAL			\$8,582,848.60	\$50,000.00	\$1,697,315.00	\$6,835,533.60	

Performance Measure Identifier	Maximum Fee Date	Objective	Recovery Fee Allocated	FY11 Allocated Fee Forfeited	FY11 Incremental (Earned) Allocated Fee RECOVERY	Completion Comments
PM-11-02.1		Demolish Plutonium Finishing Plant (PFP) Complex Facilities to Slab-On-Grade and Stabilize the Site for Surveillance and Maintenance				
PM-11-02.1a	9/30/2013	Complete demolition of PFP facilities to slab-on-grade and stabilize the site for surveillance and maintenance. Fee is reduced in a linear declining method to \$30,000,000 for each day to 9/30/2016, provided the option period is exercised.	\$3,000,000.00	\$0.00	\$3,000,000.00	The Contractor completed sufficient provisional installment activities to merit conversion of provisional payments to incremental (earned) fee, subject to the annual limitation of \$3,000,000.
RL-11 Sub Total			\$3,000,000.00	\$0.00	\$3,000,000.00	
PM-13-04.1		Waste Treatment and Disposal				
PM-13-04.1a (1st inc)	9/30/2011	Treat and dispose of 1,530 m ³ of small container contact handled low-level waste and mixed low-level waste.	\$310,000.00	\$0.00	\$310,000.00	The Contractor completed this performance measure according to the established criteria.
PM-13-04.1a (2nd inc)	9/30/2011	Treat and dispose of 1,530 m ³ of small container contact handled low-level waste and mixed low-level waste.	\$310,000.00	\$0.00	\$310,000.00	The Contractor completed this performance measure according to the established criteria.
PM-13-04.1a (3rd inc)	9/30/2011	Treat and dispose of 1,530 m ³ of small container contact handled low-level waste and mixed low-level waste.	\$310,000.00	\$0.00	\$310,000.00	The Contractor completed this performance measure according to the established criteria.
PM-13-04.1a (4th inc)	9/30/2011	Treat and dispose of 1,530 m ³ of small container contact handled low-level waste and mixed low-level waste.	\$310,000.00	\$0.00	\$310,000.00	The Contractor completed this performance measure according to the established criteria.
PM-13-04.1a (5th inc)	9/30/2011	Treat and dispose of 1,530 m ³ of small container contact handled low-level waste and mixed low-level waste.	\$310,000.00	\$0.00	\$310,000.00	The Contractor completed this performance measure according to the established criteria.
PM-13-04.1a (6th inc)	9/30/2011	Treat and dispose of 1,530 m ³ of small container contact handled low-level waste and mixed low-level waste.	\$310,000.00	\$0.00	\$310,000.00	The Contractor completed this performance measure according to the established criteria.
PM-13-04.1b (1st inc)	9/30/2011	Treat and dispose of 370 m ³ of remote-handled low-level/mixed low-level waste, and/or large-container low-level/mixed low-level waste. (100 m ³ inc)	\$100,000.00	\$0.00	\$100,000.00	The Contractor completed this performance measure according to the established criteria.
PM-13-04.1b (2nd inc)	9/30/2011	Treat and dispose of 370 m ³ of remote-handled low-level/mixed low-level waste, and/or large-container low-level/mixed low-level waste. (100 m ³ inc)	\$100,000.00	\$0.00	\$100,000.00	The Contractor completed this performance measure according to the established criteria.
PM-13-04.1b (Add'l inc)	9/30/2011	Treat and dispose of 370 m ³ of remote-handled low-level/mixed low-level waste, and/or large-container low-level/mixed low-level waste. (Add'l 70 m ³ inc)	\$100,000.00	\$0.00	\$100,000.00	The Contractor completed this performance measure according to the established criteria.
PM-13-05.1		Reduce the threat of release to the environment of suspect TRU waste				
PM-13-05.1a (1st inc)	9/30/2011	Retrieve 2500 m ³ of contact-handled retrievably-stored suspect TRU waste toward completion of Tri-Party Agreement Milestone M-91-40.	\$535,000.00	\$0.00	\$535,000.00	The Contractor completed this performance measure according to the established criteria.
PM-13-05.1a (2nd inc)	9/30/2011	Retrieve 2500 m ³ of contact-handled retrievably-stored suspect TRU waste toward completion of Tri-Party Agreement Milestone M-91-41.	\$535,000.00	\$0.00	\$535,000.00	The Contractor completed this performance measure according to the established criteria.
PM-13-05.1a (3rd inc)	9/30/2011	Retrieve 2500 m ³ of contact-handled retrievably-stored suspect TRU waste toward completion of Tri-Party Agreement Milestone M-91-42.	\$535,000.00	\$0.00	\$535,000.00	The Contractor completed this performance measure according to the established criteria.
PM-13-05.1a (4th inc)	9/30/2011	Retrieve 2500 m ³ of contact-handled retrievably-stored suspect TRU waste toward completion of Tri-Party Agreement Milestone M-91-43.	\$535,000.00	\$0.00	\$535,000.00	The Contractor completed this performance measure according to the established criteria.

Performance Measure Identifier	Maximum Fee Date	Objective	Recovery Fee Allocated	FY11 Allocated Fee Forfeited	FY11 Incremental (Earned) Allocated Fee RECOVERY	Completion Comments
PM-13-05-1a (5th Inc)	9/30/2011	Retrieve 2500 m3 of contact-handled retrievably-stored suspect TRU waste toward completion of Tri-Party Agreement Milestone M-91-44	\$535,000.00	\$0.00	\$535,000.00	The Contractor completed this performance measure according to the established criteria.
PM-13-05-1a (6th Inc)	9/30/2011	Retrieve 2500 m3 of contact-handled retrievably-stored suspect TRU waste toward completion of Tri-Party Agreement Milestone M-91-45	\$535,000.00	\$0.00	\$535,000.00	The Contractor completed this performance measure according to the established criteria.
PM-13-05-1a (7th Inc)	9/30/2011	Retrieve 2500 m3 of contact-handled retrievably-stored suspect TRU waste toward completion of Tri-Party Agreement Milestone M-91-46	\$535,000.00	\$0.00	\$535,000.00	The Contractor completed this performance measure according to the established criteria.
PM-13-05-1a (8th Inc)	9/30/2011	Retrieve 2500 m3 of contact-handled retrievably-stored suspect TRU waste toward completion of Tri-Party Agreement Milestone M-91-47	\$535,000.00	\$0.00	\$535,000.00	The Contractor completed this performance measure according to the established criteria.
PM-13-05-1a (9th Inc)	9/30/2011	Retrieve 2500 m3 of contact-handled retrievably-stored suspect TRU waste toward completion of Tri-Party Agreement Milestone M-91-48	\$535,000.00	\$0.00	\$535,000.00	The Contractor completed this performance measure according to the established criteria.
PM-13-05-1a (10th Inc)	9/30/2011	Retrieve 2500 m3 of contact-handled retrievably-stored suspect TRU waste toward completion of Tri-Party Agreement Milestone M-91-49	\$535,000.00	\$0.00	\$535,000.00	The Contractor completed this performance measure according to the established criteria.
PM-13-05-1a (11st Inc)	7/31/2011	Retrieve 2500 m3 of contact-handled retrievably-stored suspect TRU waste toward completion of Tri-Party Agreement Milestone M-91-49 (point of generation Technology)	\$250,000.00	\$0.00	\$250,000.00	The Contractor completed this performance measure according to the established criteria.
PM-13-05-1a (add'l 50m3)	9/30/2011	Retrieve 2500 m3 of contact-handled retrievably-stored suspect TRU waste toward completion of Tri-Party Agreement Milestone M-91-49	\$200,000.00	\$0.00	\$200,000.00	The Contractor completed this performance measure according to the established criteria.
PM-13-05-1a (add'l 50m3)	9/30/2011	Retrieve 2500 m3 of contact-handled retrievably-stored suspect TRU waste toward completion of Tri-Party Agreement Milestone M-91-49	\$200,000.00	\$0.00	\$200,000.00	The Contractor completed this performance measure according to the established criteria.
PM-13-05-1a (add'l 50m3)	9/30/2011	Retrieve 2500 m3 of contact-handled retrievably-stored suspect TRU waste toward completion of Tri-Party Agreement Milestone M-91-49	\$200,000.00	\$0.00	\$200,000.00	The Contractor completed this performance measure according to the established criteria.
PM-13-05-1a (add'l 50m3)	9/30/2011	Retrieve 70 m3 of suspect remote handled retrievably-stored TRU waste toward completion of Tri-Party Agreement Milestone M-91-41	\$50,000.00	\$0.00	\$50,000.00	The Contractor completed this performance measure according to the established criteria.
PM-13-06-1a (1st 110m3 Inc)	9/30/2011	Complete repackaging of Transuranic Waste. Complete the repackaging of 860 m3 of contact-handled transuranic waste drums, currently located in above ground storage, in a condition acceptable for Central Characterization Project certification.	\$540,000.00	\$0.00	\$540,000.00	The Contractor completed this performance measure according to the established criteria.
PM-13-06-1a (2nd 110m3 Inc)	9/30/2011	Complete the repackaging of 860 m3 of contact-handled transuranic waste drums, currently located in above ground storage, in a condition acceptable for Central Characterization Project certification.	\$540,000.00	\$0.00	\$540,000.00	The Contractor completed this performance measure according to the established criteria.
PM-13-06-1a (3rd 110m3 Inc)	9/30/2011	Complete the repackaging of 860 m3 of contact-handled transuranic waste drums, currently located in above ground storage, in a condition acceptable for Central Characterization Project certification.	\$540,000.00	\$0.00	\$540,000.00	The Contractor completed this performance measure according to the established criteria.
PM-13-06-1a (4th 110m3 Inc)	9/30/2011	Complete the repackaging of 860 m3 of contact-handled transuranic waste drums, currently located in above ground storage, in a condition acceptable for Central Characterization Project certification.	\$540,000.00	\$0.00	\$540,000.00	The Contractor completed this performance measure according to the established criteria.

Performance Measure Identifier	Maximum Fee Date	Objective	Recovery Fee Allocated	FY11 Allocated Fee Forfeited	FY11 Incremental (Earned) Allocated Fee RECOVERY	Completion Comments
PM-13-06.1a (5th 110m3 inc)	9/30/2011	Complete the repackaging of 860 m3 of contact-handled transuranic waste drums, currently located in above ground storage, in a condition acceptable for Central Characterization Project certification.	\$540,000.00	\$0.00	\$540,000.00	The Contractor completed this performance measure according to the established criteria.
PM-13-06.1a (6th 110m3 inc)	9/30/2011	Complete the repackaging of 860 m3 of contact-handled transuranic waste drums, currently located in above ground storage, in a condition acceptable for Central Characterization Project certification.	\$540,000.00	\$0.00	\$540,000.00	The Contractor completed this performance measure according to the established criteria.
PM-13-06.1a (7th 110m3 inc)	9/30/2011	Complete the repackaging of 860 m3 of contact-handled transuranic waste drums, currently located in above ground storage, in a condition acceptable for Central Characterization Project certification.	\$540,000.00	\$0.00	\$540,000.00	The Contractor completed this performance measure according to the established criteria.
PM-13-06.1a (8th 90m3 inc)	9/30/2011	Complete the repackaging of 860 m3 of contact-handled transuranic waste drums, currently located in above ground storage, in a condition acceptable for Central Characterization Project certification.	\$1,000,000.00	\$0.00	\$1,000,000.00	The Contractor completed this performance measure according to the established criteria.
PM-13-06.1a (initiate 1st container inc)	9/30/2011	Complete the repackaging of 860 m3 of contact-handled transuranic waste drums, currently located in above ground storage, in a condition acceptable for Central Characterization Project certification.	\$175,000.00	\$0.00	\$175,000.00	The Contractor completed this performance measure according to the established criteria.
PM-13-06.1a (complete 25M3 or larger container inc)	9/30/2011	Complete the repackaging of 860 m3 of contact-handled transuranic waste drums, currently located in above ground storage, in a condition acceptable for Central Characterization Project certification.	\$725,000.00	\$0.00	\$725,000.00	The Contractor completed this performance measure according to the established criteria.
PM-13-07.1a	9/30/2011	Provide certifiable waste and complete loading/shipping activities in support of the first shipment of contact-handled TRU waste to the Waste Isolation Pilot Plant (WIPP) in accordance with the DOE National TRU Acceleration Plan.	\$50,000.00	\$0.00	\$50,000.00	The Contractor completed this performance measure according to the established criteria.
PM-13-07.1c (1st increment)	9/30/2011	Support National TRU Waste Program shipping goals. Provide support for loading and shipping activities in support of the CCP mobile loading crew for shipment of TRU waste off-site consistent with the National TRU Waste Program goals. First increment of 50 TRU waste shipments.	\$305,000.00	\$0.00	\$305,000.00	The Contractor completed this performance measure according to the established criteria.
PM-13-07.1c (2nd increment)	9/30/2011	Support National TRU Waste Program shipping goals. Provide support for loading and shipping activities in support of the CCP mobile loading crew for shipment of TRU waste off-site consistent with the National TRU Waste Program goals. Second increment of 50 TRU waste shipments.	\$305,000.00	\$0.00	\$305,000.00	The Contractor completed this performance measure according to the established criteria.
PM-13-07.1c (3rd increment)	9/30/2011	Support National TRU Waste Program shipping goals. Provide support for loading and shipping activities in support of the CCP mobile loading crew for shipment of TRU waste off-site consistent with the National TRU Waste Program goals. Third increment of 50 TRU waste shipments.	\$305,000.00	\$0.00	\$305,000.00	The Contractor completed this performance measure according to the established criteria.

Performance Measure Identifier	Maximum Fee Date	Objective	Recovery Fee Allocated	FY11 Allocated Fee Forfeited	FY11 Incremental (Earned) Allocated Fee RECOVERY	Completion Comments
PM-13-07-1c (4th Increment)	9/30/2011	Support National TRU Waste Program shipping goals. Provide support for loading and shipping activities in support of the CCP mobile loading crew for shipment of TRU waste off-site consistent with the National TRU Waste Program goals. Fourth increment of 50 TRU waste shipments.	\$305,000.00	\$0.00	\$305,000.00	The Contractor completed this performance measure according to the established criteria.
PM-13-07-1c (5th Increment)	9/30/2011	Support National TRU Waste Program shipping goals. Provide support for loading and shipping activities in support of the CCP mobile loading crew for shipment of TRU waste off-site consistent with the National TRU Waste Program goals. Fifth increment of 50 TRU waste shipments.	\$305,000.00	\$0.00	\$305,000.00	The Contractor completed this performance measure according to the established criteria.
RL-13 Sub Total PM-30-01.1			\$15,165,000.00	\$0.00	\$15,165,000.00	
PM-30-01.1a		Groundwater restoration in the 100-HR-3 Operable Unit (OU) (100-H, 100-D, and Hom Aves)				
PM-30-01.1a (4)	9/30/2011	Implement improved interim and final actions at the 100-HR-3 Operable Unit. Expand current pump-and-treat operational capacity utilizing ex situ treatment, in situ treatment, or a combination of both at 100-HR-3 Operable Unit to be operational and functional at a minimum 600 gpm capacity (DX), or as specified in the 100-HR-3 Operable Unit work plan.	\$7,500,000.00	\$0.00	\$2,500,000.00	The Contractor completed this performance measure according to the established criteria.
PM-30-05.1		200-ZP-1 Operable Unit Implement Final Remedy				
PM-30-05.1a		Construct and operate the 200 West Groundwater Remediation System to meet the 200-ZP-1 final Record of Decision and Remedial Design/Remedial Action Work Plan Requirements.				
PM-30-05.1a.3(a) (90% Design)	9/30/2011	Complete design, construction, and acceptance testing of the 200 West Groundwater Remediation System in accordance with the Remedial Design/Remedial Action Work Plan and the 200-ZP-1 final Record of Decision. Issue the 90% design.	\$500,000.00	\$0.00	\$500,000.00	The Contractor completed this performance measure according to the established criteria.
PM-30-05.1a.3(a) (17 Well Network)	9/30/2011	Complete design, construction, and acceptance testing of the 200 West Groundwater Remediation System in accordance with the Remedial Design/Remedial Action Work Plan and the 200-ZP-1 final Record of Decision. Install the initial 17 well extraction and injection well network.	\$250,000.00	\$0.00	\$250,000.00	The Contractor completed this performance measure according to the established criteria.
PM-30-05.1a.3(a) (Fabrication and Inspection of Major Process Equipment)	9/30/2011	Complete design, construction, and acceptance testing of the 200 West Groundwater Remediation System in accordance with the Remedial Design/Remedial Action Work Plan and the 200-ZP-1 final Record of Decision. Complete fabrication and inspection of major process equipment.	\$1,000,000.00	\$0.00	\$1,000,000.00	The Contractor completed this performance measure according to the established criteria.
PM-30-05.1a.3(a) (Transfer Buildings 1-4)	9/30/2011	Complete design, construction, and acceptance testing of the 200 West Groundwater Remediation System in accordance with the Remedial Design/Remedial Action Work Plan and the 200-ZP-1 final Record of Decision. Complete construction of Transfer Buildings (1-4).	\$500,000.00	\$0.00	\$500,000.00	The Contractor completed this performance measure according to the established criteria.

FY 2011: ARRA Fee Reconciliation Table

Performance Measure Identifier	Maximum Fee Date	Objective	Recovery Fee Allocated	FY11 Allocated Fee Forfeited	FY11 Incremental (Earned) Allocated Fee RECOVERY	Completion Comments
PM-30-05.1a.3(a) (Radiological and Bio-Process Buildings)	9/30/2011	Complete design, construction, and acceptance testing of the 200 West Groundwater Remediation System in accordance with the Remedial Design/Remedial Action Work Plan and the 200-ZP-1 Final Record of Decision. Complete construction of the Radiological and Bio-Process Buildings	\$2,000,000.00	\$0.00	\$2,000,000.00	The Contractor completed this performance measure according to the established criteria.
PM-30-05.1a.3(a) (Final design, construction and acceptance testing)	9/30/2011	Complete design, construction, and acceptance testing of the 200 West Groundwater Remediation System in accordance with the Remedial Design/Remedial Action Work Plan and the 200-ZP-1 Final Record of Decision. Complete final design (issued for Construction (IFC) drawings), construction and construction acceptance testing of the 200 West Groundwater Remediation System.	\$10,110,782.72	\$0.00	\$10,110,782.72	The Contractor completed this performance measure according to the established criteria.
PM-30-09.1 PM-30-09.1a	9/30/2011	Well Decommissioning Decommission 280 priority wells required prior to implementation of the Final Record of Decision (ROD) for each Operable Unit. (\$538 per well, payable quarterly)	\$150,640.00	\$0.00	\$150,640.00	The Contractor completed this performance measure according to the established criteria.
PM-30-10.1 PM-30-10.1a	9/30/2011	Well Drilling Complete 171 100-NR-2 Aquifer Barrier injection and monitoring wells supporting expansion of aquifer barrier. (\$1,463.95 per well, payable quarterly)	\$250,335.45	\$0.00	\$250,335.45	The Contractor completed this performance measure according to the established criteria.
PM-30-10.1b	9/30/2011	Complete drilling of 95 other wells associated with the following Tri-Party Agreement and Operable Unit work scope: M-24, 100-KR-4 RI/FS and RPO, 100-NR-3 RI/FS and RPO, 100-BC-5 RI/FS, 100-FR-3 RI/FS, 100-NR-2 RI/FS, 300-FR-5 RI/FS, 200-ZP-1 and 200-BP-5. (\$4,850 per well, payable quarterly)	\$460,750.00	\$0.00	\$460,750.00	The Contractor completed this performance measure according to the established criteria.
RL-30 Sub Total PM-40-01.1		In support of the 2015 Hanford Site Cleanup Vision Initiative to significantly reduce the active site footprint of cleanup—reduce the Central Plateau footprint to the industrial exclusive area defined under the Comprehensive Land Use Plan.	\$19,721,508.17	\$0.00	\$19,721,508.17	
PM-40-01.1a		Demolish and dispose of 200N facilities 212-N, 212-P, and 212-R.				
PM-40-01.1a.2	9/30/2011	Complete administrative closure for 200N facilities: 212-N, 212-P, and 212-R.	\$100,000.00	\$0.00	\$100,000.00	The Contractor completed this performance measure according to the established criteria.
PM-40-01.1c	9/30/2011	Complete remediation/closure of CW-3 Operable Unit waste sites (216-N-1, 216-N-4, 200-N-3, 2607-N, 2607-P, 216-N-6, 2607-R, UPR-200-N-1, UPR-200-N-2, 600-285-PL, 600-286-PL, 600-287-PL) in accordance with CERCLA work plans approved as of October 1, 2008.	\$34,387.40	\$0.00	\$34,387.40	The Contractor completed this performance measure according to the established criteria.
		* 5% of the fee allocated against Performance Objective 1c may be earned for each of the first four waste sites remediated, backfilled, and contoured.				

FY 2011 ARRA Fee Reconciliation Table

Performance Measure Identifier	Maximum Fee Date	Objective	Recovery Fee Allocated	FY11 Allocated Fee Forfeited	FY11 Incremental (Earned) Allocated Fee RECOVERY	Completion Comments
PM-40-01.1c	9/30/2011	Complete remediation/closure of CW-3 Operable Unit waste sites (216-N-1, 216-N-4, 200-N-3, 2607-N, 2607-P, 216-N-6, 2607-R, UPR-200-N-1, UPR-200-N-2, 600-285-PL, 600-286-PL, 600-287-PL) in accordance with CERCLA work plans approved as of October 1, 2008. • 5% of the fee allocated against Performance Objective 1c may be earned for each of the first four waste sites remediated, backfilled, and contoured.	\$34,387.40	\$0.00	\$34,387.40	The Contractor completed this performance measure according to the established criteria.
PM-40-01.1c	9/30/2011	Complete remediation/closure of CW-3 Operable Unit waste sites (216-N-1, 216-N-4, 200-N-3, 2607-N, 2607-P, 216-N-6, 2607-R, UPR-200-N-1, UPR-200-N-2, 600-285-PL, 600-286-PL, 600-287-PL) in accordance with CERCLA work plans approved as of October 1, 2008. • 5% of the fee allocated against Performance Objective 1c may be earned for each of the first four waste sites remediated, backfilled, and contoured.	\$34,387.40	\$0.00	\$34,387.40	The Contractor completed this performance measure according to the established criteria.
PM-40-01.1c	9/30/2011	Complete remediation/closure of CW-3 Operable Unit waste sites (216-N-1, 216-N-4, 200-N-3, 2607-N, 2607-P, 216-N-6, 2607-R, UPR-200-N-1, UPR-200-N-2, 600-285-PL, 600-286-PL, 600-287-PL) in accordance with CERCLA work plans approved as of October 1, 2008. • 5% of the fee allocated against Performance Objective 1c may be earned for each of the first four waste sites remediated, backfilled, and contoured.	\$34,387.40	\$0.00	\$34,387.40	The Contractor completed this performance measure according to the established criteria.
PM-40-01.1c	9/30/2011	Complete remediation/closure of CW-3 Operable Unit waste sites (216-N-1, 216-N-4, 200-N-3, 2607-N, 2607-P, 216-N-6, 2607-R, UPR-200-N-1, UPR-200-N-2, 600-285-PL, 600-286-PL, 600-287-PL) in accordance with CERCLA work plans approved as of October 1, 2008. • 5% of the fee allocated against Performance Objective 1c may be earned for each of the first four waste sites remediated, backfilled, and contoured.	\$61,897.32	\$0.00	\$61,897.32	The Contractor completed this performance measure according to the established criteria.
PM-40-01.1c	9/30/2011	Complete remediation/closure of CW-3 Operable Unit waste sites (216-N-1, 216-N-4, 200-N-3, 2607-N, 2607-P, 216-N-6, 2607-R, UPR-200-N-1, UPR-200-N-2, 600-285-PL, 600-286-PL, 600-287-PL) in accordance with CERCLA work plans approved as of October 1, 2008. • 9% of the fee allocated against Performance Objective 1c may be earned for completion of remediation and backfill for each of the eight remaining waste sites.	\$61,897.32	\$0.00	\$61,897.32	The Contractor completed this performance measure according to the established criteria.

FY 2011 ABRA Fee Reconciliation Table

Performance Measure Identifier	Maximum Fee Date	Objective	Recovery Fee Allocated	PV11 Allocated Fee Forfeited	PV13 Incremental (Earned) Allocated Fee RECOVERY	Completion Comments
PW-40-01.1c	9/30/2011	Complete remediation/closure of CW-3 Operable Unit waste sites (216-N-1, 216-N-4, 200-N-3, 2607-N, 2607-P, 216-N-6, 2607-R, UPR-200-N-1, 600-285-PL, 600-286-PL, 600-287-PL) in accordance with CERCLA work plans approved as of October 1, 2008. • 9% of the fee allocated against Performance Objective 1c may be earned for completion of remediation and backfill for each of the eight remaining waste sites.	\$61,897.32	\$0.00	\$61,897.32	The Contractor completed this performance measure according to the established criteria.
PW-40-01.1c	9/30/2011	Complete remediation/closure of CW-3 Operable Unit waste sites (216-N-1, 216-N-4, 200-N-3, 2607-N, 2607-P, 216-N-6, 2607-R, UPR-200-N-1, 600-285-PL, 600-286-PL, 600-287-PL) in accordance with CERCLA work plans approved as of October 1, 2008. • 9% of the fee allocated against Performance Objective 1c may be earned for completion of remediation and backfill for each of the eight remaining waste sites.	\$61,897.32	\$0.00	\$61,897.32	The Contractor completed this performance measure according to the established criteria.
PW-40-01.1c	9/30/2011	Complete remediation/closure of CW-3 Operable Unit waste sites (216-N-1, 216-N-4, 200-N-3, 2607-N, 2607-P, 216-N-6, 2607-R, UPR-200-N-1, 600-285-PL, 600-286-PL, 600-287-PL) in accordance with CERCLA work plans approved as of October 1, 2008. • 9% of the fee allocated against Performance Objective 1c may be earned for completion of remediation and backfill for each of the eight remaining waste sites.	\$61,897.32	\$0.00	\$61,897.32	The Contractor completed this performance measure according to the established criteria.
PW-40-01.1c	9/30/2011	Complete remediation/closure of CW-3 Operable Unit waste sites (216-N-1, 216-N-4, 200-N-3, 2607-N, 2607-P, 216-N-6, 2607-R, UPR-200-N-1, 600-285-PL, 600-286-PL, 600-287-PL) in accordance with CERCLA work plans approved as of October 1, 2008. • 9% of the fee allocated against Performance Objective 1c may be earned for completion of remediation and backfill for each of the eight remaining waste sites.	\$61,897.32	\$0.00	\$61,897.32	The Contractor completed this performance measure according to the established criteria.

FY 2011 ARRA Fee Reconciliation Table

Performance Measure Identifier	Maximum Fee Date	Objective	Recovery Fee Allocated	FY11 Allocated Fee Forfeited	FY11 Incremental (Earned) Allocated Fee RECOVERY	Completion Comments
PM-40-01.1c	9/30/2011	Complete remediation/closure of CW-3 Operable Unit waste sites (216-N-1, 216-N-4, 200-N-3, 2607-N, 2607-P, 216-N-6, 2607-R, UPR-200-N-1, UPR-200-N-2, 600-285-PL, 600-286-PL, 600-287-PL) in accordance with CERCLA work plans approved as of October 1, 2008. • 9% of the fee allocated against Performance Objective 1c may be earned for completion of remediation and backfill for each of the eight remaining waste sites.	\$61,897.32	\$0.00	\$61,897.32	The Contractor completed this performance measure according to the established criteria.
PM-40-01.1c	9/30/2011	Complete remediation/closure of CW-3 Operable Unit waste sites (216-N-1, 216-N-4, 200-N-3, 2607-N, 2607-P, 216-N-6, 2607-R, UPR-200-N-1, UPR-200-N-2, 600-285-PL, 600-286-PL, 600-287-PL) in accordance with CERCLA work plans approved as of October 1, 2008. • 9% of the fee allocated against Performance Objective 1c may be earned for completion of remediation and backfill for each of the eight remaining waste sites.	\$61,897.32	\$0.00	\$61,897.32	The Contractor completed this performance measure according to the established criteria.
PM-40-01.1c	9/30/2011	Complete remediation/closure of CW-3 Operable Unit waste sites (216-N-1, 216-N-4, 200-N-3, 2607-N, 2607-P, 216-N-6, 2607-R, UPR-200-N-1, UPR-200-N-2, 600-285-PL, 600-286-PL, 600-287-PL) in accordance with CERCLA work plans approved as of October 1, 2008. • 8% of the fee allocated against Performance Objective 1c may be earned upon approval by DOE of Response Action Reports (RAR) for all 12 waste sites.	\$55,019.84	\$0.00	\$55,019.84	The Contractor completed this performance measure according to the established criteria.
PM-40-01.1d	9/30/2011	Disposition/Relocate locomotives and railcars (Rs 3731, 3729, HO-108-3637, HO-108-3643, HO-108-5598, HO-108-3640, HO-108-3641, HO-108-3636, HO-108-3639, HO-108-19945, HO-108-5599, HO-108-3645, HO-108-3642, HO-108-3712, and HO-108-3663) located in the 200 North Area. (3729)	\$38,284.40	\$0.00	\$38,284.40	The Contractor completed this performance measure according to the established criteria.
PM-40-01.1d	9/30/2011	Disposition/Relocate locomotives and railcars (Rs 3731, 3729, HO-108-3637, HO-108-3643, HO-108-5598, HO-108-3640, HO-108-3641, HO-108-3636, HO-108-3639, HO-108-19945, HO-108-5599, HO-108-3645, HO-108-3642, HO-108-3712, and HO-108-3663) located in the 200 North Area. (3729)	\$38,284.40	\$0.00	\$38,284.40	The Contractor completed this performance measure according to the established criteria.
PM-40-01.1d	9/30/2011	Disposition/Relocate locomotives and railcars (Rs 3731, 3729, HO-108-3637, HO-108-3643, HO-108-5598, HO-108-3640, HO-108-3641, HO-108-3636, HO-108-3639, HO-108-19945, HO-108-5599, HO-108-3645, HO-108-3642, HO-108-3712, and HO-108-3663) located in the 200 North Area. (HO-108-3637)	\$38,284.40	\$0.00	\$38,284.40	The Contractor completed this performance measure according to the established criteria.

Performance Measure Identifier	Maximum Fee Date	Objective	Recovery Fee Allocated	FY11 Allocated Fee Forfeited	FY11 Incremental (Earned) Allocated Fee RECOVERY	Completion Comments
PM-40-01.1d	9/30/2011	Disposition/Relocate locomotives and railcars (HS 3731, 3729, HO-108-3637, HO-108-3643, HO-108-5598, HO-108-3640, HO-108-3641, HO-108-3636, HO-108-3639, HO-108-19945, HO-108-5599, HO-108-3645, HO-108-3642, HO-10H-3712, and HO-10H-3663) located in the 200 North Area. (HO-108-3643)	\$38,284.40	\$0.00	\$38,284.40	The Contractor completed this performance measure according to the established criteria.
PM-40-01.1d	9/30/2011	Disposition/Relocate locomotives and railcars (HS 3731, 3729, HO-108-3637, HO-108-3643, HO-108-5598, HO-108-3640, HO-108-3641, HO-108-3636, HO-108-3639, HO-108-19945, HO-108-5599, HO-108-3645, HO-108-3642, HO-10H-3712, and HO-10H-3663) located in the 200 North Area. (HO-108-5598)	\$38,284.40	\$0.00	\$38,284.40	The Contractor completed this performance measure according to the established criteria.
PM-40-01.1d	9/30/2011	Disposition/Relocate locomotives and railcars (HS 3731, 3729, HO-108-3637, HO-108-3643, HO-108-5598, HO-108-3640, HO-108-3641, HO-108-3636, HO-108-3639, HO-108-19945, HO-108-5599, HO-108-3645, HO-108-3642, HO-10H-3712, and HO-10H-3663) located in the 200 North Area. (HO-108-3640)	\$38,284.40	\$0.00	\$38,284.40	The Contractor completed this performance measure according to the established criteria.
PM-40-01.1d	9/30/2011	Disposition/Relocate locomotives and railcars (HS 3731, 3729, HO-108-3637, HO-108-3643, HO-108-5598, HO-108-3640, HO-108-3641, HO-108-3636, HO-108-3639, HO-108-19945, HO-108-5599, HO-108-3645, HO-108-3642, HO-10H-3712, and HO-10H-3663) located in the 200 North Area. (HO-108-3641)	\$38,284.40	\$0.00	\$38,284.40	The Contractor completed this performance measure according to the established criteria.
PM-40-01.1d	9/30/2011	Disposition/Relocate locomotives and railcars (HS 3731, 3729, HO-108-3637, HO-108-3643, HO-108-5598, HO-108-3640, HO-108-3641, HO-108-3636, HO-108-3639, HO-108-19945, HO-108-5599, HO-108-3645, HO-108-3642, HO-10H-3712, and HO-10H-3663) located in the 200 North Area. (HO-108-3636)	\$38,284.40	\$0.00	\$38,284.40	The Contractor completed this performance measure according to the established criteria.
PM-40-01.1d	9/30/2011	Disposition/Relocate locomotives and railcars (HS 3731, 3729, HO-108-3637, HO-108-3643, HO-108-5598, HO-108-3640, HO-108-3641, HO-108-3636, HO-108-3639, HO-108-19945, HO-108-5599, HO-108-3645, HO-108-3642, HO-10H-3712, and HO-10H-3663) located in the 200 North Area. (HO-108-3639)	\$38,284.40	\$0.00	\$38,284.40	The Contractor completed this performance measure according to the established criteria.
PM-40-01.1d	9/30/2011	Disposition/Relocate locomotives and railcars (HS 3731, 3729, HO-108-3637, HO-108-3643, HO-108-5598, HO-108-3640, HO-108-3641, HO-108-3636, HO-108-3639, HO-108-19945, HO-108-5599, HO-108-3645, HO-108-3642, HO-10H-3712, and HO-10H-3663) located in the 200 North Area. (HO-108-3637)	\$38,284.40	\$0.00	\$38,284.40	The Contractor completed this performance measure according to the established criteria.
PM-40-01.1d	9/30/2011	Disposition/Relocate locomotives and railcars (HS 3731, 3729, HO-108-3637, HO-108-3643, HO-108-5598, HO-108-3640, HO-108-3641, HO-108-3636, HO-108-3639, HO-108-19945, HO-108-5599, HO-108-3645, HO-108-3642, HO-10H-3712, and HO-10H-3663) located in the 200 North Area. (HO-108-5599)	\$38,284.40	\$0.00	\$38,284.40	The Contractor completed this performance measure according to the established criteria.

Performance Measure Identifier	Maximum Fee Date	Objective	Recovery Fee Allocated	FY11 Allocated Fee Forfeited	FY11 Incremental (Earned) Allocated Fee RECOVERY	Completion Comments
PM-40-01.1d	9/30/2011	Disposition/Relocate locomotives and railcars (HS 3731, 3729, HO-108-3637, HO-108-3643, HO-108-5598, HO-108-3640, HO-108-3641, HO-108-3636, HO-108-3639, HO-108-19945, HO-108-5599, HO-108-3645, HO-108-3642, HO-108-3712, and HO-108-3663) located in the 200 North Area. (HO-108-3645)	\$38,284.40	\$0.00	\$38,284.40	The Contractor completed this performance measure according to the established criteria.
PM-40-01.1d	9/30/2011	Disposition/Relocate locomotives and railcars (HS 3731, 3729, HO-108-3637, HO-108-3643, HO-108-5598, HO-108-3640, HO-108-3641, HO-108-3636, HO-108-3639, HO-108-19945, HO-108-5599, HO-108-3645, HO-108-3642, HO-108-3712, and HO-108-3663) located in the 200 North Area. (HO-108-3642)	\$38,284.40	\$0.00	\$38,284.40	The Contractor completed this performance measure according to the established criteria.
PM-40-01.1d	9/30/2011	Disposition/Relocate locomotives and railcars (HS 3731, 3729, HO-108-3637, HO-108-3643, HO-108-5598, HO-108-3640, HO-108-3641, HO-108-3636, HO-108-3639, HO-108-19945, HO-108-5599, HO-108-3645, HO-108-3642, HO-108-3712, and HO-108-3663) located in the 200 North Area. (HO-108-3712)	\$38,284.40	\$0.00	\$38,284.40	The Contractor completed this performance measure according to the established criteria.
PM-40-01.1d	9/10/2011	Disposition/Relocate locomotives and railcars (HS 3731, 3729, HO-108-3637, HO-108-3643, HO-108-5598, HO-108-3640, HO-108-3641, HO-108-3636, HO-108-3639, HO-108-19945, HO-108-5599, HO-108-3645, HO-108-3642, HO-108-3712, and HO-108-3663) located in the 200 North Area. (HO-108-3663)	\$38,284.40	\$0.00	\$38,284.40	The Contractor completed this performance measure according to the established criteria.
PM-40-02.1		In support of the 2015 Hanford Site Cleanup Vision Initiative to significantly reduce the active site footprint of cleanup—reduce the Central Plateau footprint to the industrial exclusive area defined under the Comprehensive Land Use Plan.				
PM-40-02.1b (1st inc of remediation)	9/30/2011	Complete MG-1 site remediation for the 48 waste sites in the Outer Area, defined under the Hanford Site Cleanup Completion Frame work and Central Plateau Cleanup Completion Strategy.	\$304,369.59	\$0.00	\$304,369.59	The Contractor completed this performance measure according to the established criteria.
PM-40-02.1b (2nd inc of remediation)	9/30/2011	Complete MG-1 site remediation for the 48 waste sites in the Outer Area, defined under the Hanford Site Cleanup Completion Frame work and Central Plateau Cleanup Completion Strategy.	\$304,369.59	\$0.00	\$304,369.59	The Contractor completed this performance measure according to the established criteria.
PM-40-02.1b (3rd inc of remediation)	9/30/2011	Complete MG-1 site remediation for the 48 waste sites in the Outer Area, defined under the Hanford Site Cleanup Completion Frame work and Central Plateau Cleanup Completion Strategy.	\$304,369.59	\$0.00	\$304,369.59	The Contractor completed this performance measure according to the established criteria.
PM-40-02.1b (4th inc of remediation)	9/30/2011	Complete MG-1 site remediation for the 48 waste sites in the Outer Area, defined under the Hanford Site Cleanup Completion Frame work and Central Plateau Cleanup Completion Strategy.	\$304,369.59	\$0.00	\$304,369.59	The Contractor completed this performance measure according to the established criteria.
PM-40-02.1b (5th inc of remediation)	9/30/2011	Complete MG-1 site remediation for the 48 waste sites in the Outer Area, defined under the Hanford Site Cleanup Completion Frame work and Central Plateau Cleanup Completion Strategy.	\$0.00	\$0.00	\$0.00	This work was not funded with Recovery Act and therefore should not have been assigned Recovery Act fee. Assigned fee was returned to the Recovery Act pool for distribution to Recovery Act workspace.

FY 2011 ARRA Fee Reconciliation Table

Performance Measure Identifier	Maximum Fee Date	Objective	Recovery Fee Allocated	FY11 Allocated Fee Forfeited	FY11 Incremental (Earned) Allocated Fee RECOVERY	Completion Comments
PM-40-02.1b (6th Inc of remediation)	9/30/2011	Complete MG-1 site remediation for the 48 waste sites in the Outer Area, defined under the Hanford Site Cleanup Completion Frame work and Central Plateau Cleanup Completion Strategy.	\$0.00	\$0.00	\$0.00	This work was not funded with Recovery Act and therefore should not have been assigned Recovery Act fee. Assigned fee was returned to the Recovery Act pool for distribution to Recovery Act workspace.
PM-40-02.1b (7th Inc of remediation)	9/30/2011	Complete MG-1 site remediation for the 48 waste sites in the Outer Area, defined under the Hanford Site Cleanup Completion Frame work and Central Plateau Cleanup Completion Strategy.	\$0.00	\$0.00	\$0.00	This work was not funded with Recovery Act and therefore should not have been assigned Recovery Act fee. Assigned fee was returned to the Recovery Act pool for distribution to Recovery Act workspace.
PM-40-02.1b (8th Inc of remediation)	9/30/2011	Complete MG-1 site remediation for the 48 waste sites in the Outer Area, defined under the Hanford Site Cleanup Completion Frame work and Central Plateau Cleanup Completion Strategy.	\$0.00	\$0.00	\$0.00	This work was not funded with Recovery Act and therefore should not have been assigned Recovery Act fee. Assigned fee was returned to the Recovery Act pool for distribution to Recovery Act workspace.
PM-40-02.1b (1st Inc of RARs)	9/30/2011	Complete MG-1 site remediation for the 48 waste sites in the Outer Area, defined under the Hanford Site Cleanup Completion Frame work and Central Plateau Cleanup Completion Strategy.	\$33,818.84	\$0.00	\$33,818.84	The Contractor completed this performance measure according to the established criteria.
PM-40-02.1b (2nd Inc of RARs)	9/30/2011	Complete MG-1 site remediation for the 48 waste sites in the Outer Area, defined under the Hanford Site Cleanup Completion Frame work and Central Plateau Cleanup Completion Strategy.	\$33,818.84	\$0.00	\$33,818.84	The Contractor completed this performance measure according to the established criteria.
PM-40-02.1b (3rd Inc of RARs)	9/30/2011	Complete MG-1 site remediation for the 48 waste sites in the Outer Area, defined under the Hanford Site Cleanup Completion Frame work and Central Plateau Cleanup Completion Strategy.	\$33,818.84	\$0.00	\$33,818.84	The Contractor completed this performance measure according to the established criteria.
PM-40-02.1b (4th Inc of RARs)	9/30/2011	Complete MG-1 site remediation for the 48 waste sites in the Outer Area, defined under the Hanford Site Cleanup Completion Frame work and Central Plateau Cleanup Completion Strategy.	\$33,818.84	\$0.00	\$33,818.84	The Contractor completed this performance measure according to the established criteria.
PM-40-02.1b (5th Inc of RARs)	9/30/2011	Complete MG-1 site remediation for the 48 waste sites in the Outer Area, defined under the Hanford Site Cleanup Completion Frame work and Central Plateau Cleanup Completion Strategy.	\$0.00	\$0.00	\$0.00	This work was not funded with Recovery Act and therefore should not have been assigned Recovery Act fee. Assigned fee was returned to the Recovery Act pool for distribution to Recovery Act workspace.
PM-40-02.1b (6th Inc of RARs)	9/30/2011	Complete MG-1 site remediation for the 48 waste sites in the Outer Area, defined under the Hanford Site Cleanup Completion Frame work and Central Plateau Cleanup Completion Strategy.	\$0.00	\$0.00	\$0.00	This work was not funded with Recovery Act and therefore should not have been assigned Recovery Act fee. Assigned fee was returned to the Recovery Act pool for distribution to Recovery Act workspace.
PM-40-02.1b (7th Inc of RARs)	9/30/2011	Complete MG-1 site remediation for the 48 waste sites in the Outer Area, defined under the Hanford Site Cleanup Completion Frame work and Central Plateau Cleanup Completion Strategy.	\$0.00	\$0.00	\$0.00	This work was not funded with Recovery Act and therefore should not have been assigned Recovery Act fee. Assigned fee was returned to the Recovery Act pool for distribution to Recovery Act workspace.
PM-40-02.1b (8th Inc of RARs)	9/30/2011	Complete MG-1 site remediation for the 48 waste sites in the Outer Area, defined under the Hanford Site Cleanup Completion Frame work and Central Plateau Cleanup Completion Strategy.	\$0.00	\$0.00	\$0.00	This work was not funded with Recovery Act and therefore should not have been assigned Recovery Act fee. Assigned fee was returned to the Recovery Act pool for distribution to Recovery Act workspace.
PM-40.04.1		In support of the 2015 Hanford Site Cleanup Vision Initiative to conduct additional cleanup as funds become available—complete closure of the U-Plant Canyon.				
PM-40.04.1a		Demolish and dispose U-Plant Auxiliary Facilities (203-UX, 213-U, 211-U, 224-U, and 226-U).				
PM-40.04.1a.1		Demolish and dispose U-Plant Auxiliary Facilities 211-U and 211-U.				

Performance Measure Identifier	Maximum Fee Date	Objective	Recovery Fee Allocated	FY11 Allocated Fee Forfeited	FY11 Incremental (Earned) Allocated Fee RECOVERY	Completion Comments
PM-40-04-1a 1(b)	9/30/2011	Complete administrative closure for U-Plant Ancillary Facilities 211-U and 211-UA	\$100,000.00	\$0.00	\$100,000.00	The Contractor completed this performance measure according to the established criteria.
PM-40-04-1a 2		Remove U-Plant Ancillary Facilities 203-UX, 224-U, and 224-UA.				
PM-40-04-1a 2(a)	9/30/2011	Demolish and dispose U-Plant Ancillary Facilities 203-UX, 224-U, and 224-UA in accordance with the U-Plant Ancillary Facilities Removal Action Work Plan.	\$1,105,534.13	\$0.00	\$1,105,534.13	The Contractor completed this performance measure according to the established criteria.
PM-40-04-1a 2(b)	9/30/2011	Complete administrative closure of U-Plant Ancillary Facilities 203-UX, 224-U, and 224-UA	\$100,000.00	\$0.00	\$100,000.00	The Contractor completed this performance measure according to the established criteria.
PM-40-04-1b		Complete demolition of the U-Plant Canyon (U-221)				
PM-40-04-1b 2	9/30/2011	Complete Cell 30 tank content removal or stabilization.	\$916,997.00	\$0.00	\$916,997.00	The Contractor completed this performance measure according to the established criteria.
PM-40-04-1b 3	9/30/2011	Complete canyon deck equipment removal, equipment site reduction, and equipment relocation to support cell filling preparation.	\$1,088,934.00	\$0.00	\$1,088,934.00	The Contractor completed this performance measure according to the established criteria.
PM-40-04-1b 4	9/30/2011	Complete filling of all U-Plant (221-U) void spaces.	\$1,676,088.00	\$0.00	\$1,676,088.00	The Contractor completed this performance measure according to the established criteria.
PM-40-45.1		Initiative to conduct additional cleanup as funds become available—disposition structures, decommission wells and dispose of debris in the Outer Areas.				
PM-40-05-1a	9/30/2011	Complete the disposition of structures 646, 6652S, 6652R, 6652G, 6652H, 6652I, 6652J, 6652L, 6652M, 6652C, 6652C, 6652E, 6652F, 6652G, 6652H, 6652I, 6652J, 6652K, 6652L, 6652M, 6652N, 6652O, 6652P, 6652Q, 6652R, 6652S, 6652T, 6652U, 6652V, 6652W, 6652X, 6652Y, 6652Z, 6652AA, 6652AB, 6652AC, 6652AD, 6652AE, 6652AF, 6652AG, 6652AH, 6652AI, 6652AJ, 6652AK, 6652AL, 6652AM, 6652AN, 6652AO, 6652AP, 6652AQ, 6652AR, 6652AS, 6652AT, 6652AU, 6652AV, 6652AW, 6652AX, 6652AY, 6652AZ, 6652BA, 6652BB, 6652BC, 6652BD, 6652BE, 6652BF, 6652BG, 6652BH, 6652BI, 6652BJ, 6652BK, 6652BL, 6652BM, 6652BN, 6652BO, 6652BP, 6652BQ, 6652BR, 6652BS, 6652BT, 6652BU, 6652BV, 6652BW, 6652BX, 6652BY, 6652BZ, 6652CA, 6652CB, 6652CC, 6652CD, 6652CE, 6652CF, 6652CG, 6652CH, 6652CI, 6652CJ, 6652CK, 6652CL, 6652CM, 6652CN, 6652CO, 6652CP, 6652CQ, 6652CR, 6652CS, 6652CT, 6652CU, 6652CV, 6652CW, 6652CX, 6652CY, 6652CZ, 6652DA, 6652DB, 6652DC, 6652DD, 6652DE, 6652DF, 6652DG, 6652DH, 6652DI, 6652DJ, 6652DK, 6652DL, 6652DM, 6652DN, 6652DO, 6652DP, 6652DQ, 6652DR, 6652DS, 6652DT, 6652DU, 6652DV, 6652DW, 6652DX, 6652DY, 6652DZ, 6652EA, 6652EB, 6652EC, 6652ED, 6652EE, 6652EF, 6652EG, 6652EH, 6652EI, 6652EJ, 6652EK, 6652EL, 6652EM, 6652EN, 6652EO, 6652EP, 6652EQ, 6652ER, 6652ES, 6652ET, 6652EU, 6652EV, 6652EW, 6652EX, 6652EY, 6652EZ, 6652FA, 6652FB, 6652FC, 6652FD, 6652FE, 6652FF, 6652FG, 6652FH, 6652FI, 6652FJ, 6652FK, 6652FL, 6652FM, 6652FN, 6652FO, 6652FP, 6652FQ, 6652FR, 6652FS, 6652FT, 6652FU, 6652FV, 6652FW, 6652FX, 6652FY, 6652FZ, 6652GA, 6652GB, 6652GC, 6652GD, 6652GE, 6652GF, 6652GG, 6652GH, 6652GI, 6652GJ, 6652GK, 6652GL, 6652GM, 6652GN, 6652GO, 6652GP, 6652GQ, 6652GR, 6652GS, 6652GT, 6652GU, 6652GV, 6652GW, 6652GX, 6652GY, 6652GZ, 6652HA, 6652HB, 6652HC, 6652HD, 6652HE, 6652HF, 6652HG, 6652HH, 6652HI, 6652HJ, 6652HK, 6652HL, 6652HM, 6652HN, 6652HO, 6652HP, 6652HQ, 6652HR, 6652HS, 6652HT, 6652HU, 6652HV, 6652HW, 6652HX, 6652HY, 6652HZ, 6652IA, 6652IB, 6652IC, 6652ID, 6652IE, 6652IF, 6652IG, 6652IH, 6652II, 6652IJ, 6652IK, 6652IL, 6652IM, 6652IN, 6652IO, 6652IP, 6652IQ, 6652IR, 6652IS, 6652IT, 6652IU, 6652IV, 6652IW, 6652IX, 6652IY, 6652IZ, 6652JA, 6652JB, 6652JC, 6652JD, 6652JE, 6652JF, 6652JG, 6652JH, 6652JI, 6652JJ, 6652JK, 6652JL, 6652JM, 6652JN, 6652JO, 6652JP, 6652JQ, 6652JR, 6652JS, 6652JT, 6652JU, 6652JV, 6652JW, 6652JX, 6652JY, 6652JZ, 6652KA, 6652KB, 6652KC, 6652KD, 6652KE, 6652KF, 6652KG, 6652KH, 6652KI, 6652KJ, 6652KK, 6652KL, 6652KM, 6652KN, 6652KO, 6652KP, 6652KQ, 6652KR, 6652KS, 6652KT, 6652KU, 6652KV, 6652KW, 6652KX, 6652KY, 6652KZ, 6652LA, 6652LB, 6652LC, 6652LD, 6652LE, 6652LF, 6652LG, 6652LH, 6652LI, 6652LJ, 6652LK, 6652LL, 6652LM, 6652LN, 6652LO, 6652LP, 6652LQ, 6652LR, 6652LS, 6652LT, 6652LU, 6652LV, 6652LW, 6652LX, 6652LY, 6652LZ, 6652MA, 6652MB, 6652MC, 6652MD, 6652ME, 6652MF, 6652MG, 6652MH, 6652MI, 6652MJ, 6652MK, 6652ML, 6652MN, 6652MO, 6652MP, 6652MQ, 6652MR, 6652MS, 6652MT, 6652MU, 6652MV, 6652MW, 6652MX, 6652MY, 6652MZ, 6652NA, 6652NB, 6652NC, 6652ND, 6652NE, 6652NF, 6652NG, 6652NH, 6652NI, 6652NJ, 6652NK, 6652NL, 6652NM, 6652NN, 6652NO, 6652NP, 6652NQ, 6652NR, 6652NS, 6652NT, 6652NU, 6652NV, 6652NW, 6652NX, 6652NY, 6652NZ, 6652OA, 6652OB, 6652OC, 6652OD, 6652OE, 6652OF, 6652OG, 6652OH, 6652OI, 6652OJ, 6652OK, 6652OL, 6652OM, 6652ON, 6652OO, 6652OP, 6652OQ, 6652OR, 6652OS, 6652OT, 6652OU, 6652OV, 6652OW, 6652OX, 6652OY, 6652OZ, 6652PA, 6652PB, 6652PC, 6				

FY 2011 ARRA Fee Reconciliation Table

Performance Measure Identifier	Maximum Fee Date	Objective	Recovery Fee Allocated	FY11 Allocated Fee Forfeited	FY11 Incremental (Earned) Allocated Fee RECOVERY	Completion Comments
PM-40-06.1b (North Slope Unit)	9/30/2011	Complete the disposition of former military compounds, decommission wells no longer in use, and dispose of materials from the miscellaneous debris sites in the following Hanford Reach National Monument (HRNM) area management units: the McGee Ranch/Riverlands Area Unit; the Verita Bridge Unit; and the North Slope Unit (Saddle Mountain Unit and Wahluke Unit).	\$114,624.66	\$0.00	\$114,624.66	The Contractor completed this performance measure according to the established criteria.
PM-40-06.1		In support of the 2015 Hanford Site Cleanup Vision Initiative to conduct additional cleanup as funds become available - Complete closure of the NRDWL/BC Central Zone.				
PM-40-06.1a	9/30/2011	Complete Comprehensive Environmental Response, Compensation, and Liability Act of 1980 (CERCLA) removal actions for contaminated soil cleanup of the northern part of the BC Controlled Area (BCCA) in the Central Plateau Outer Area, as defined in the Hanford Site Cleanup Completion Framework and the Central Plateau Cleanup Completion Strategy. • 50% of the fee allocated against Performance Objective 1a may be earned for completion of CERCLA removal action of contaminated soil cleanup Zone A in the northern BCCA on or before September 30, 2011	\$275,099.00	\$0.00	\$275,099.00	The Contractor completed this performance measure according to the established criteria.
PM-40-06.1a	9/30/2011	Complete Comprehensive Environmental Response, Compensation, and Liability Act of 1980 (CERCLA) removal actions for contaminated soil cleanup of the northern part of the BC Controlled Area (BCCA) in the Central Plateau Outer Area, as defined in the Hanford Site Cleanup Completion Framework and the Central Plateau Cleanup Completion Strategy. • 25% of the fee allocated against Performance Objective 1a may be earned for submitting and receiving DOE and Regulator approval of the Response Action Completion Report (RACR) for Zone A on or before September 30, 2011	\$137,549.50	\$0.00	\$137,549.50	The Contractor completed this performance measure according to the established criteria.
PM-40-06.1a	9/30/2011	Complete Comprehensive Environmental Response, Compensation, and Liability Act of 1980 (CERCLA) removal actions for contaminated soil cleanup of the northern part of the BC Controlled Area (BCCA) in the Central Plateau Outer Area, as defined in the Hanford Site Cleanup Completion Framework and the Central Plateau Cleanup Completion Strategy. • 15% of the fee allocated against Performance Objective 1a may be earned for completion of CERCLA removal action of contaminated soil cleanup Zone B in the northern BCCA, on or before September 30, 2011.	\$82,529.70	\$0.00	\$82,529.70	

FY 2011 ARRA Fee Reconciliation Table

Performance Measure Identifier	Maximum Fee Date	Objective	Recovery Fee Allocated	PY11 Allocated Fee Forfeited	PY11 Incremental (Earned) Allocated Fee RECOVERY	Completion Comments
PM-40-06.1a	9/30/2011	Complete Comprehensive Environmental Response, Compensation, and Liability Act of 1980 (CERCLA) removal actions for contaminated soil cleanup of the northern part of the BC Controlled Area (BECA) in the Central Plateau Outer Area, as defined in the Hanford Site Cleanup Completion Framework and the Central Plateau Cleanup Completion Strategy. • 10% of the fee allocated against Performance Objective 1a may be earned for submitting and receiving DOE and Regulator approval of the Response Action Completion Report (RACR) for Zone B on or before September 30, 2011.	\$55,019.80	\$0.00	\$55,019.80	The Contractor completed this performance measure according to the established criteria.
PM-40-07.1		In support of the 2015 Hanford Site Cleanup Vision Initiative to conduct additional cleanup as funds become available — Complete closure of the Semi Works Zone.				
PM-40-07.1a	9/30/2011	Complete 209-E nuclear facility hazard reduction and dewatering to less than Hazard Category 3.	\$149,012.00	\$74,506.00	\$74,506.00	50% of the allocated fee is not earned for completion after the scheduled date.
PM-40-07.1b	9/30/2011	Complete disposition of 209-E and the ventilation system including (296-P-31 stack) in accordance with applicable requirements.	\$94,309.00	\$48,154.50	\$48,154.50	50% of the allocated fee is not earned for completion after the scheduled date.
PM-40-08.1		In support of the 2015 Hanford Site Cleanup Vision Initiative to conduct additional cleanup as funds become available — disposition structures in the 200 Areas.				

Performance Measure Identifier	Maximum Fee Date	Objective	Recovery Fee Allocated	FY11 Allocated Fee Forfeited	FY11 Incremental (Earned) Allocated Fee RECOVERY	Completion Comments
PM-40-08.1a	9/30/2011	Complete disposition of structures MO-104, MO-840, 284-E, 272-E, 273-E, 2734-EA, 2701-M, MO-405, 284-W, 284-WB (MO-104, MO-840, MO-405) • 20% of the fee allocated against the Performance Objectives may be earned for demolition of MO-104, MO-840, MO-405 and disposal of all rubble waste and other material produced through the demolition activities on or before September 30, 2011.	\$229,249.20	\$0.00	\$229,249.20	The Contractor completed this performance measure according to the established criteria.
PM-40-08.1a	9/30/2011	Complete disposition of structures MO-104, MO-840, 284-E, 272-E, 273-E, 2734-EA, 2701-M, MO-405, 284-W, 284-WB, 272-E, 273-E, 2734-EA, and 2701-M) • 20% of the fee allocated against the Performance Objectives may be earned for demolition of 272-E, 273-E, 2734-EA, and 2701-M and disposal of all rubble waste and other material produced through the demolition activities on or before September 30, 2011.	\$229,249.20	\$0.00	\$229,249.20	The Contractor completed this performance measure according to the established criteria.
PM-40-08.1a	9/30/2011	Complete disposition of structures MO-104, MO-840, 284-E, 272-E, 273-E, 2734-EA, 2701-M, MO-405, 284-W, 284-WB, 284-W, 284-WB and 284-E) • 60% of the fee allocated against the Performance Objectives may be earned for demolition of 284-W, 284-WB and 284-E and disposal of all rubble waste and other material produced through the demolition activities on or before September 30, 2011.	\$687,747.60	\$0.00	\$687,747.60	The Contractor completed this performance measure according to the established criteria.
RL-40 Sub Total		Complete demolition of structures in the 100-K Area	\$12,012,205.40	\$561,660.50	\$11,450,545.30	
PM-41-02.1a (115KE)	9/30/2011	Complete demolition of 115KE, 116KE, 117KE, 118KE, 183.1KW, 183.2KW, 183.3KW, 183.4KW and 183.7KW	\$150,000.00	\$0.00	\$150,000.00	The Contractor completed this performance measure according to the established criteria.
PM-41-02.1a (116KE)	9/30/2011	Complete demolition of 115KE, 116KE, 117KE, 118KE, 183.1KW, 183.2KW, 183.3KW, 183.4KW and 183.7KW	\$15,000.00	\$0.00	\$25,000.00	The Contractor completed this performance measure according to the established criteria.
PM-41-02.1a (117KE)	9/30/2011	Complete demolition of 115KE, 116KE, 117KE, 118KE, 183.1KW, 183.2KW, 183.3KW, 183.4KW and 183.7KW	\$100,000.00	\$0.00	\$100,000.00	The Contractor completed this performance measure according to the established criteria.
PM-41-02.1a (118KE)	9/30/2011	Complete demolition of 115KE, 116KE, 117KE, 118KE, 183.1KW, 183.2KW, 183.3KW, 183.4KW and 183.7KW	\$5,000.00	\$0.00	\$5,000.00	The Contractor completed this performance measure according to the established criteria.
PM-41-02.1a (183.1KW)	9/30/2011	Complete demolition of 115KE, 116KE, 117KE, 118KE, 183.1KW, 183.2KW, 183.3KW, 183.4KW and 183.7KW	\$100,000.00	\$0.00	\$100,000.00	The Contractor completed this performance measure according to the established criteria.
PM-41-02.1a (183.2KW)	9/30/2011	Complete demolition of 115KE, 116KE, 117KE, 118KE, 183.1KW, 183.2KW, 183.3KW, 183.4KW and 183.7KW	\$200,000.00	\$0.00	\$200,000.00	The Contractor completed this performance measure according to the established criteria.

Performance Measure Identifier	Maximum Fee Date	Objective	Recovery Fee Allocated	FY11 Allocated Fee Forfeited	FY11 Incremental (Earned) Allocated Fee RECOVERY	Completion Comments
PM-41-02.1a (183.3KW)	9/30/2011	Complete demolition of 115KE, 116KE, 117KE, 118KE, 183.1KW, 183.2KW, 183.3KW, 183.4KW and 183.7KW.	\$100,000.00	\$0.00	\$100,000.00	The Contractor completed this performance measure according to the established criteria.
PM-41-02.1a (183.4KW)	9/30/2011	Complete demolition of 115KE, 116KE, 117KE, 118KE, 183.1KW, 183.2KW, 183.3KW, 183.4KW and 183.7KW.	\$100,000.00	\$0.00	\$100,000.00	The Contractor completed this performance measure according to the established criteria.
PM-41-02.1a (183.7KW)	9/30/2011	Complete demolition of 115KE, 116KE, 117KE, 118KE, 183.1KW, 183.2KW, 183.3KW, 183.4KW and 183.7KW.	\$75,000.00	\$0.00	\$75,000.00	The Contractor completed this performance measure according to the established criteria.
PM-41-02.1b	9/30/2011	Complete demolition of 115KE, 116KE, 117KE, 118KE, 183.1KW, 183.2KW, 183.3KW, 183.4KW and 183.7KW structures inside the perimeter fence at 100 K Area.	\$1,000,000.00	\$0.00	\$1,000,000.00	The Contractor completed this performance measure according to the established criteria.
PM-41-02.1c (183.1KE)	9/30/2011	Complete demolition of 110KE, 181KE, 183.1KE, 190KE, 190KW, 1605KE, MO048 and MO969 structures inside the perimeter fence at 100 K Area.	\$300,000.00	\$0.00	\$300,000.00	The Contractor completed this performance measure according to the established criteria.
PM-41-02.1c (183.1KE)	9/30/2011	Complete demolition of 110KE, 181KE, 183.1KE, 190KE, 190KW, 1605KE, MO048 and MO969 structures inside the perimeter fence at 100 K Area.	\$100,000.00	\$0.00	\$100,000.00	The Contractor completed this performance measure according to the established criteria.
PM-41-02.1c (183.4KE)	9/30/2011	Complete demolition of 110KE, 181KE, 183.1KE, 190KE, 190KW, 1605KE, MO048 and MO969 structures inside the perimeter fence at 100 K Area.	\$150,000.00	\$0.00	\$150,000.00	The Contractor completed this performance measure according to the established criteria.
PM-41-02.1c (190KW)	9/30/2011	Complete demolition of 110KE, 181KE, 183.1KE, 190KE, 190KW, 1605KE, MO048 and MO969 structures inside the perimeter fence at 100 K Area.	\$150,000.00	\$0.00	\$150,000.00	The Contractor completed this performance measure according to the established criteria.
PM-41-02.1c (190KE)	9/30/2011	Complete demolition of 110KE, 181KE, 183.1KE, 190KE, 190KW, 1605KE, MO048 and MO969 structures inside the perimeter fence at 100 K Area.	\$150,000.00	\$0.00	\$150,000.00	The Contractor completed this performance measure according to the established criteria.
PM-41-02.1d (Final Payment)	9/30/2011	Complete demolition of 110KE, 181KE, 183.1KE, 190KE, 190KW, 1605KE, MO048 and MO969 structures inside the perimeter fence at 100 K Area.	\$1,000,000.00	\$0.00	\$1,000,000.00	The Contractor completed this performance measure according to the established criteria.
PM-41-02.2		COMPLETE REMEDIATION OF WASTE SITES IN THE 100-K AREA.				
PM-41-02.2a (100-K-3)	9/30/2011	Complete remediation of 100-K-3, 100-K-42, 100-K-47, 100-K-71, 116-KE-1, and 116-KE-3 waste sites inside the perimeter fence at 100 K Area.	\$25,000.00	\$0.00	\$25,000.00	The Contractor completed this performance measure according to the established criteria.
PM-41-02.2a (100-K-42)	9/30/2011	Complete remediation of 100-K-3, 100-K-42, 100-K-47, 100-K-71, 116-KE-1, and 116-KE-3 waste sites inside the perimeter fence at 100 K Area.	\$150,000.00	\$0.00	\$150,000.00	The Contractor completed this performance measure according to the established criteria.
PM-41-02.2a (100-K-47)	9/30/2011	Complete remediation of 100-K-3, 100-K-42, 100-K-47, 100-K-71, 116-KE-1, and 116-KE-3 waste sites inside the perimeter fence at 100 K Area.	\$50,000.00	\$0.00	\$50,000.00	The Contractor completed this performance measure according to the established criteria.
PM-41-02.2a (116-KE-1)	9/30/2011	Complete remediation of 100-K-3, 100-K-42, 100-K-47, 100-K-71, 116-KE-1, and 116-KE-3 waste sites inside the perimeter fence at 100 K Area.	\$25,000.00	\$0.00	\$25,000.00	The Contractor completed this performance measure according to the established criteria.
PM-41-02.2a (116-KE-3)	9/30/2011	Complete remediation of 100-K-3, 100-K-42, 100-K-47, 100-K-71, 116-KE-1, and 116-KE-3 waste sites inside the perimeter fence at 100 K Area.	\$25,000.00	\$0.00	\$25,000.00	The Contractor completed this performance measure according to the established criteria.

FY 2011 ARRA Fee Reconciliation Table

Performance Measure Identifier	Maximum Fee Date	Objective	Recovery Fee Allocated	FY11 Allocated Fee Forfeited	FY11 Incremental (Earned) Allocated Fee RECOVERY	Completion Comments
PM-41-02-7b	9/30/2011	Complete remediation of 100-K-3, 100-K-42, 100-K-47, 100-K-71, 116-KE-1, and 116-KE-3 waste sites inside the perimeter fence at 100 K Area	\$300,000.00	\$0.00	\$300,000.00	The Contractor completed this performance measure according to the established criteria.
PM-41-02-2c	9/30/2011	Complete remediation of 100-K-3	\$71,112.00	\$0.00	\$71,112.00	The Contractor completed this performance measure according to the established criteria.
PM-41-02-2c	9/30/2011	Complete remediation of 100-K-18	\$5,000.00	\$0.00	\$5,000.00	The Contractor completed this performance measure according to the established criteria.
PM-41-02-2c	9/30/2011	Complete remediation of 100-K-34	\$5,000.00	\$0.00	\$5,000.00	The Contractor completed this performance measure according to the established criteria.
PM-41-02-2c	9/30/2011	Complete remediation of 100-K-53	\$150,000.00	\$0.00	\$150,000.00	The Contractor completed this performance measure according to the established criteria.
PM-41-02-2c	9/30/2011	Complete remediation of 100-K-55 Part 1	\$300,000.00	\$0.00	\$300,000.00	The Contractor completed this performance measure according to the established criteria.
PM-41-02-2c	9/30/2011	Complete remediation of 100-K-56 Part 1	\$300,000.00	\$0.00	\$300,000.00	The Contractor completed this performance measure according to the established criteria.
PM-41-02-2c	9/30/2011	Complete remediation of 100-K-57	\$100,000.00	\$0.00	\$100,000.00	This waste site was not completed due to other waste sites exceeding planned remediation volumes. Accordingly, the fee is not forfeited but is paid in consideration for the additional volume necessary to complete initiated sites.
PM-41-02-2c	9/30/2011	Complete remediation of 100-K-63	\$250,000.00	\$0.00	\$250,000.00	The Contractor completed this performance measure according to the established criteria.
PM-41-02-2c	9/30/2011	Complete remediation of 100-K-64	\$750,000.00	\$0.00	\$750,000.00	This waste site was not completed due to other waste sites exceeding planned remediation volumes. Accordingly, the fee is not forfeited but is paid in consideration for the additional volume necessary to complete initiated sites.
PM-41-02-2c	9/30/2011	Complete remediation of 100-K-68	\$100,000.00	\$0.00	\$100,000.00	The Contractor completed this performance measure according to the established criteria.
PM-41-02-2c	9/30/2011	Complete remediation of 100-K-69	\$10,000.00	\$0.00	\$10,000.00	The Contractor completed this performance measure according to the established criteria.
PM-41-02-2c	9/30/2011	Complete remediation of 100-K-70	\$25,000.00	\$0.00	\$25,000.00	The Contractor completed this performance measure according to the established criteria.
PM-41-02-2c	9/30/2011	Complete remediation of 100-K-77	\$5,000.00	\$0.00	\$5,000.00	The Contractor completed this performance measure according to the established criteria.
PM-41-02-2c	9/30/2011	Complete remediation of 100-K-102	\$50,000.00	\$0.00	\$50,000.00	The Contractor completed this performance measure according to the established criteria.
PM-41-02-2c	9/30/2011	Complete remediation of 116-KE-7	\$550,000.00	\$0.00	\$550,000.00	This waste site was not completed due to other waste sites exceeding planned remediation volumes. Accordingly, the fee is not forfeited but is paid in consideration for the additional volume necessary to complete initiated sites.
PM-41-02-2c	9/30/2011	Complete remediation of 120-KW-1	\$10,000.00	\$0.00	\$10,000.00	The Contractor completed this performance measure according to the established criteria.
PM-41-02-2c	9/30/2011	Complete remediation of 120-KW-2	\$30,000.00	\$0.00	\$30,000.00	The Contractor completed this performance measure according to the established criteria.
PM-41-02-2c	9/30/2011	Complete remediation of 160-K-3	\$1,000.00	\$0.00	\$1,000.00	The Contractor completed this performance measure according to the established criteria.
PM-41-02-2c	9/30/2011	Complete remediation of 100-K-6	\$1,000.00	\$0.00	\$1,000.00	The Contractor completed this performance measure according to the established criteria.
PM-41-02-2c	9/30/2011	Complete remediation of 100-K-19	\$1,000.00	\$0.00	\$1,000.00	The Contractor completed this performance measure according to the established criteria.
PM-41-02-2c	9/30/2011	Complete remediation of 100-K-36	\$1,000.00	\$0.00	\$1,000.00	The Contractor completed this performance measure according to the established criteria.
PM-41-02-2c	9/30/2011	Complete remediation of 100-K-37	\$1,000.00	\$0.00	\$1,000.00	The Contractor completed this performance measure according to the established criteria.
PM-41-02-2c	9/30/2011	Complete remediation of 100-K-38	\$1,000.00	\$0.00	\$1,000.00	The Contractor completed this performance measure according to the established criteria.
PM-41-02-2c	9/30/2011	Complete remediation of 100-K-46	\$1,000.00	\$0.00	\$1,000.00	The Contractor completed this performance measure according to the established criteria.
PM-41-02-2c	9/30/2011	Complete remediation of 100-K-62	\$1,000.00	\$0.00	\$1,000.00	The Contractor completed this performance measure according to the established criteria.
PM-41-02-2c	9/30/2011	Complete remediation of 100-K-79	\$1,000.00	\$0.00	\$1,000.00	The Contractor completed this performance measure according to the established criteria.
PM-41-02-2c	9/30/2011	Complete remediation of 100-K-83	\$1,000.00	\$0.00	\$1,000.00	The Contractor completed this performance measure according to the established criteria.
PM-41-02-2c	9/30/2011	Complete remediation of 116-KE-6A	\$1,000.00	\$0.00	\$1,000.00	The Contractor completed this performance measure according to the established criteria.
PM-41-02-2c	9/30/2011	Complete remediation of 116-KE-6B	\$1,000.00	\$0.00	\$1,000.00	The Contractor completed this performance measure according to the established criteria.
PM-41-02-2c	9/30/2011	Complete remediation of 116-KE-6C	\$1,000.00	\$0.00	\$1,000.00	The Contractor completed this performance measure according to the established criteria.
PM-41-02-2c	9/30/2011	Complete remediation of 116-KE-6D	\$1,000.00	\$0.00	\$1,000.00	The Contractor completed this performance measure according to the established criteria.
PM-41-02-2c	9/30/2011	Complete remediation of 116-KE-2	\$1,000.00	\$0.00	\$1,000.00	The Contractor completed this performance measure according to the established criteria.
PM-41-02-2c	9/30/2011	Complete remediation of 120-KW-3	\$1,000.00	\$0.00	\$1,000.00	The Contractor completed this performance measure according to the established criteria.
PM-41-02-2c	9/30/2011	Complete remediation of 120-KW-4	\$1,000.00	\$0.00	\$1,000.00	The Contractor completed this performance measure according to the established criteria.
PM-41-02-2c	9/30/2011	Complete remediation of 120-KW-5	\$1,000.00	\$0.00	\$1,000.00	The Contractor completed this performance measure according to the established criteria.
PM-41-02-2c	9/30/2011	Complete remediation of 120-KW-7	\$1,000.00	\$0.00	\$1,000.00	The Contractor completed this performance measure according to the established criteria.
PM-41-02-2c	9/30/2011	Complete remediation of 130-KE-1	\$1,000.00	\$0.00	\$1,000.00	The Contractor completed this performance measure according to the established criteria.
PM-41-02-2c	9/30/2011	Complete remediation of 132-KE-1	\$1,000.00	\$0.00	\$1,000.00	The Contractor completed this performance measure according to the established criteria.
PM-41-02-2d	9/30/2011	Complete all waste sites in Performance Objective 2c	\$750,000.00	\$0.00	\$750,000.00	The Contractor completed this performance measure according to the established criteria.
PM-41-02-3		Complete K West Basin debris removal and spent nuclear fuel/scrap free inspection and determination.				

FY 2011 ARRA Fee Reconciliation Table

Performance Measure Identifier	Maximum Fee Date	Objective	Recovery Fee Allocated	FY11 Allocated Fee Forfeited	FY11 Incremental (Earned) Allocated Fee RECOVERY	Completion Comments
PM-41-02.3a	9/30/2011	Complete removal of debris in the K West Basin.	\$102,500.00	\$0.00	\$102,500.00	The Contractor completed this performance measure according to the established criteria.
PM-41-02.3b	9/30/2011	Complete vacuuming of floor sludge in the K West Basin into Engineered Container 210.	\$75,000.00	\$0.00	\$75,000.00	The Contractor completed this performance measure according to the established criteria.
PM-41-02.3c	9/30/2011	Determine K West Basin is spent nuclear fuel/fuel scrap free (i.e. "fuel free").	\$250,000.00	\$0.00	\$250,000.00	The Contractor completed this performance measure according to the established criteria.
PM-41-02.3d	9/30/2011	Complete K West Basin debris removal and spent nuclear fuel/scrap free inspection and determination.	\$325,000.00	\$0.00	\$325,000.00	The Contractor completed this performance measure according to the established criteria.
PM-41-02.4		Complete KE Reactor Disposition				
PM-41-02.4a	9/30/2011	Complete Deactivation of the 105KE Reactor Building necessary to place the KE Reactor facility in an ISS/Reactor Disposition-ready condition.	\$1,000,000.00	\$50,000.00	\$950,000.00	\$50,000.00 of the allocated fee is not earned for performance quality issues at completion.
PM-41-02.4b	9/30/2011	Complete Characterization of the KE Reactor Core.	\$50,000.00	\$0.00	\$50,000.00	The Contractor completed this performance measure according to the established criteria.
PM-41-02.4c	9/30/2011	Complete both Performance Objective 4a and 4b.	\$300,000.00	\$0.00	\$300,000.00	The Contractor completed this performance measure according to the established criteria.
PM-41-02.5		Complete 100K Area Utility Reworks				
PM-41-02.5a	9/30/2011	Complete installation of an alternate 100K Area service water system.	\$500,000.00	\$500,000.00	\$0.00	The Contractor did not request fee for this activity.
PM-41-02.5b	9/30/2011	Complete preparations activities for electrical power isolation.	\$200,000.00	\$0.00	\$200,000.00	The Contractor completed this performance measure according to the established criteria.
PM-41-02.5c	9/30/2011	Complete installation of K West Basin HVAC system.	\$100,000.00	\$0.00	\$100,000.00	The Contractor completed this performance measure according to the established criteria.
PM-41-02.5d	9/30/2011	Complete Performance Objectives 5a, 5b, and 5c.	\$631,276.35	\$0.00	\$631,276.35	The Contractor completed this performance measure according to the established criteria.
RL-41 Sub Total			\$10,345,888.35	\$550,000.00	\$9,795,888.35	
TOTAL			\$59,245,602.40	\$1,111,680.50	\$58,133,921.90	



Department of Energy
Richland Operations Office
P.O. Box 550
Richland, Washington 99352

1305006
CHPRC Revd. 11/19/2013

14-PRO-0053

NOV 15 2013

Mr. J. C. Fulton, President
and Chief Executive Officer
CH2M HILL Plateau Remediation Company
Richland, Washington 99352

Dear Mr. Fulton:

CONTRACT NO. DE-AC06-08RL14788 – FISCAL YEAR (FY) 2012 BASE PERIOD FEE DETERMINATION

Pursuant to the requirements of paragraph (d) of Clause B.8, "Fee Determination and Payment," the U.S. Department of Energy Richland Operations Office (RL) provides the following determination for FY 2012 against the Performance Measures (PMs) contained in the Performance Evaluation and Measurement Plan, Section J, Attachment J.4.

FY 2012	Base Period Fee
Available Fee allocated to FY 2012* Performance Measures	\$10,399,033.60
Incremental Fee	\$4,490,000.00
Provisional Fee	\$5,909,033.60
Fee Forfeited	\$0.00

Per the table above, and as detailed in the enclosed fee reconciliation table, FY 2012 Available Fee allocated to PMs has been earned, as defined in paragraph (b)(2) of Clause B.7, "Fee Structure," in the amount of \$4,490,000 for Base Funded PMs. No Available Fee for FY 2012 Base Funded PMs was forfeited based upon the completion criteria stipulated for each measure.

As detailed in the enclosure, this Fee Determination includes payments for four incremental fee installments under two Groundwater PMs (Numbers PM-30-01.1c and PM-30-02.1c) that were scheduled for completion in FY 2013. These PMs for Groundwater Operable Units have four incremental installments corresponding to 1) submittal of the Remedial Investigation/Feasibility Study (RI/FS); 2) submittal of the Remedial Design/Remedial Action Work Plan (RD/RAWP); 3) completion of remediation remedy construction; and 4) start of full operations. The installments included in incremental (earned) fee in this Fee Determination are installments 3 and 4. The intent of this grouping of performance measures was to incentivize achievement of a final remedy. However, CHPRC has completed the construction work and started operations for the interim remedy that was specified in contract and was incentivized under installments 3 and 4. Therefore, pursuant to Clause B.8, paragraph (c), this fee determination provides 90 percent of the fee allocated to 3 and 4, as incremental (earned) fee with the remaining 10 percent payment held as provisional fee until the Contractor completes installments 1 and 2.

*In FY 2012, the contractor completed 4 performance measures scheduled for FY 2013. Accordingly, the fee allocation was moved forward and is included in this FY 2012 Fee Determination.


NOV 19 2012

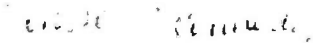
For the multi-year Plutonium Finishing Plant Disposition PM, Number PM-11-02, the following table provides the reconciliation of FY 2012 fee.

PM-11-02, Plutonium Finishing Plant Disposition	Base Period Fee
Allocated Available Fee	\$8,759,033.60
Provisional Fee Payment Installments Completed	\$3,235,288.46
Unpaid Provisional Fee	\$5,523,745.14
Provisional Fee Payment Installments Completed	\$3,235,288.46
Provisional Fee Payments Converted to Incremental Fee	\$3,000,000.00
Provisional Fee Payments not Converted	\$235,288.46
Provisional Fee Payments not Converted	\$235,288.46
Unpaid Provisional Fee	\$5,523,745.14
Provisional Fee Pending Final Completion	\$5,759,033.60

CHPRC completed provisional fee payment installments totaling \$3,235,288.46 of the \$8,759,033.60 allocated to this PM in FY 2012, leaving \$5,523,745.14 in unpaid provisional fee. Pursuant to the terms of the PM, the Fee Determining Official has converted \$3,000,000 of the \$3,235,288.46 completed provisional fee payment installments to incremental (earned) for FY 2012. The balance of the FY 2012 provisional fee totaling \$5,759,033.60 (\$235,288.46 paid and \$5,523,745.14 unpaid), is neither earned nor forfeited until the final fee determination for the PM, as defined in paragraph (b)(3) of Clause B.7.

If you have any questions, please contact us, or you may contact Ray Corey, Assistant Manager for River and Plateau, on (509) 373-9971.


Matt McCormick
Manager


Jenise C. Connerly
Contracting Officer

PRO:JCC

Enclosure: Fiscal Year 2012 Base Fee Reconciliation Table

cc w/encl:

M. V. Bang, CHPRC
V. M. Bogenberger, CHPRC
S. M. Bork, CHPRC
J. A. Ciucci, CHPRC
R. M. Millikin, CHPRC

FY 2012 Base Fee Reconciliation Table

Performance Measure Identifier	Maximum Fee Date	Minimum Fee Date (if applicable)	Objective	FY12 Allocated Fee BASE	FY12 Allocated Fee Forfeited	FY12 Incremental Fee (Earned) Allocated Fee BASE	FY12 Provisional Allocated Fee	Completion Comments
PM-11-02.1			Demolish Plutonium Finishing Plant (PFP) Complex Facilities to Slab-On-Grade and Stabilize the Site for Surveillance and Maintenance					
PM-11-02.1a	9/30/2014	9/30/2017	Complete demolition of PFP facilities to slab-on-grade and stabilize the site for surveillance and maintenance. Fee is reduced in a linear declining method to \$30,000,000 for each day to 9/30/2017, provided the option period is exercised	\$8,759,033.60	\$0.00	\$9,000,000.00	\$5,759,033.60	Allocated fee of \$5,759,033.60 remains as Provisional Fee, as defined in paragraph (b)(3) of Clause 8.7, until the final fee determination for this measure.
			Any portion of Provisional Fee, as defined by Clause 8.7, Fee Structure, paragraph (b)(3), may become earned through a final fee determination as defined by Clause 8.8, Fee Determination and Payment, paragraph (d). Conversion of fee from Provisional to earned is at the unilateral discretion of the Fee Determining Official. On an annual basis no more than \$3,000,000 in Provisional Fee may be converted to earned fee at the final fee determination, as defined by Clause 8.8, Fee Determination and Payment, paragraph (d). Allocated Available Fee not earned at the end of the multi-year performance period is unavailable in accordance with Clause 8.7, Fee Structure, paragraph (b)(2).					
RL-13 Sub Total				\$8,759,033.60	\$0.00	\$9,000,000.00	\$5,759,033.60	
PM-13-04.1			Waste Treatment and Disposal					
PM-13-04.1c (1st Increment)	9/30/2012	N/A	Treat and dispose of contact-handled, small container mixed low-level and low-level waste. For waste generated after June 30, 2009, dispose waste in accordance with the requirements of DOE M 435.1-1, Radioactive Waste Management Manual (FY 12).	\$50,000.00	\$0.00	\$50,000.00	\$0.00	The Contractor completed this performance measure according to the established criteria.
PM-13-04.1d (1st Increment)	9/30/2012	N/A	Treat and dispose of remote-handled mixed/low-level waste and large-container and mixed/low-level waste. For waste generated after June 30, 2009, dispose waste in accordance with the requirements of DOE M 435.1-1, Radioactive Waste Management Manual (FY 12).	\$50,000.00	\$0.00	\$50,000.00	\$0.00	The Contractor completed this performance measure according to the established criteria.
RL-13 Sub Total				\$100,000.00	\$0.00	\$100,000.00	\$0.00	
PM-30-01.1			Groundwater restoration in the 100-HR-3 Operable Unit (OU) (100-H, 100-D, and Horn Area)					
PM-30-01.1c (complete construction)	9/30/2013	N/A	Implement Final 100-HR-3 OU Remedy. Complete construction of final remedy per approved RO/RA Work Plan E166	\$250,000.00	\$0.00	\$225,000.00	\$25,000.00	Although the final remedy is yet to be determined through the regulatory process, the Contractor completed the scope of the final remedy that was contained in the contract specification. Therefore, the Contractor will earn 90% of the fee allocated to this performance measure. Pursuant to Clause 8.8, Fee Determination and Payment, paragraph (e), the remaining 10% of the allocated available fee will be held as a provisional payment until the Contractor completes all of the actions necessary to enable the Lead Regulatory Agency to issue the Record of Decision.

FY 2012 Base Fee Reconciliation Table

Performance Measure Identifier	Maximum Fee Date	Minimum Fee Date (if applicable)	Objective	FY12 Allocated Fee BASE	FY12 Allocated Fee Forfeited	FY12 Incremental (Earned) Fee BASE	FY12 Provisional Allocated Fee	Completion Comments
PM-30-01.1c (full operations per final ROD)	9/30/2013	N/A	Implement Final 100-KR-3 OU Remedy. Submit documentation verifying deployment and start of full operations of the 100-KR-3 Operable Unit final remedial action per the final Record of Decision and Remedial Action/Remedial Design Work Plan requirements.	\$500,000.00	\$0.00	\$450,000.00	\$50,000.00	Although the final remedy is yet to be determined through the regulatory process, the Contractor completed the scope of the final remedy that was contained in the contract specification. Therefore, the Contractor will earn 90% of the fee allocated to this performance measure. Pursuant to Clause B.8, Fee Determination and Payment, paragraph (e), the remaining 10% of the allocated available fee will be held as a provisional payment until the Contractor completes all of the actions necessary to enable the Lead Regulatory Agency to issue the Record of Decision.
PM-30-02.1			Groundwater Restoration in the 100-KR-4 Operable Unit					
PM-30-02.1c (complete construction)	9/30/2013	N/A	Implement Final 100-KR-4 OU Remedy. Complete construction of final remedy per approved ROD/RA Work Plan.	\$250,000.00	\$0.00	\$225,000.00	\$25,000.00	Although the final remedy is yet to be determined through the regulatory process, the Contractor completed the scope of the final remedy that was contained in the contract specification. Therefore, the Contractor will earn 90% of the fee allocated to this performance measure. Pursuant to Clause B.8, Fee Determination and Payment, paragraph (e), the remaining 10% of the allocated available fee will be held as a provisional payment until the Contractor completes all of the actions necessary to enable the Lead Regulatory Agency to issue the Record of Decision.
PM-30-02.1c (full operations per final ROD)	9/30/2013	N/A	Implement Final 100-KR-4 OU Remedy. Submit documentation verifying deployment and start of full operations of the 100-KR-4 Operable Unit final remedial action per the final Record of Decision and Remedial Action/Remedial Design Work Plan requirements.	\$500,000.00	\$0.00	\$450,000.00	\$50,000.00	Although the final remedy is yet to be determined through the regulatory process, the Contractor completed the scope of the final remedy that was contained in the contract specification. Therefore, the Contractor will earn 90% of the fee allocated to this performance measure. Pursuant to Clause B.8, Fee Determination and Payment, paragraph (e), the remaining 10% of the allocated available fee will be held as a provisional payment until the Contractor completes all of the actions necessary to enable the Lead Regulatory Agency to issue the Record of Decision.
PM-30-04.1			Groundwater Restoration in the 300-FF-5 Operable Unit					
PM-30-04.1b (Draft A R/F/S)	9/30/2013	N/A	Implement Final 300-FF-5 Remedy. Issue the R/F/S Report Draft A for submittal to regulators.	\$40,000.00	\$0.00	\$40,000.00	\$0.00	The Contractor completed this performance measure according to the established criteria.
RI-30 Sub Total				\$1,540,000.00	\$0.00	\$1,390,000.00	\$150,000.00	
TOTAL				\$10,399,033.60	\$0.00	\$4,490,000.00	\$5,909,033.60	

ITEM 2



CH2M HILL
Plateau Remediation Company
PO Box 1600
Richland, WA
99352

December 22, 2014

CHPRC-1405263

Mr. J. J. Short, Contracting Officer
U.S. Department of Energy
Richland Operations Office
Post Office Box 550
Richland, Washington 99352

Dear Mr. Short:

CONTRACT NUMBER DE-AC06-08RL14788 – PERFORMANCE MEASURE
COMPLETION REQUEST FOR CONTRACTING OFFICER ACCEPTANCE PER PRC
CLAUSE B.8(C) – RL-0012, FISCAL YEAR 2015, PM-12-5 ANNEX CONSTRUCTION
PART A

Reference: Contract Number DE-AC06-08RL14788 – Modification 362, 1404240,
dated September 29, 2014.

The purpose of this letter is to transmit performance measure (PM) completion documentation
for Contracting Officer acceptance in accordance with PRC Clause B.8(c).

The referenced contract modification incorporated Performance Measures for fiscal year 2015 in
PRC Section J, Attachment J.4, "*Performance Evaluation and Measurement Plan*." CHPRC is
submitting the attached completion documentation for the following completed Performance
Measure:

- PM-12-5, Annex Construction Part A (\$500,000)

CHPRC requests that RL complete the technical review of completion and provide the RL
Contracting Officer validation for the submitted completion documentation. Please return the
Performance Measure Completion Notice (PMCN) form in Attachment 1, signed off by the RL
technical reviewer and RL Contracting Officer, to CHPRC for our records to document RL
validation of completion.

Mr. J. J. Short
Page 2
December 22, 2014

CHPRC-1405263

Technical questions should be directed to R. M. Millikin at 373-5892, and contractual questions should be directed to K. K. Dickerson at 372-0177.

Sincerely,

John A. Ciucci
President and
Chief Executive Officer

swb/chp

Attachments 5

RL - C. M. Jacobsen
S. A. Sieracki
B. S. Valadez

Electronically Approved by:



UserName: Ciucci, John (h5427583)

Title: President and Chief Executive Officer

Date: Monday, 22 December 2014, 02:24 PM Pacific Time

Meaning: Sign as John A. Ciucci

=====

ATTACHMENT I

CHPRC-1405263
CONTRACT NUMBER DE-AC06-08RL14788

**FISCAL YEAR 2015 PERFORMANCE MEASURE COMPLETION NOTICE
SLUDGE TREATMENT PROJECT ANNEX CONSTRUCTION – BUILDING SHELL
(PART A)**

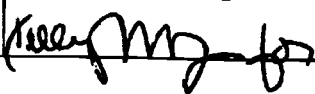
Consisting of 2 pages,
including this cover page

Plateau Remediation Contract

Performance Measure: PM-12-5
 Modification No.: 362 Date: 9/29/2014

FY 2015 Performance Measure Completion Notice

SECTION I. SUBMISSION INFORMATION

Maximum available incremental incentive fee for this measure:	\$500,000.00	
Name & Telephone L. T. Blackford, 373-1713	Signature 	Date Signed 12/12/14

SECTION II. REQUIREMENT

Description of actual milestone: Performance Objective/Measure: <i>Sludge Treatment Project Annex Construction - building shell (Part A)</i> Completion Criteria: <i>Complete Building Shell no later than 3/31/2015</i>
--

SECTION III. RESULTS

Brief description of actual accomplishments versus milestone: <i>The Building Shell was completed October 21, 2014.</i>
--

SECTION IV. EARNINGS CALCULATION

Based on the results stated above, calculate the fee earned using the Earning Schedule from the Performance Measure:	\$500,000.00
--	--------------

SECTION V. DOCUMENTATION

List and attach the completion documents identified in the Performance Measure. Completion Criteria: 1. K-Annex PBI Components and Shell Completion Criteria, CHPRC-1405263 Attachment 2. 2. KW Modified Annex Definition of Shell Complete (PI) graphic, CHPRC-1405263 Attachment 3. 3. Architectural Walkdown - November 3, 2014 KW Annex - Architectural Shell Completion, CHPRC-1405263 Attachment 4. 4. Ten construction photos showing the Annex Shell complete, CHPRC-1405263 Attachment 5.

SECTION VI. CHPRC REPRESENTATIVE

Name & Telephone R. M. Millikin, VP PC&PI, 373-5892	Signature 	Date Signed 12/17/14
--	--	-------------------------

SECTION VII. RICHLAND OPERATIONS OFFICE TECHNICAL REVIEW

<input type="checkbox"/> I have personally validated that: all work was completed as stated, attachments to this report provide adequate completion Documentation and the fee calculations are correct.		
<input type="checkbox"/> I have found that all work was not completed as stated, documentation is inadequate, or the fee calculations are incorrect. The attached correspondence, letter _____, provides justification for this conclusion and recommends further actions, if any.		
Name & Title of RL Technical Review	Signature	Date Signed

SECTION VIII. RL CONTRACTING OFFICER VALIDATION

By signing below, the RL Contracting Officer validates the performance claimed by this Performance Expectation Completion Notice.		
Name & Title of RL Contracting Officer J. J. Short, RL Contracting Officer	Signature	Date Signed

ATTACHMENT 2

**CHPRC-1405263
CONTRACT NUMBER DE-AC06-08RL14788**

K-ANNEX PBI COMPONENTS AND SHELL COMPLETION CRITERIA

Consisting of 2 pages,
including this cover page

K-Annex PBI Components and Shell Completion Criteria

The following is the definition of incremental components that support shell completion:

- Place building foundation, high bay walls and internal building concrete floors and internal building equipment pads. Does not include other extraneous site concrete pads or walk ways, hose in hose chase interior lid, or exterior concrete hose in hose chase, truck scales, etc.
- Install structural steel to allow the wall panel installation to proceed. Does not include non-structural components such as catwalks, stairways, vertical/ mezzanine shielding, or crane rails.
- Place concrete roof structure. Does not include placement of EPDM roofing material, roof flashing and trim or related finish components.
- Culmination of above items with placement of exterior wall panels constitutes Shell completion. Shell completion does not include exterior man doors or overhead loading bay door, or final trim.
- Open Punchlist items associated with the above shell components are expected.

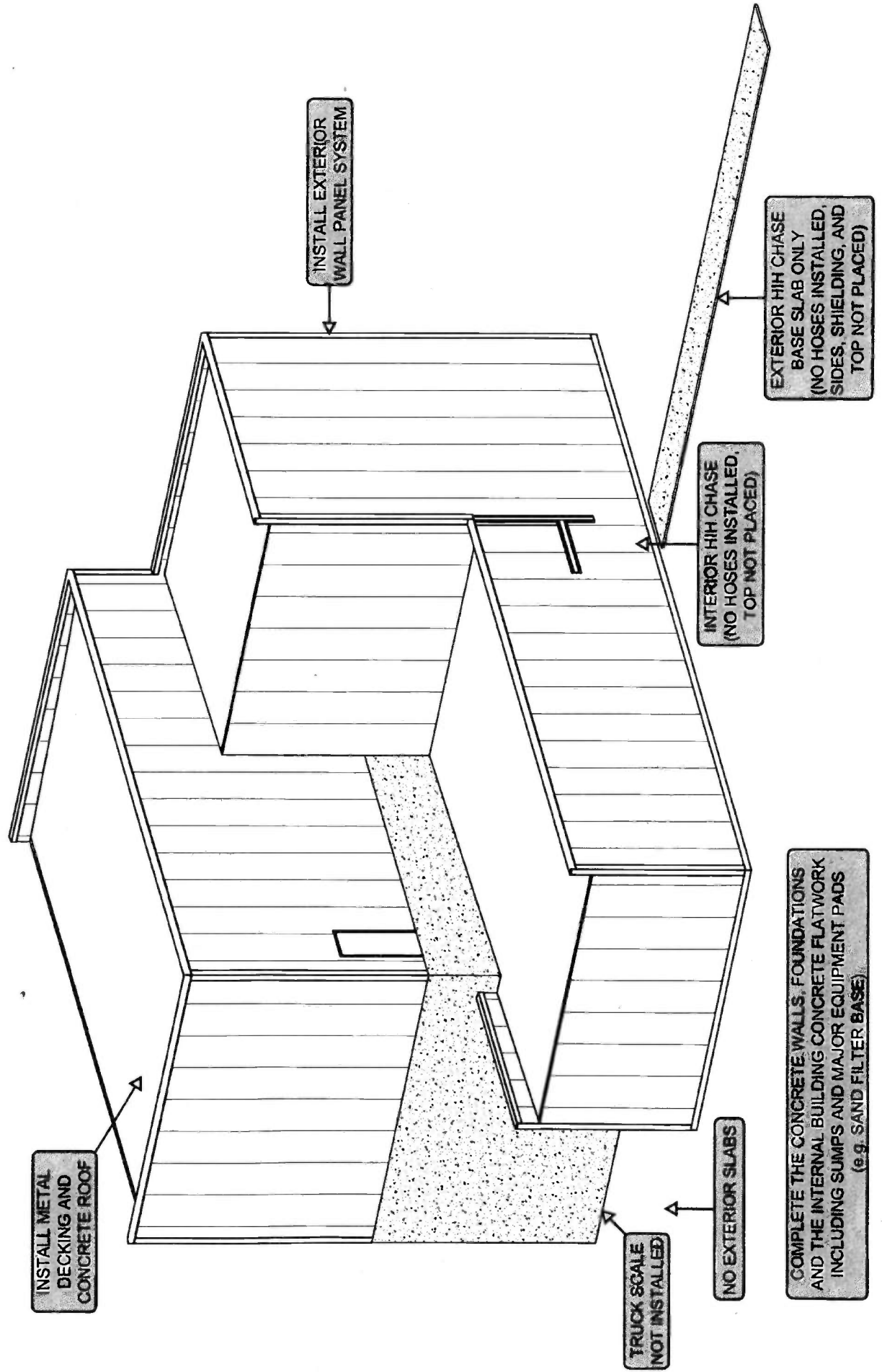
ATTACHMENT 3

CHPRC-1405263
CONTRACT NUMBER DE-AC06-08RL14788

**KW MODIFIED ANNEX
DEFINITION OF SHELL COMPLETE (PI)**

Consisting of 2 pages,
including this cover page

KW MODIFIED ANNEX DEFINITION OF SHELL COMPLETE (PI)



ATTACHMENT 4

CHPRC-1405263
CONTRACT NUMBER DE-AC06-08RL14788

**ARCHITECTURAL WALKDOWN NOV-3-2014
KW ANNEX – ARCHITECTURAL SHELL COMPLETION**

Consisting of 2 pages,
including this cover page

**ARCHITECTURAL WALKDOWN – Nov-3-2014
KW ANNEX – ARCHITECTURAL SHELL COMPLETION**

The KW-Annex Construction Site was walked down to observe the overall progress of the exterior envelope enclosure.

The following conditions were observed, and are being tracked on the Contractor's Action Item List. Below is a summary of Shell Completion Related Items.

Please note, that the Architectural envelope enclosure was substantially complete. The following list identifies remaining items related to Shell Completion. As noted below, they are minor in nature:

MISCELLANEOUS CLEAN-UP AND REPAIRS:

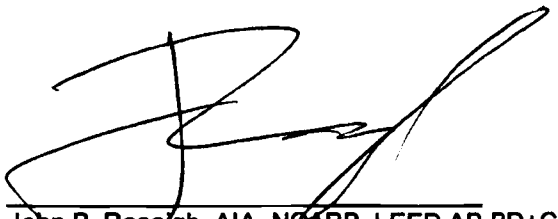
General clean-up (i.e., removal of chalk lines, excess glue, debris in the gutters), trade damage repairs (i.e., scratches and dents) are the responsibility of the General Contractor. These items will be in the appropriate construction sequence to the effort and minimize the associated cost.

SOUTH SIDE: (Note: Primary punchlist item is to install the permanent wall panels over the HIH chase. This activity is tracked in the CHPRC Field Execution Schedule (i.e., activity ID number FECKW60903).

1. Remove temporary panels and Hose-in-Hose and install final panels
2. Install final base flashing and sealant at panels on West side of Hose-in-Hose

WEST WALL:

3. Re-caulk vertical trim ~4' above low roof where separating, South West corner – Mid height wall
4. Repair scratch that runs full height of panel between North downspout and North West corner – Low wall



John P. Reseigh, AIA, NCARB, LEED AP BD+C
Design Architect
CH2M Hill

ATTACHMENT 5

CHPRC-1405263
CONTRACT NUMBER DE-AC06-08RL14788

BUILDING SHELL PHOTOGRAPHS

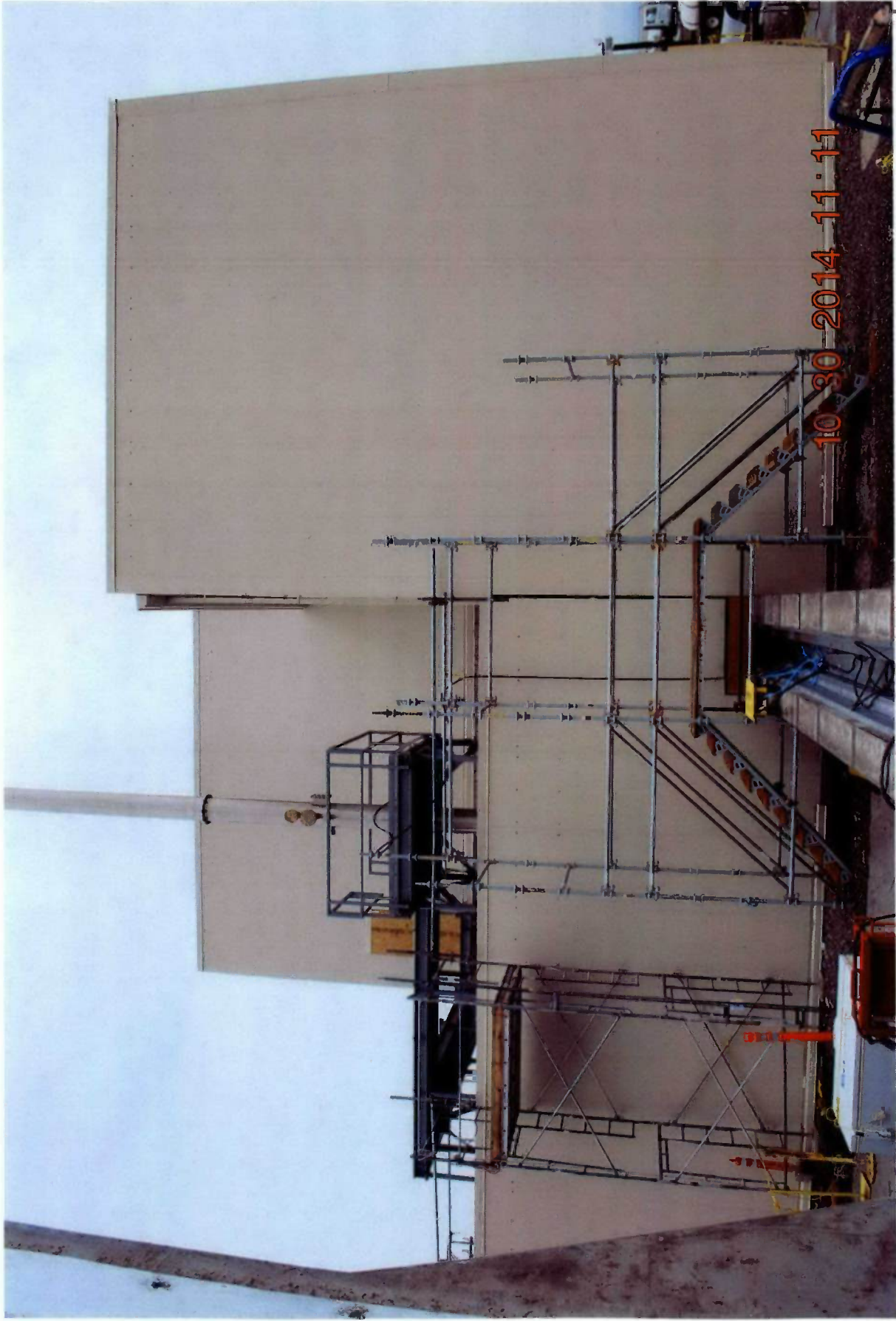
Consisting of 11 pages,
including this cover page









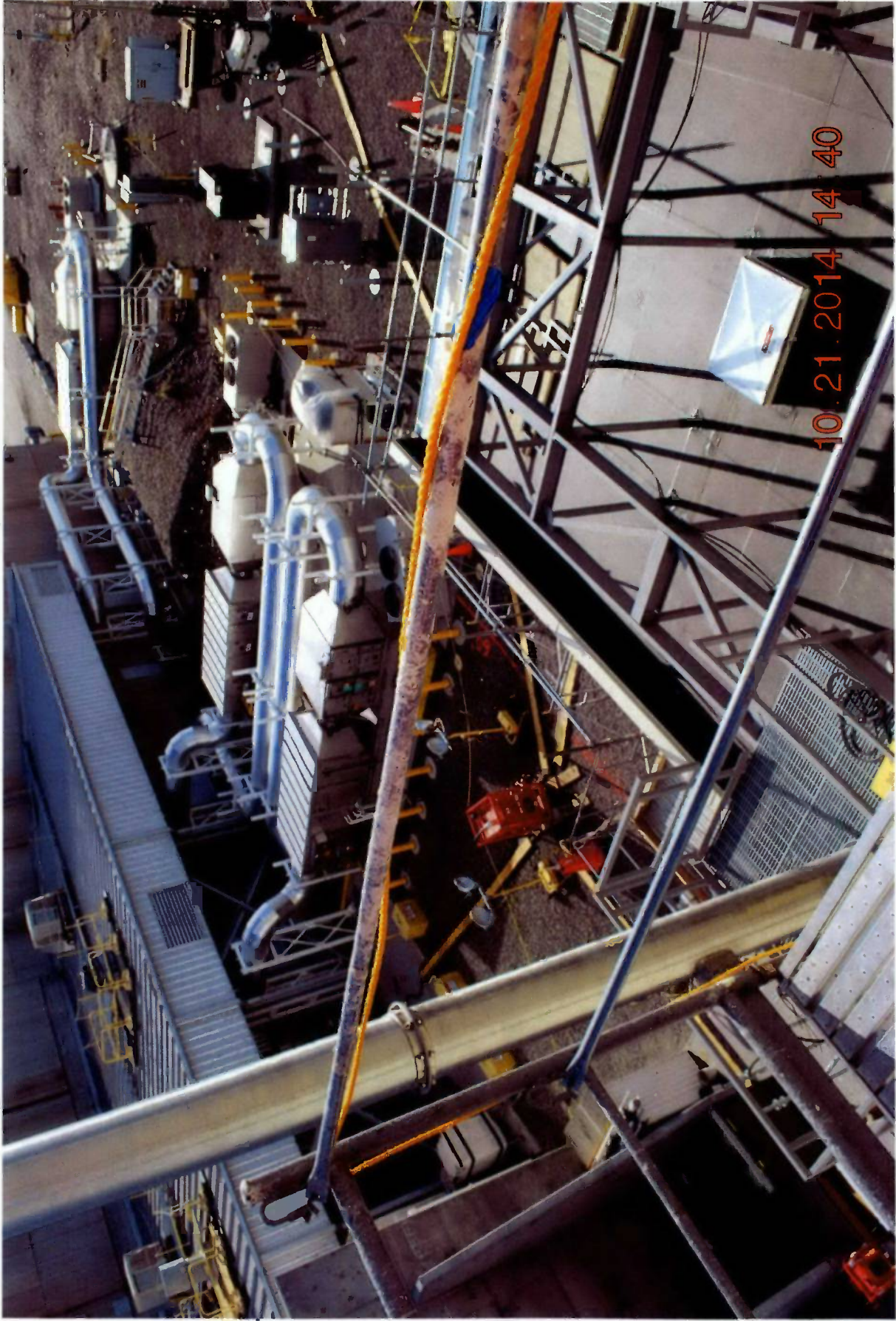








10.21.2014 14:45



10.21.2014 14:40





CH2M HILL
Plateau Remediation Company
PO Box 1600
Richland, WA
99352

April 9, 2015

CHPRC-1405263.1

Mr. J. J. Short, Contracting Officer
U.S. Department of Energy
Richland Operations Office
Post Office Box 550
Richland, Washington 99352

Dear Mr. Short:

CONTRACT NUMBER DE-AC06-08RL14788 – PERFORMANCE MEASURE
COMPLETION REQUEST FOR CONTRACTING OFFICER ACCEPTANCE PER PRC
CLAUSE B.8(C) – RL-0012, FISCAL YEAR 2015, PM-12-5 ANNEX CONSTRUCTION
PART A

- References:
1. Contract Number DE-AC06-08RL14788 – Modification 382, 1501042, dated February 19, 2015.
 2. Letter, J. A. Ciucci, CHPRC, to J. J. Short, RL, "Contract Number DE-AC06-08RL14788 – Performance Measure Completion Request for Contracting Officer Acceptance per PRC Clause B.8(c) – RL-0012, Fiscal Year 2015, PM-12-5 Annex Construction Part A," CHPRC-1405263, dated December 22, 2014.
 3. Contract Number DE-AC06-08RL14788 – Modification 362, 1404240, dated September 29, 2014.

The purpose of this letter is to transmit updated performance measure (PM) completion documentation for Contracting Officer acceptance in accordance with PRC Clause B.8(c). This documentation was previously submitted in Reference 2 based on the completion criteria of Modification 362 (Reference 3). Modification 382 (Reference 1) subsequently updated the completion criteria for the Performance Measure (PM), and the completion documentation has been updated to reflect the revised completion criteria language.

The PMs for fiscal year 2015 are listed in PRC Section J, Attachment J.4, "*Performance Evaluation and Measurement Plan*." CHPRC is submitting the attached completion documentation for the following completed PM:

Mr. J. J. Short
Page 2
April 9, 2015

CHPRC-1405263.1

- PM-12-5, Sludge Treatment Project Annex Construction – building shell (Part A) (\$500,000)

CHPRC requests that RL complete the technical review of completion and provide the RL Contracting Officer validation for the submitted completion documentation. Please return the Performance Measure Completion Notice (PMCN) form in Attachment 1, signed off by the RL technical reviewer and RL Contracting Officer, to CHPRC for our records to document RL validation of completion.

Technical questions should be directed to R. M. Millikin at 373-5892, and contractual questions should be directed to K. K. Dickerson at 372-0177.

Sincerely,

John A. Ciucci
President and
Chief Executive Officer

swb/chp

Attachments 5

RL - C. M. Jacobsen
S. A. Sieracki
B. S. Valadez

Electronically Approved by:



UserName: Ciucci, John (h5427583)

Title: President and Chief Executive Officer

Date: Thursday, 09 April 2015, 03:52 PM Pacific Time

Meaning: Sign as John A. Ciucci

=====

ATTACHMENT 1

CHPRC-1405263.1
CONTRACT NUMBER DE-AC06-08RL14788

**FISCAL YEAR 2015 PERFORMANCE MEASURE COMPLETION NOTICE
SLUDGE TREATMENT PROJECT ANNEX CONSTRUCTION – BUILDING SHELL
(PART A)**

Consisting of 2 pages,
including this cover page

Plateau Remediation Contract

Performance Measure: PM-12-5
 Modification No.: 362 Date: 9/29/2014

FY 2015 Performance Measure Completion Notice

SECTION I. SUBMISSION INFORMATION

Maximum available Incremental Incentive fee for this measure:		\$500,000.00
Name & Telephone L. T. Blackford, 373-1713 <i>Kelly Wooley for</i>	Signature <i>Kelly Wooley</i>	Date Signed 4/8/15 previously approved on 12/12/14. CHP

SECTION II. REQUIREMENT

Description of actual milestone: Performance Objective/Measure: <i>Sludge Treatment Project Annex Construction - building shell (Part A)</i>
Completion Criteria: <i>Complete Building Shell no later than 3/31/2015 with RL approved punch-list items remaining</i>

SECTION III. RESULTS

Brief description of actual accomplishments versus milestone: <i>The Building Shell was completed October 21, 2014.</i>
--

SECTION IV. EARNINGS CALCULATION

Based on the results stated above, calculate the fee earned using the Earning Schedule from the Performance Measure:	\$500,000.00
--	--------------

SECTION V. DOCUMENTATION

List and attach the completion documents identified in the Performance Measure. Completion Criteria: 1. K-Annex PBI Components and Shell Completion Criteria, CHPRC-1405263 Attachment 2. 2. KW Modified Annex Definition of Shell Complete (PI) graphic, CHPRC-1405263 Attachment 3. 3. Architectural Walkdown - November 3, 2014 KW Annex - Architectural Shell Completion, CHPRC-1405263 Attachment 4. 4. Ten construction photos showing the Annex Shell complete, CHPRC-1405263 Attachment 5.

SECTION VI. CHPRC REPRESENTATIVE

Name & Telephone R. M. Millikin, VP PC&PI, 373-5892	Signature <i>R. Millikin</i>	Date Signed 4/9/15
--	---------------------------------	-----------------------

SECTION VII. RICHLAND OPERATIONS OFFICE TECHNICAL REVIEW

<input type="checkbox"/> I have personally validated that: all work was completed as stated, attachments to this report provide adequate completion Documentation and the fee calculations are correct.		
<input type="checkbox"/> I have found that all work was not completed as stated, documentation is inadequate, or the fee calculations are incorrect. The attached correspondence, letter _____, provides justification for this conclusion and recommends further actions, if any.		
Name & Title of RL Technical Review	Signature	Date Signed

SECTION VIII. RL CONTRACTING OFFICER VALIDATION

By signing below, the RL Contracting Officer validates the performance claimed by this Performance Expectation Completion Notice.		
Name & Title of RL Contracting Officer J. J. Short, RL Contracting Officer	Signature	Date Signed

ATTACHMENT 2

CHPRC-1405263.1
CONTRACT NUMBER DE-AC06-08RL14788

K-ANNEX PBI COMPONENTS AND SHELL COMPLETION CRITERIA

Consisting of 2 pages,
including this cover page

K-Annex PBI Components and Shell Completion Criteria

The following is the definition of incremental components that support shell completion:

- Place building foundation, high bay walls and internal building concrete floors and internal building equipment pads. Does not include other extraneous site concrete pads or walk ways, hose in hose chase interior lid, or exterior concrete hose in hose chase, truck scales, etc.
- Install structural steel to allow the wall panel installation to proceed. Does not include non-structural components such as catwalks, stairways, vertical/ mezzanine shielding, or crane rails.
- Place concrete roof structure. Does not include placement of EPDM roofing material, roof flashing and trim or related finish components.
- Culmination of above items with placement of exterior wall panels constitutes Shell completion. Shell completion does not include exterior man doors or overhead loading bay door, or final trim.
- Open Punchlist items associated with the above shell components are expected.

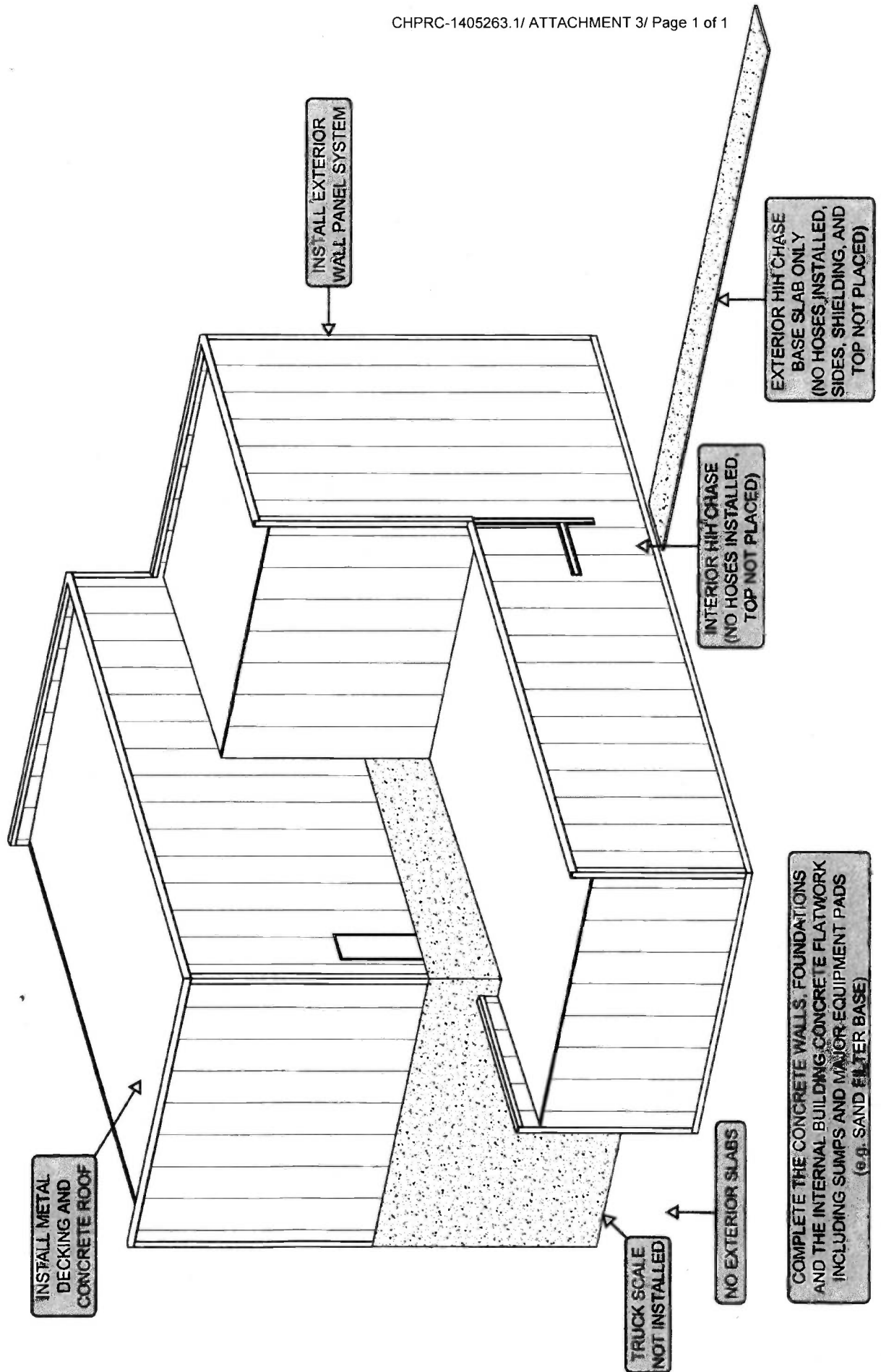
ATTACHMENT 3

CHPRC-1405263.1
CONTRACT NUMBER DE-AC06-08RL14788

**KW MODIFIED ANNEX
DEFINITION OF SHELL COMPLETE (PI)**

Consisting of 2 pages,
including this cover page

KW MODIFIED ANNEX DEFINITION OF SHELL COMPLETE (PI)



ATTACHMENT 4

CHPRC-1405263.1
CONTRACT NUMBER DE-AC06-08RL14788

**ARCHITECTURAL WALKDOWN NOV-3-2014
KW ANNEX – ARCHITECTURAL SHELL COMPLETION**

Consisting of 2 pages,
including this cover page

ARCHITECTURAL WALKDOWN – Nov-3-2014
KW ANNEX – ARCHITECTURAL SHELL COMPLETION

The KW-Annex Construction Site was walked down to observe the overall progress of the exterior envelope enclosure.

The following conditions were observed, and are being tracked on the Contractor's Action Item List. Below is a summary of Shell Completion Related Items.

Please note, that the Architectural envelope enclosure was substantially complete. The following list identifies remaining items related to Shell Completion. As noted below, they are minor in nature:

MISCELLANEOUS CLEAN-UP AND REPAIRS:

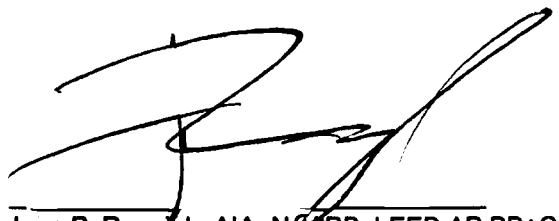
General clean-up (i.e., removal of chalk lines, excess glue, debris in the gutters), trade damage repairs (i.e., scratches and dents) are the responsibility of the General Contractor. These items will be in the appropriate construction sequence to the effort and minimize the associated cost.

SOUTH SIDE: (Note: Primary punchlist item is to install the permanent wall panels over the HIH chase. This activity is tracked in the CHPRC Field Execution Schedule (i.e., activity ID number FECKW60903).

1. Remove temporary panels and Hose-in-Hose and install final panels
2. Install final base flashing and sealant at panels on West side of Hose-in-Hose

WEST WALL:

3. Re-caulk vertical trim ~4' above low roof where separating, South West corner – Mid height wall
4. Repair scratch that runs full height of panel between North downspout and North West corner – Low wall



John P. Reseigh, AIA, NCARB, LEED AP BD+C
Design Architect
CH2M Hill

ATTACHMENT 5

CHPRC-1405263.1
CONTRACT NUMBER DE-AC06-08RL14788

BUILDING SHELL PHOTOGRAPHS

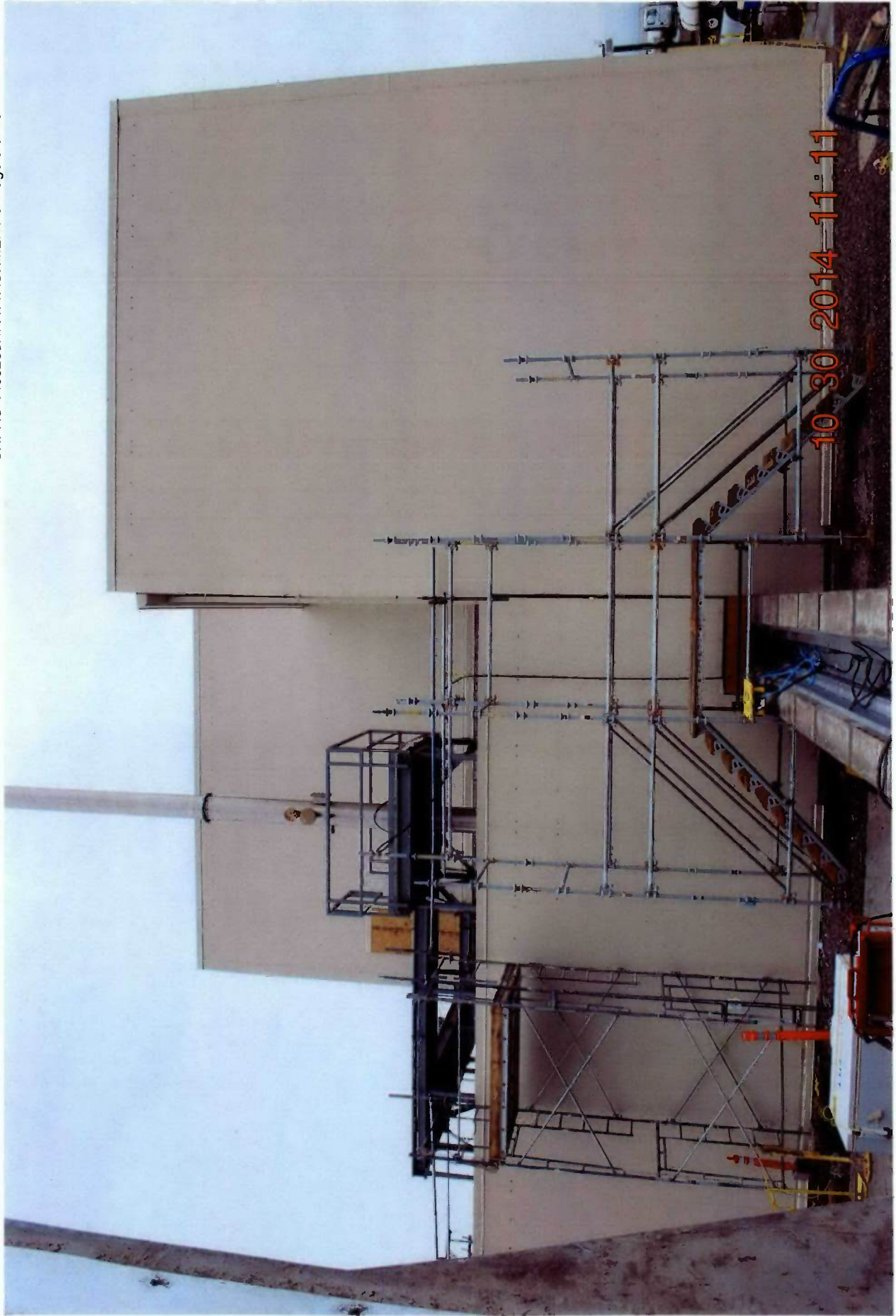
Consisting of 11 pages,
including this cover page









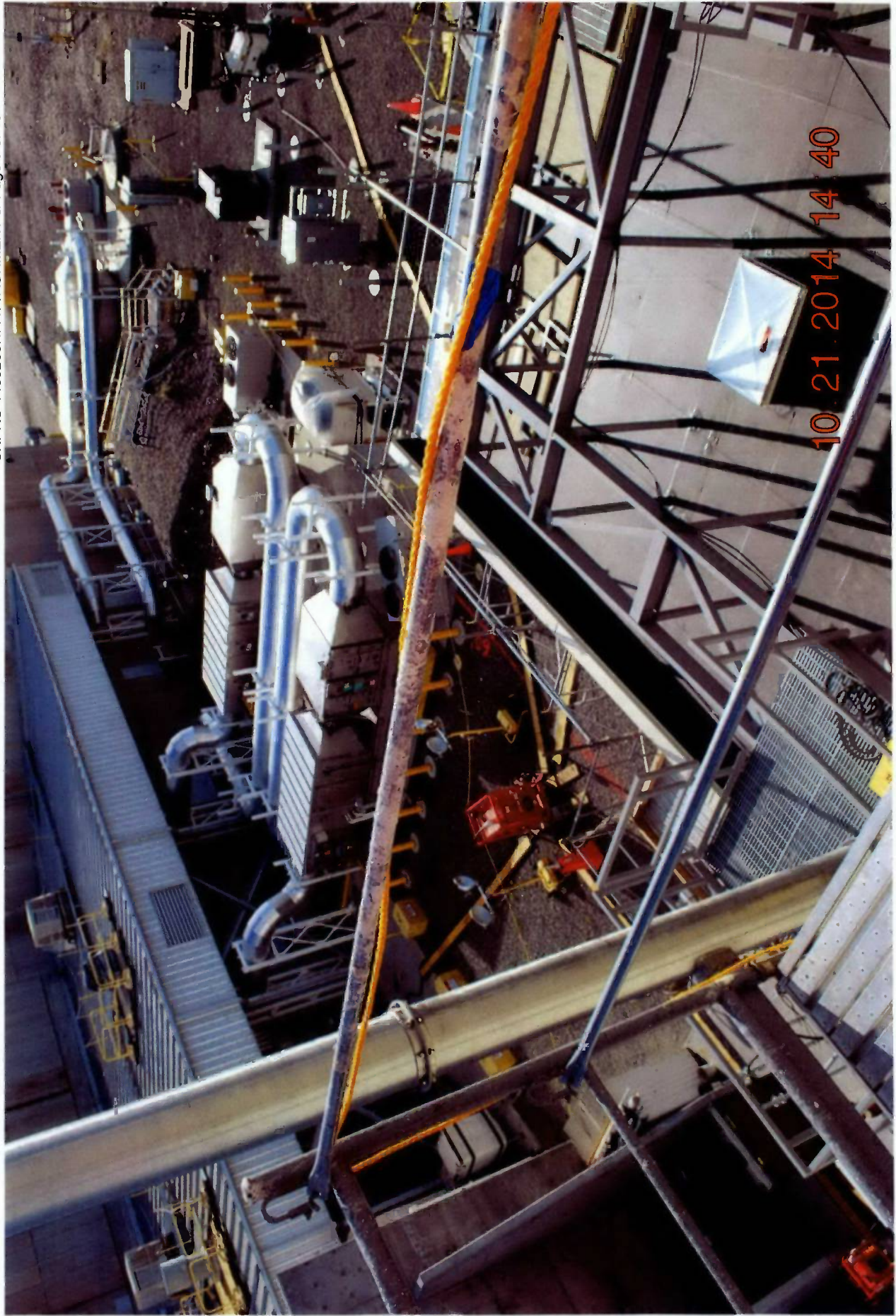








10.21.2014 14:45



10 21 2014 14 40



ITEM 3

Table B.4-1, Contract Cost and Contract Fee

Contract Period	Element	FY 2008					
Transition Period	Estimated Contract Cost	\$3,307,735					
Base Period		FY 2008	FY 2010	FY 2011	FY 2012	FY 2013	Total Base Period
CLIN 1	Estimated Contract Cost	\$264,907,169	\$184,150,760	\$199,658,737	\$191,649,688	\$182,616,818	\$1,042,983,272.09
CLIN 2	Estimated Contract Cost	\$64,388,719	\$45,606,756	\$26,441,959	\$68,039,035	\$53,219,749	\$257,686,218
CLIN 3	Estimated Contract Cost	\$93,042,127	\$88,062,385	\$96,403,918	\$66,781,356	\$129,232,811	\$473,522,598
CLIN 4	Estimated Contract Cost	\$0	\$0	\$0	\$0	\$0	\$0
CLIN 5	Estimated Contract Cost	\$69,188,987	\$77,325,292	\$104,808,485	\$83,428,750	\$34,028,971	\$368,781,486
Total Base Period	Estimated Contract Cost	\$491,527,003	\$405,145,182	\$427,313,099	\$409,898,830	\$409,099,450	\$2,142,983,574
	Available Fee	\$22,875,910	\$19,412,118	\$17,852,099	\$18,134,034	\$14,092,235	\$96,040,685
	Contract Price	\$514,402,913	\$424,557,310	\$445,165,198	\$428,032,863	\$423,191,684	\$2,239,024,258
CLIN 6	Estimated Contract Cost	\$158,581,307	\$554,872,119	\$574,791,707	\$18,789,227	\$0	\$1,307,044,360
Total Recovery Act	Estimated Contract Cost	\$158,581,307	\$554,872,119	\$574,791,707	\$18,789,227	\$0	\$1,307,044,360
	Available Fee	\$3,771,414	\$15,852,276	\$52,847,426	\$0	\$0	72,471,115
	Contract Price	\$162,352,721	\$570,724,395	\$627,639,132	\$18,789,227	\$0	\$1,379,515,475
Total Base Period Including Recovery Act	Estimated Contract Cost	\$650,118,310	\$960,017,310	\$1,002,104,807	\$428,688,057	\$409,099,450	\$3,450,027,934
	Available Fee	\$26,647,324	\$35,264,395	\$70,699,523	\$18,134,034	\$17,766,524	\$168,511,800
	Contract Price	\$676,765,634	\$995,281,705	\$1,072,804,330	\$446,822,090	\$426,865,973	\$3,618,539,733
Option Period		FY 2014	FY 2015	FY 2016	FY 2017	FY 2018	Total Option Period
CLIN 1	Estimated Contract Cost	\$202,364,551	\$208,977,091	\$206,668,583	\$204,178,870	\$183,303,856	\$1,005,482,752
CLIN 2	Estimated Contract Cost	\$54,888,220	\$47,340,956	\$18,594,618	\$0	\$0	\$120,823,794
CLIN 3	Estimated Contract Cost	\$153,346,238	\$157,256,552	\$164,671,093	\$107,063,429	\$125,920,071	\$708,257,383
CLIN 4	Estimated Contract Cost	\$0	\$0	\$6,100,299	\$18,821,546	\$974,485	\$25,696,340
CLIN 5	Estimated Contract Cost	\$33,815,783	\$36,397,542	\$46,807,853	\$18,610,813	\$18,964,074	\$154,595,875
Total Option Period	Estimated Contract Cost	\$444,404,093	\$449,402,147	\$442,565,052	\$348,474,858	\$328,162,296	\$2,014,866,143
	Available Fee	\$13,315,000	\$11,500,000	\$12,025,000	\$11,500,000	\$11,639,576	\$59,979,576
	Contract Price	\$457,719,093	\$460,902,147	\$454,590,052	\$359,974,858	\$340,801,872	\$2,074,845,719
Total: Transition, Base & Option Periods	Total Contract Cost	\$5,468,214,432					
	Total Available Fee	\$228,491,376					
	Total Contract Price	\$5,696,705,808					

PERFORMANCE MEASURE

PM-11-1

PLUTONIUM FINISHING PLANT (PFP) MULTI-YEAR PERFORMANCE MEASURE (Identified as PM-11-02.1A in the Base Period PEMP)

Introduction:

The base period Performance Evaluation Measurement Plans were published in multiple year formats, while this FY2015 PEMP is written for one year only. Accordingly, since the PFP incentive is effective during both the base and option periods of performance, it will be included in the PEMP for each fiscal year of the option period. This FY2015 PEMP does not change incentive no. PM-11-02.1A that was published in Mod 249 dated November 30, 2012, nor does it change the modification of provisional fee that was addressed in letter no. 13-AMRP-0227 dated June 24, 2013.

Note that RL allocated the available fee (\$51,057,421) across the first five years of the contract for convenience (see Section B, Table B.4-1). The fee is available until the incentive ends. Note that Mod 249 changed the maximum earning date to September 30, 2014.

Allocated Available Fee: \$51,057,421

Performance Measure Objective:

Demolish Plutonium Finishing Plant (PFP) Complex Facilities to Slab-On-Grade and Stabilize the Site for Surveillance and Maintenance.

Complete demolition of PFP facilities to slab-on-grade and stabilize the site for surveillance and maintenance. Fee is reduced in a linear declining method [from \$51,057,421] to \$30,000,000 for each day [from 9/30/14] to 9/30/2017, provided the option period is exercised.

Any portion of Provisional Fee, as defined by Clause B.7, Fee Structure, paragraph (b)(3), may become earned through a final fee determination as defined by Clause B.8, Fee Determination and Payment, paragraph (d). Conversion of fee from Provisional to earned is at the unilateral discretion of the Fee Determining Official. On an annual basis no more than \$3,000,000 in Provisional Fee may be converted to earned fee at the final fee determination, as defined by Clause B.8, Fee Determination and Payment, paragraph (d). Allocated Available Fee not earned at the end of the multi-year performance period is unavailable in accordance with Clause B.7, Fee Structure, paragraph (b)(2).

Completion Criteria: (PM-11-1)

- Complete execution of Alternative 4 in approved EECA DOE/RL/2005-13.
- Achieve the PFP Complex slab-on-grade end point criteria in HNF-22401.

- Handle, package, label, store, and ship waste (e.g., low-level, low-level mixed, TRU/TRU mixed wastes) out of the PFP facilities for treatment or disposal. Waste shipments completed in accordance with the Hanford waste shipping criteria, other waste site criteria, and in compliance with applicable state and federal regulations for treatment and disposal at an approved facility.
- Complete turnover of the PFP site for surveillance and maintenance.